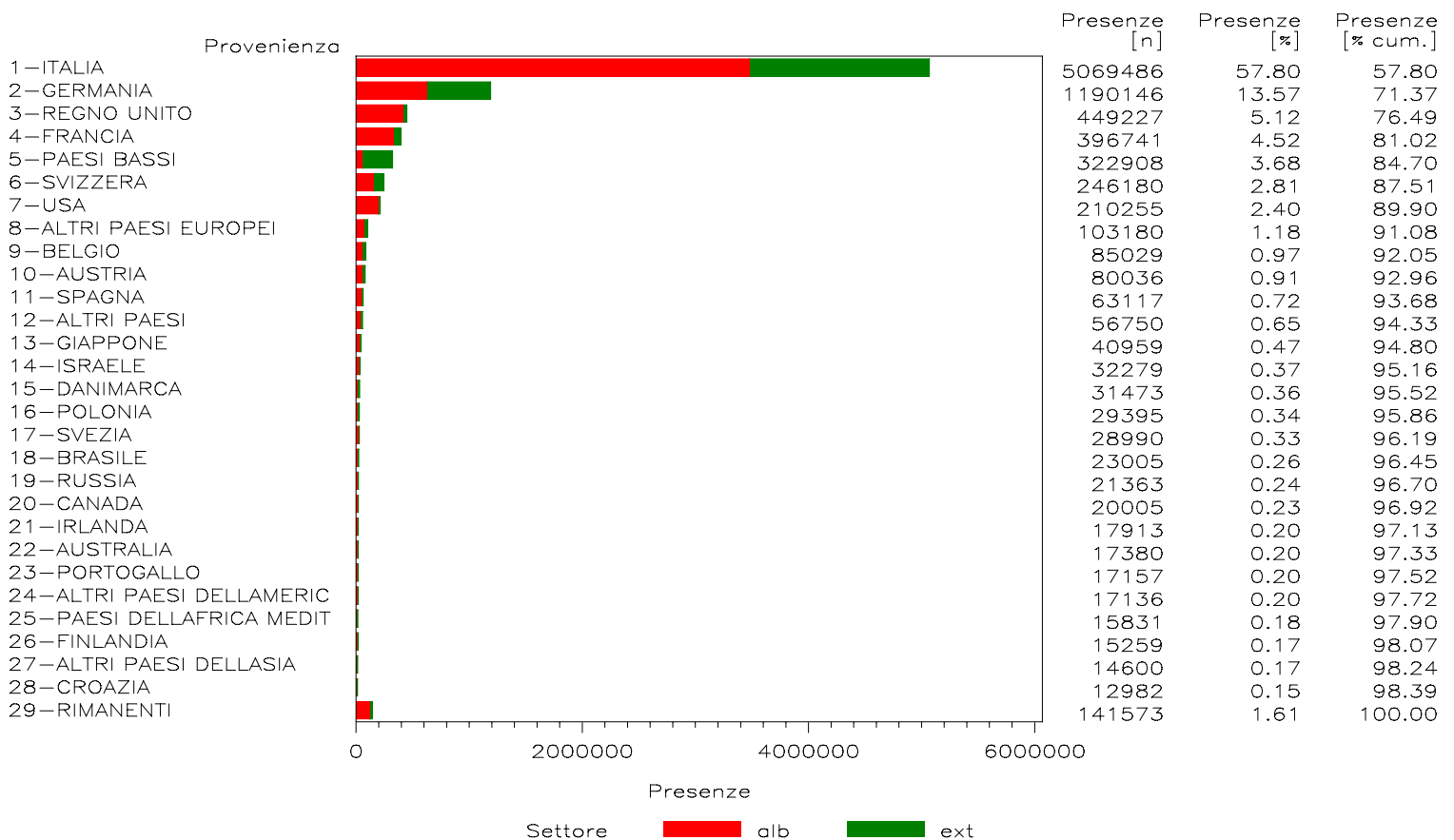
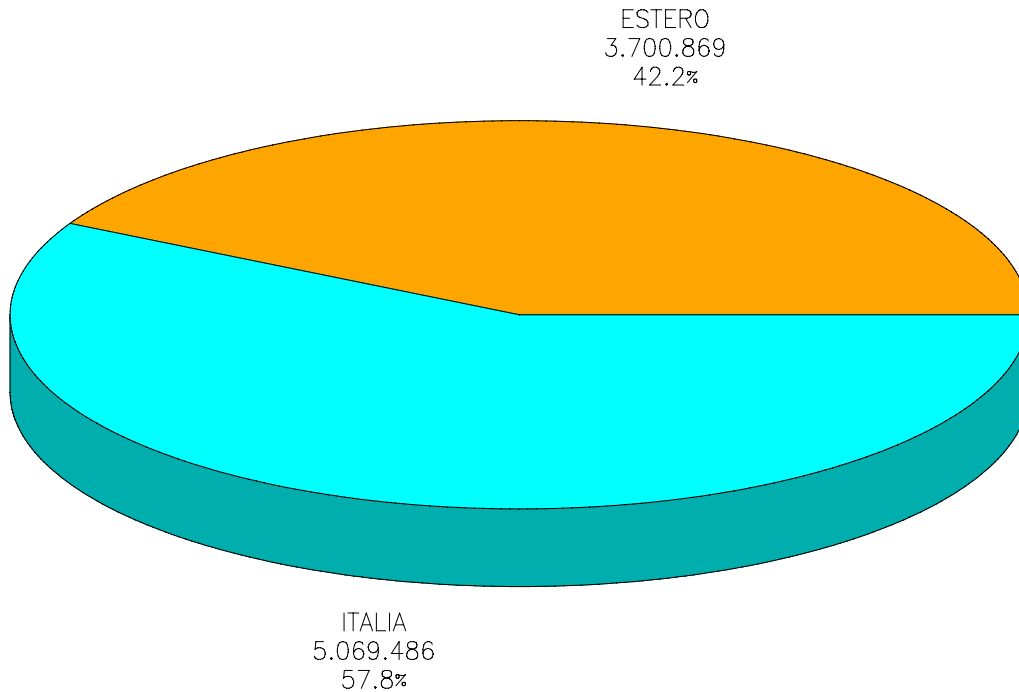


# REGIONE PIEMONTE

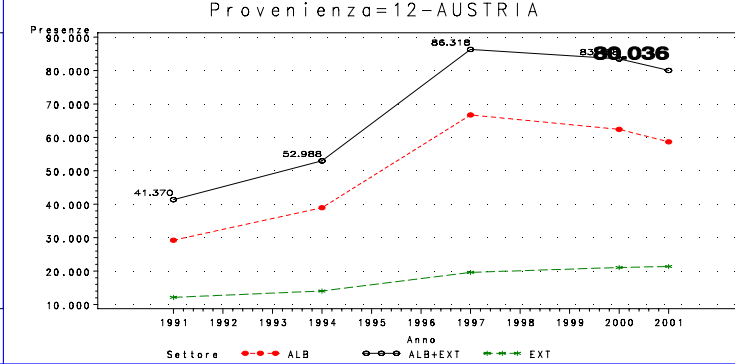
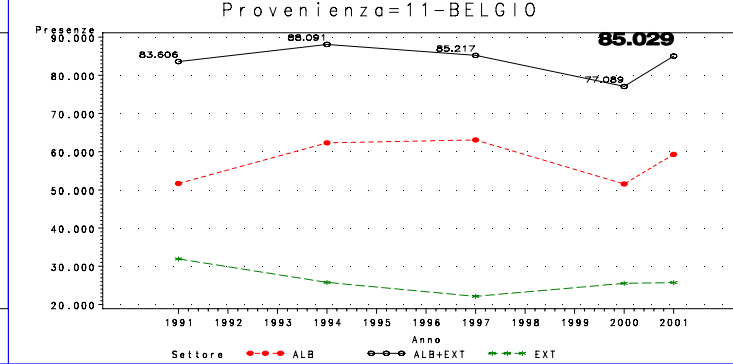
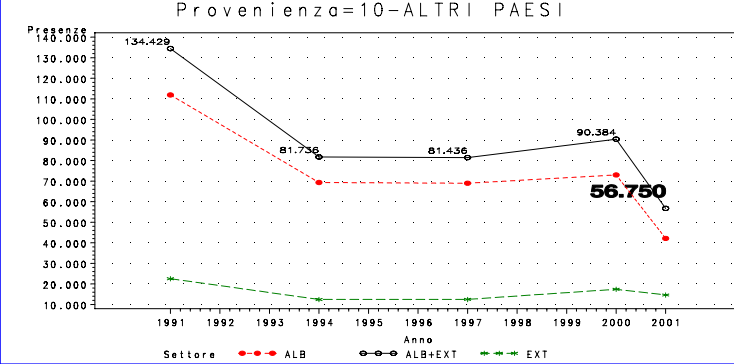
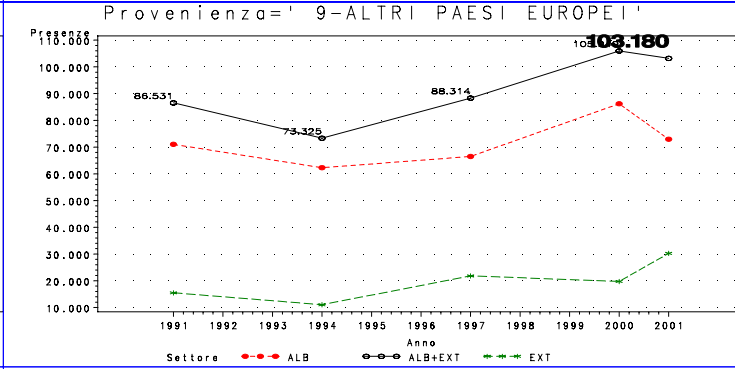
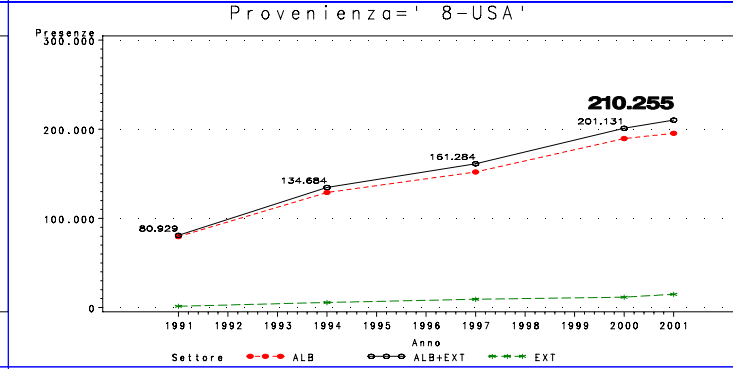
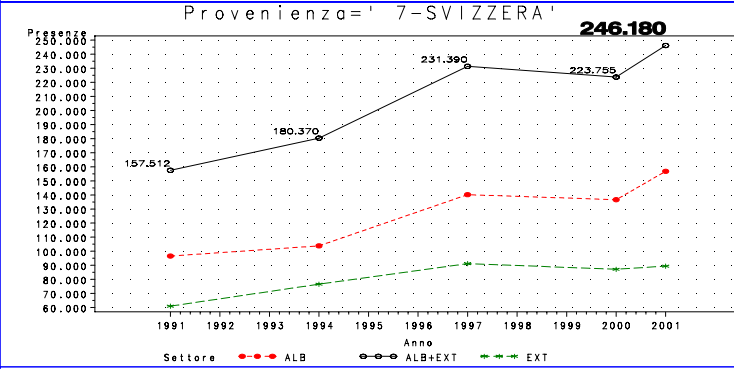
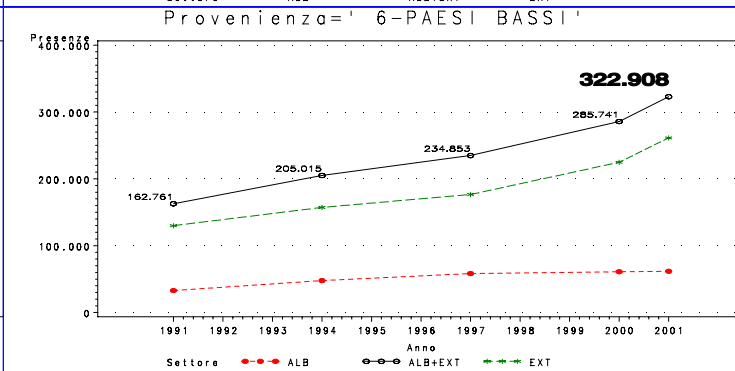
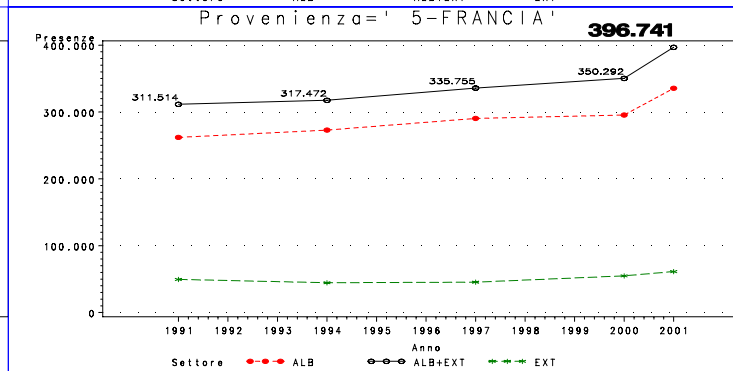
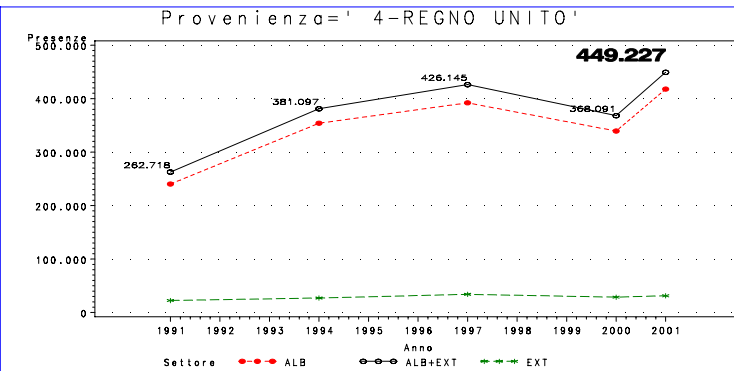
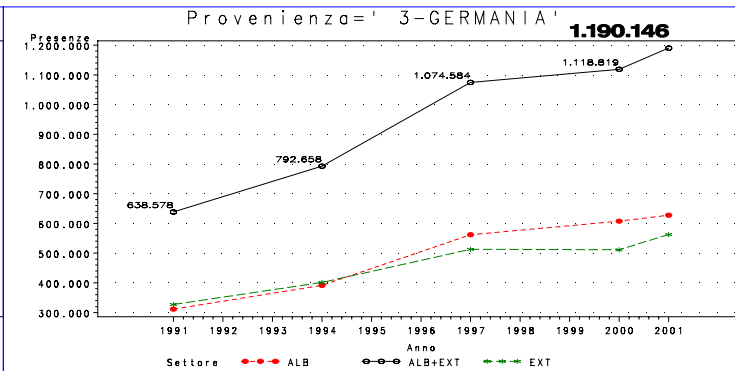
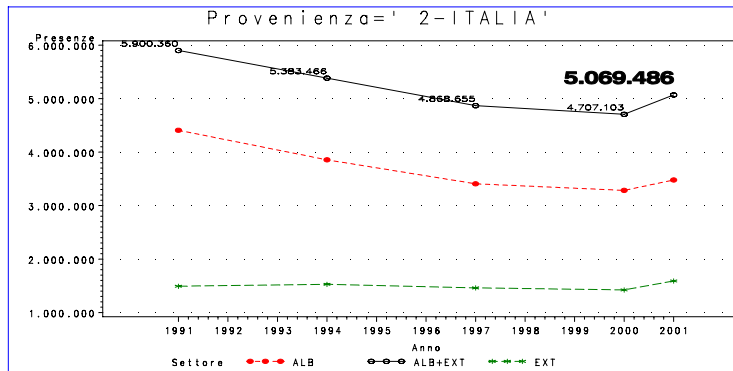
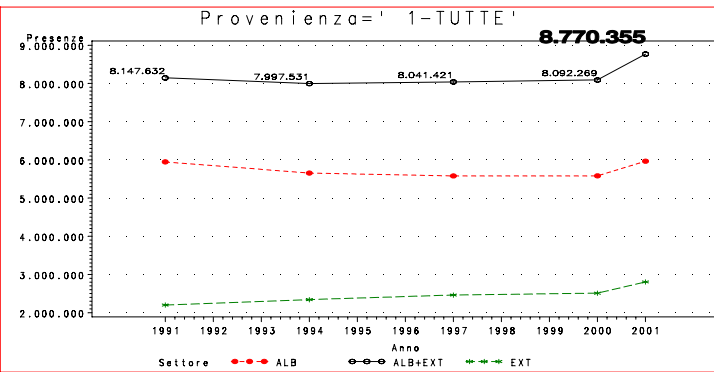
ANNO 2001

Presenze totali 2001: 8.770.355

Differenza Presenze rispetto al 2000: + 678.086 (+ 8.38 %)



# REGIONE PIEMONTE – Mercati di provenienza – Presenze

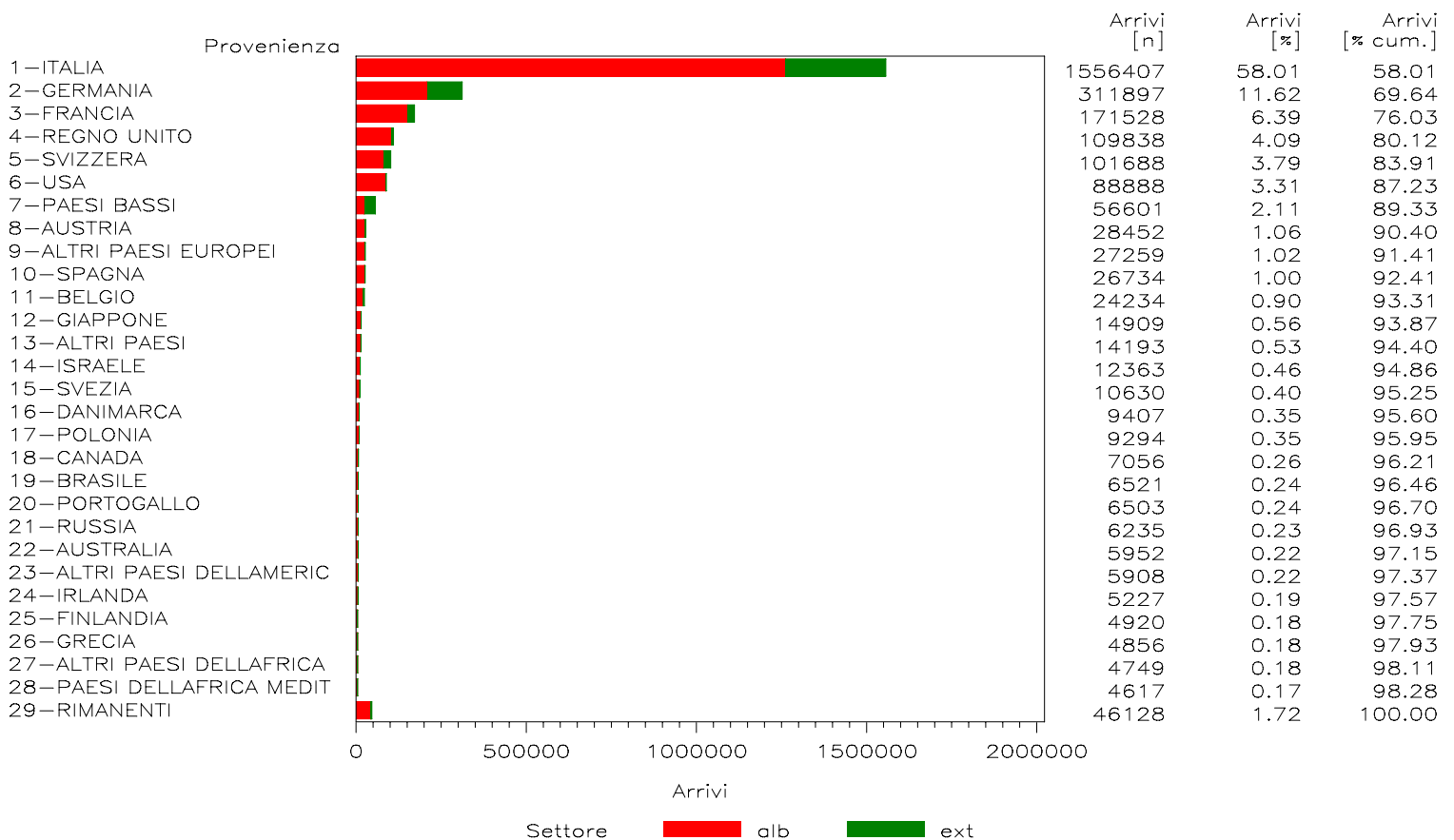
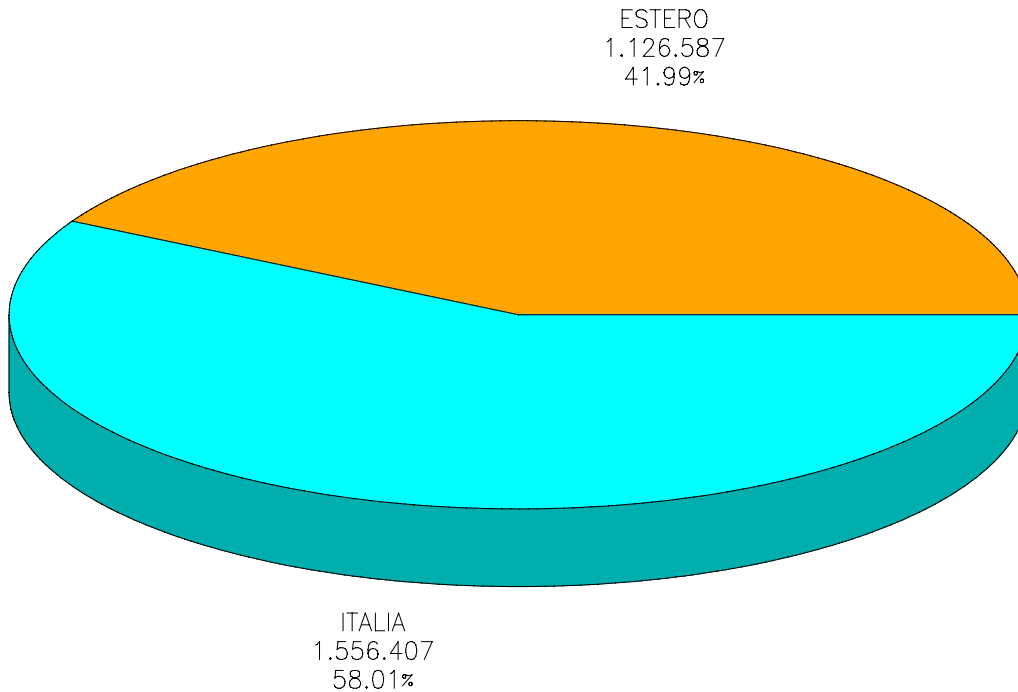


# REGIONE PIEMONTE

ANNO 2001

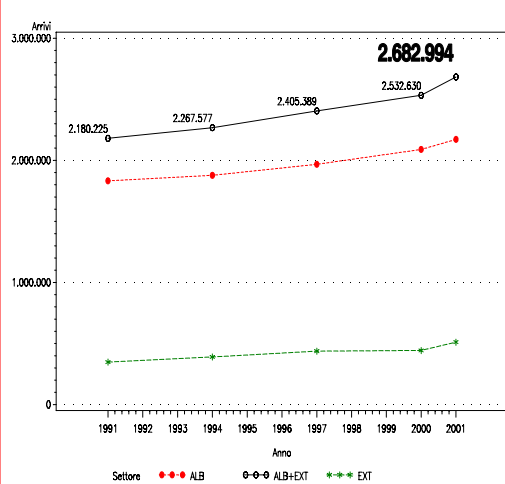
Arrivi totali 2001: 2.682.994

Differenza Arrivi rispetto al 2000: + 150.364 (+ 5.94 %)

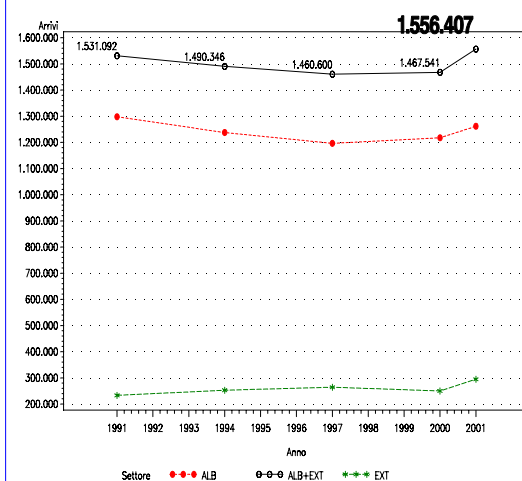


# REGIONE PIEMONTE – Mercati di provenienza – Arrivi

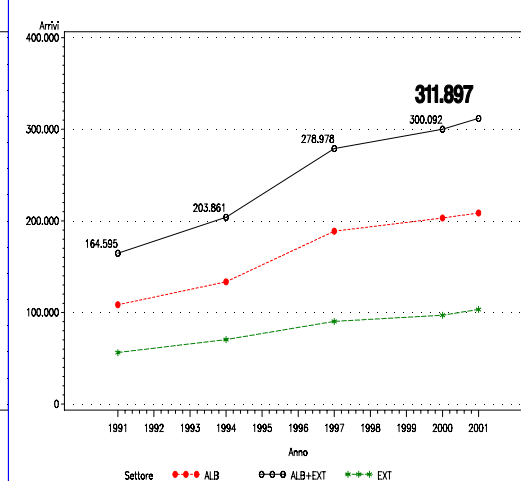
Provenienza=' 1-TUTTE'



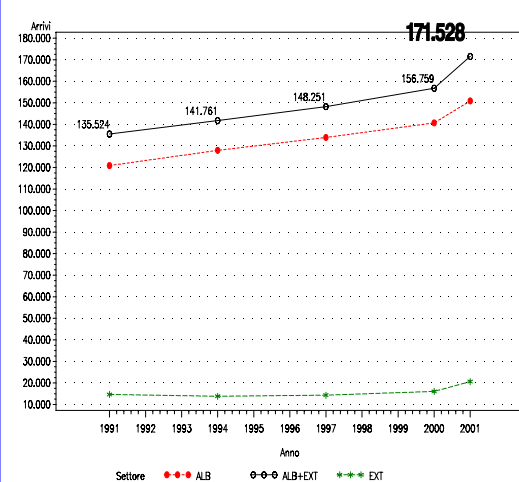
Provenienza=' 2-ITALIA'



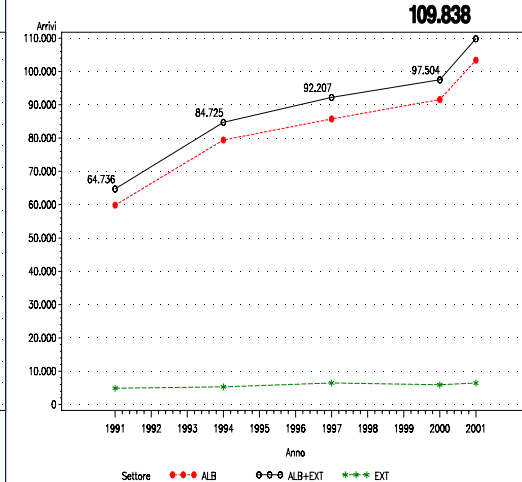
Provenienza=' 3-GERMANIA'



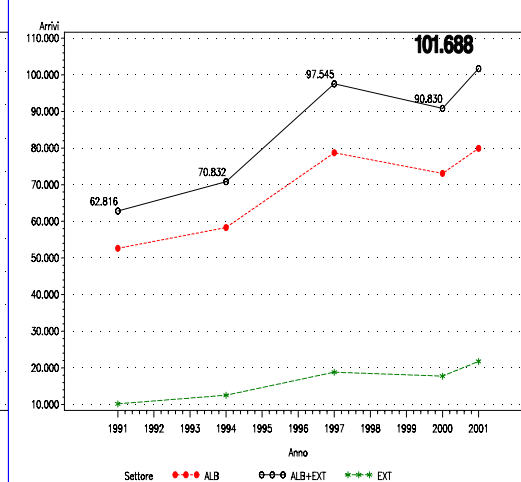
Provenienza=' 4-FRANCIA'



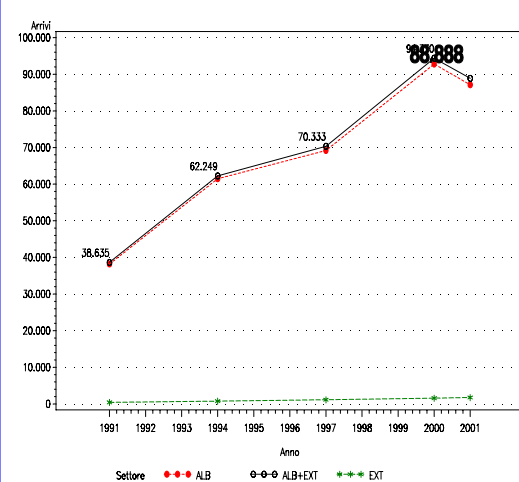
Provenienza=' 5-REGNO UNITO'



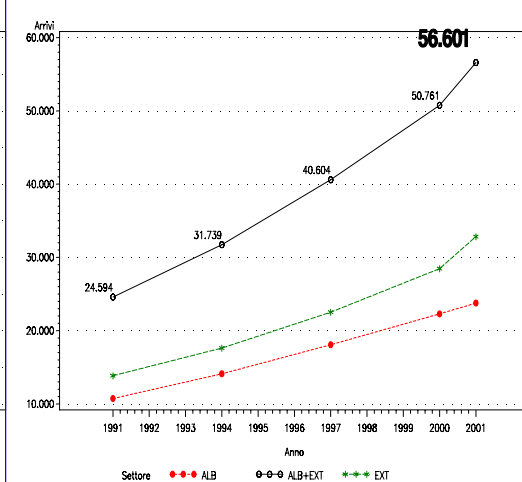
Provenienza=' 6-SVIZZERA'



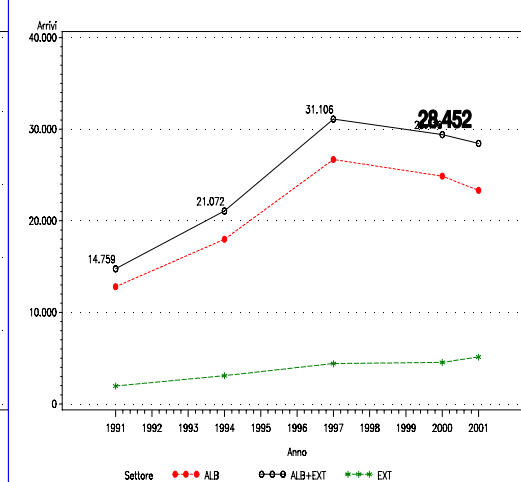
Provenienza=' 7-USA'



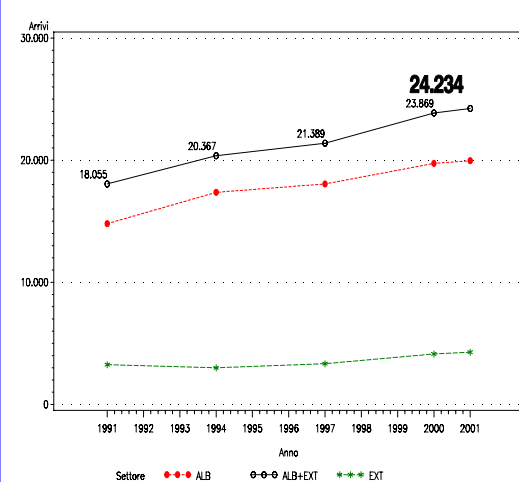
Provenienza=' 8-PAESI BASSI'



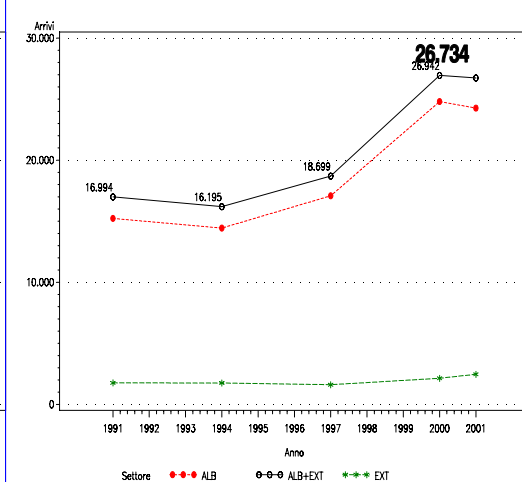
Provenienza=' 9-AUSTRIA'



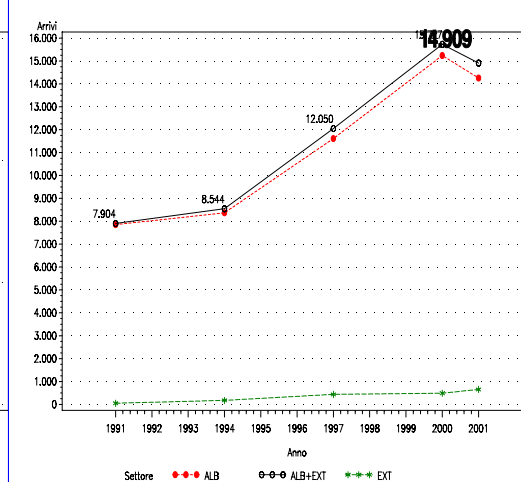
Provenienza=' 11-BELGIO'



Provenienza=' 12-SPAGNA'



Provenienza=' 14-GIAPPONE'



# OFFERTA REGIONE PIEMONTE

N.ESERCIZI

N.LETTI

