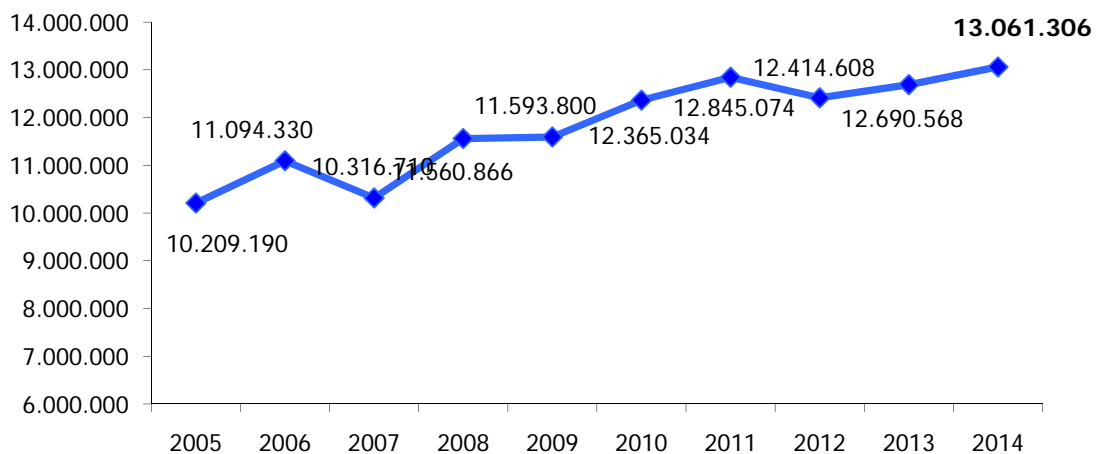
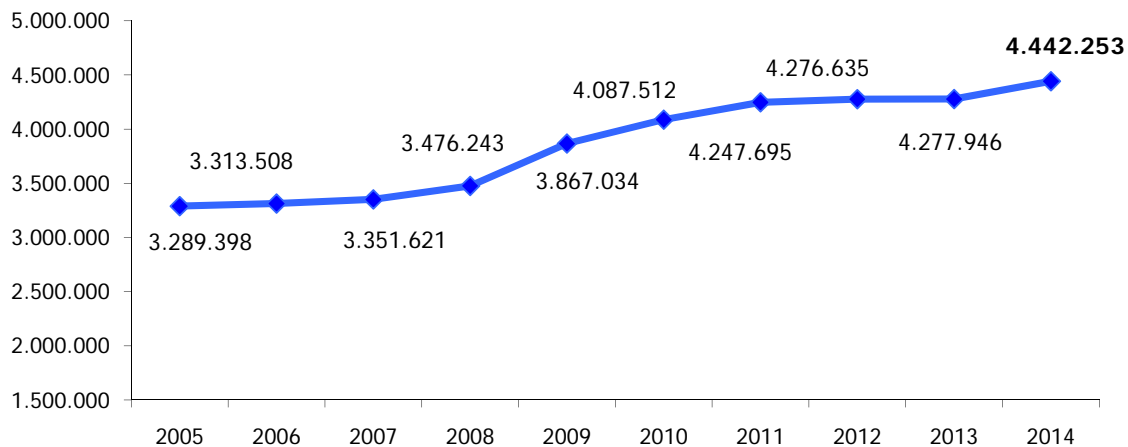


Trend Presenze 2005 - 2014



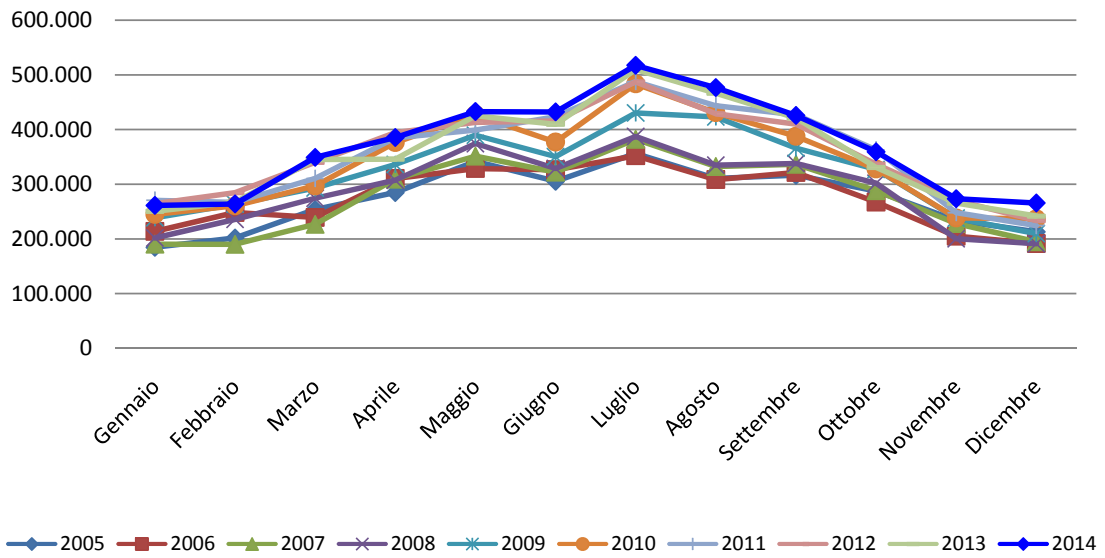
ANNO	PRESENZE	Differenza % su 2005	Differenza % su 2006	Differenza % su 2007	Differenza % su 2008	Differenza % su 2009	Differenza % su 2010	Differenza % su 2011	Differenza % su 2012	Differenza % su 2013
2005	10.209.190									
2006	11.094.330	8,67%								
2007	10.316.710	1,05%	-7,01%							
2008	11.560.866	13,24%	4,21%	12,06%						
2009	11.593.800	13,56%	4,50%	12,38%	0,28%					
2010	12.365.034	21,12%	11,45%	19,85%	6,96%	6,65%				
2011	12.845.074	25,82%	15,78%	24,51%	11,11%	10,79%	3,88%			
2012	12.414.608	21,60%	11,90%	20,33%	7,38%	7,08%	0,40%	-3,35%		
2013	12.690.568	24,31%	14,39%	23,01%	9,77%	9,46%	2,63%	-1,20%	2,22%	
2014	13.061.306	27,94%	17,73%	26,60%	12,98%	12,66%	5,63%	1,68%	5,21%	2,92%

Trend Arrivi 2005 - 2014

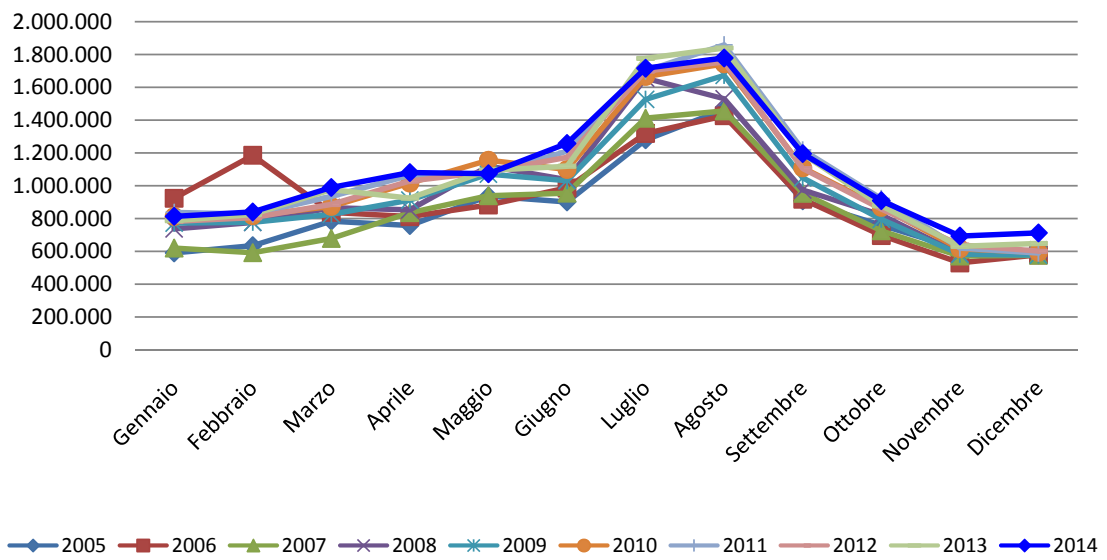


ANNO	ARRIVI	Differenza % su 2005	Differenza % su 2006	Differenza % su 2007	Differenza % su 2008	Differenza % su 2009	Differenza % su 2010	Differenza % su 2011	Differenza % su 2012	Differenza % su 2013
2005	3.289.398									
2006	3.313.508	0,73%								
2007	3.351.621	1,89%	1,15%							
2008	3.476.243	5,68%	4,91%	3,72%						
2009	3.867.034	17,56%	16,71%	15,38%	11,24%					
2010	4.087.512	24,26%	23,36%	21,96%	17,58%	5,70%				
2011	4.247.695	29,13%	28,19%	26,74%	22,19%	9,84%	3,92%			
2012	4.276.635	30,01%	29,07%	27,60%	23,02%	10,59%	4,63%	0,68%		
2013	4.277.946	30,05%	29,11%	27,64%	23,06%	10,63%	4,66%	0,71%	0,03%	
2014	4.442.253	35,05%	34,06%	32,54%	27,79%	14,87%	8,68%	4,58%	3,87%	3,84%

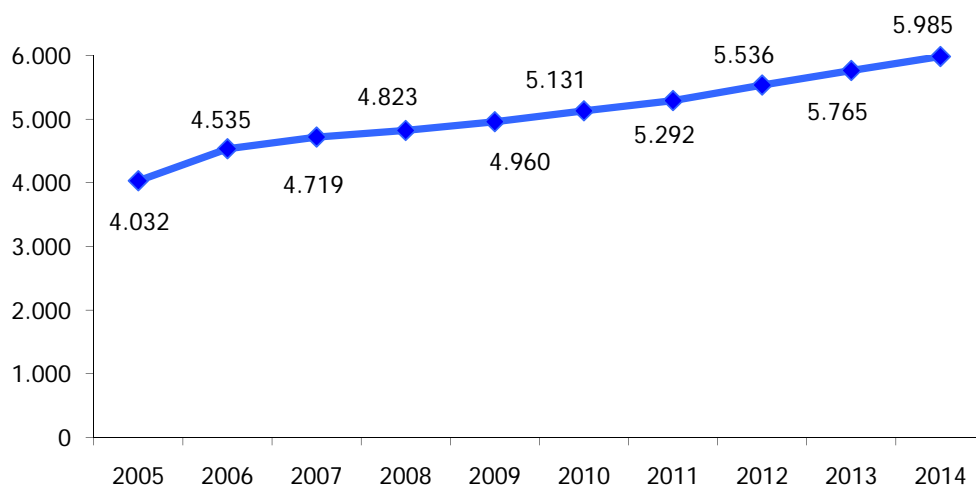
Trend Arrivi Mensili



Trend Presenze Mensili

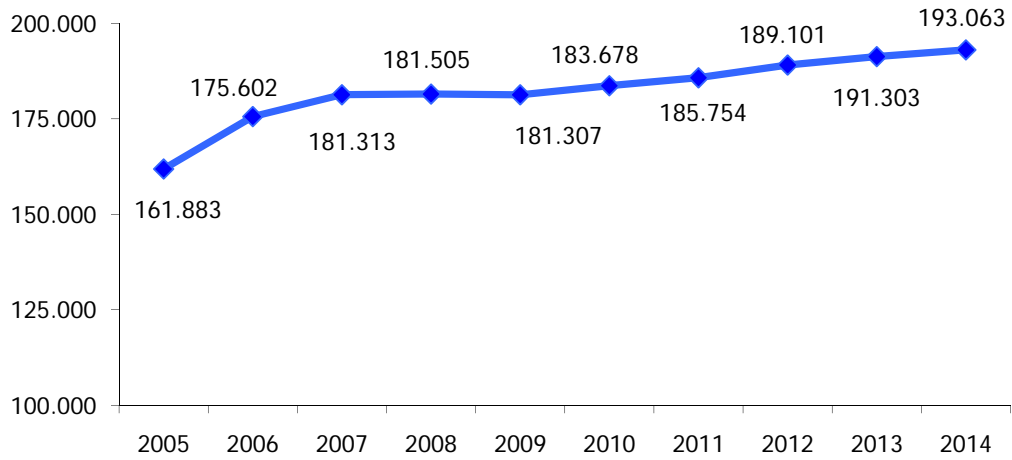


Trend Esercizi Ricettivi 2005 - 2014



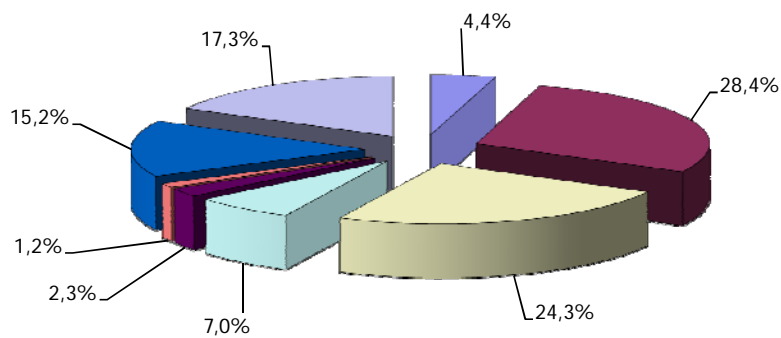
ANNO	STRUTTURE	Differenza % su 2005	Differenza % su 2006	Differenza % su 2007	Differenza % su 2008	Differenza % su 2009	Differenza % su 2010	Differenza % su 2011	Differenza % su 2012	Differenza % su 2013
2005	4.032									
2006	4.535	12,48%								
2007	4.719	17,04%	4,06%							
2008	4.823	19,62%	6,35%	2,20%						
2009	4.960	23,02%	9,37%	5,11%	2,84%					
2010	5.131	27,26%	13,14%	8,73%	6,39%	3,45%				
2011	5.292	31,25%	16,69%	12,14%	9,72%	6,69%	3,14%			
2012	5.536	37,30%	22,07%	17,31%	14,78%	11,61%	7,89%	4,61%		
2013	5.765	42,98%	27,12%	22,17%	19,53%	16,23%	12,36%	8,94%	4,14%	
2014	5.985	48,44%	31,97%	26,83%	24,09%	20,67%	16,64%	13,10%	8,11%	3,82%

Trend Posti Letto 2005 - 2014



ANNO	LETTI	Differenza % su 2005	Differenza % su 2006	Differenza % su 2007	Differenza % su 2008	Differenza % su 2009	Differenza % su 2010	Differenza % su 2011	Differenza % su 2012	Differenza % su 2013
2005	161.883									
2006	175.602	8,47%								
2007	181.313	12,00%	3,25%							
2008	181.505	12,12%	3,36%	0,11%						
2009	181.307	12,00%	3,25%	0,00%	-0,11%					
2010	183.678	13,46%	4,60%	1,30%	1,20%	1,31%				
2011	185.754	14,75%	5,78%	2,45%	2,34%	2,45%	1,13%			
2012	189.101	16,81%	7,69%	4,30%	4,19%	4,30%	2,95%	1,80%		
2013	191.303	18,17%	8,94%	5,51%	5,40%	5,51%	4,15%	2,99%	1,16%	
2014	193.063	19,26%	9,94%	6,48%	6,37%	6,48%	5,11%	3,93%	2,10%	0,92%

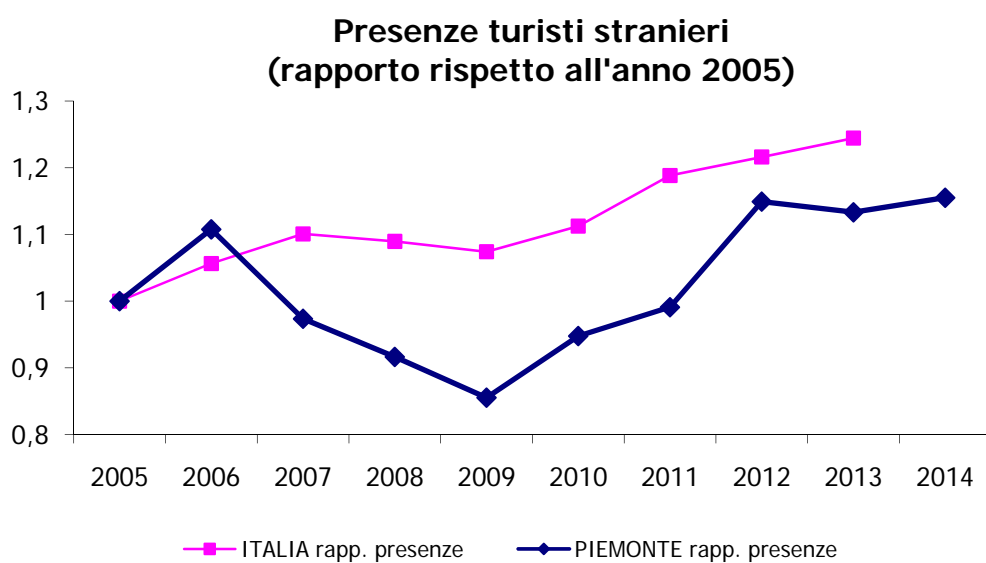
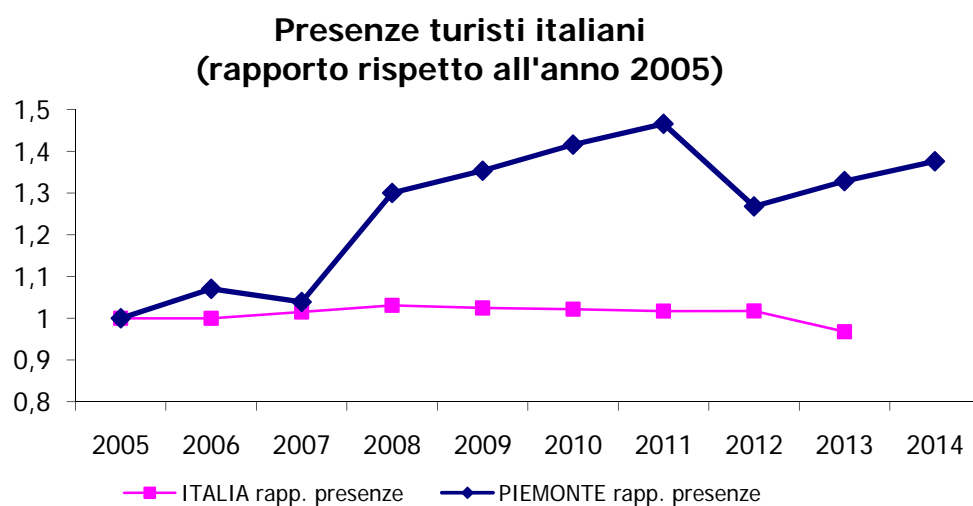
**Presenze 2014 per tipologie di strutture ricettive
Principali Paesi di provenienza - 90% del totale presenze**



- Albergo 1 e 2 stelle
- Albergo 3 stelle
- Albergo 4, 5 e 5 stelle lusso
- Albergo Residenziale
- Agriturismo
- Bed & Breakfast
- Campeggio
- Altro Extra-Alberghiero

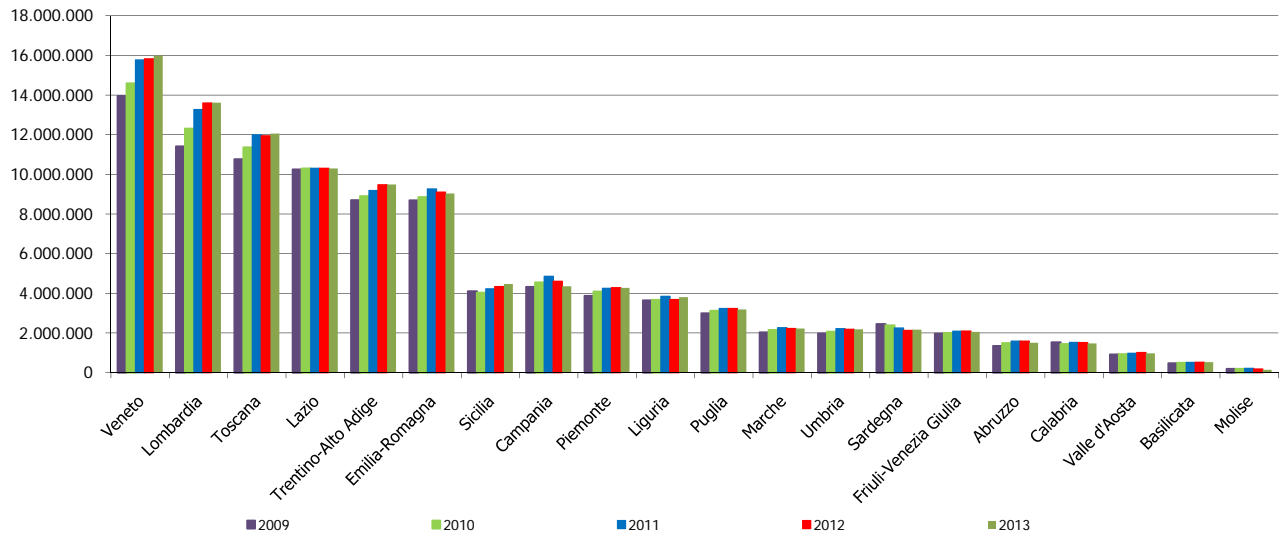
Tipologia struttura	Francia	Paesi Bassi	Germania	Regno Unito	Belgio	Svizzera	Russia	USA	Italia	TOTALE
Albergo 1 e 2 stelle	27.705	4.178	21.272	23.428	3.212	13.425	4.319	3.846	416.732	518.117
Albergo 3 stelle	192.611	38.509	323.694	108.557	28.688	97.276	26.372	31.563	2.466.119	3.313.389
Albergo 4, 5 e 5 stelle lusso	213.594	45.625	236.398	197.991	62.284	131.967	54.779	134.202	1.764.627	2.841.467
Albergo Residenziale	18.338	16.177	33.301	78.757	3.705	9.899	4.692	2.804	650.195	817.868
Agriturismo	13.660	13.625	37.796	5.489	10.472	37.206	2.769	7.514	143.467	271.998
Bed & Breakfast	9.512	6.273	16.321	2.487	3.683	8.396	1.389	2.585	84.028	134.674
Campeggio	42.205	267.513	325.861	17.526	19.973	74.836	244	397	1.022.815	1.771.370
Altro Extra-Alberghiero	67.025	156.853	261.907	34.778	18.088	90.010	10.029	17.078	1.361.364	2.017.132
TOTALE	584.650	548.753	1.256.550	469.013	150.105	463.015	104.593	199.989	7.909.347	11.686.015

Il Piemonte rispetto al totale Italia



Il Piemonte rispetto alle altre regioni italiane

Arrivi



Presenze

