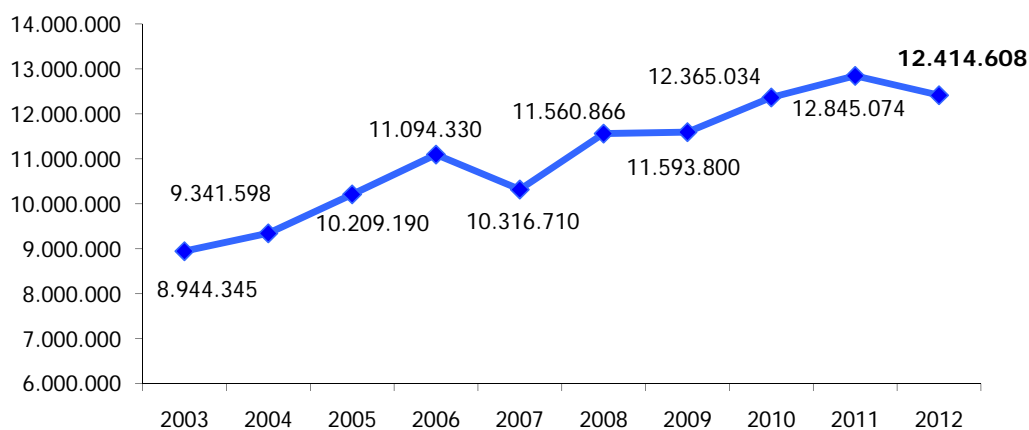
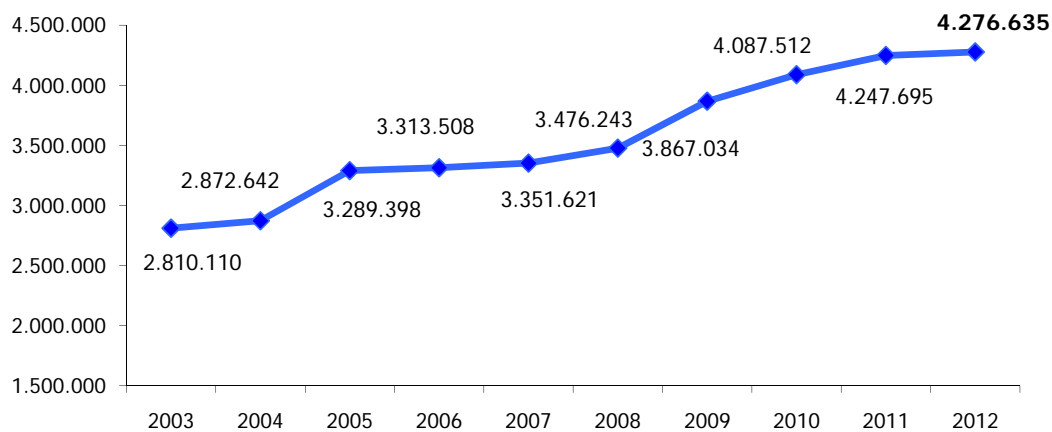


Trend Presenze 2003 - 2012



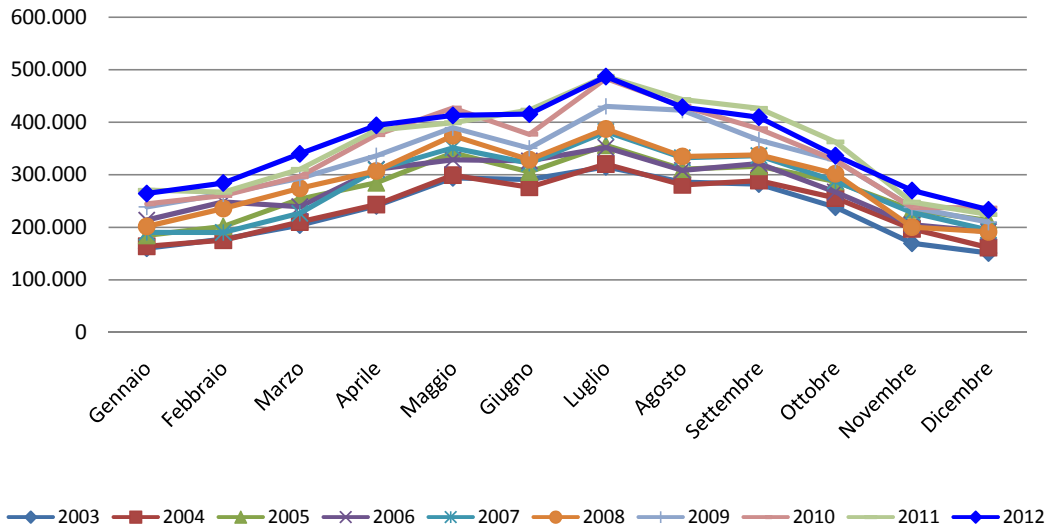
ANNO	PRESENZE	Differenza % su 2003	Differenza % su 2004	Differenza % su 2005	Differenza % su 2006	Differenza % su 2007	Differenza % su 2008	Differenza % su 2009	Differenza % su 2010	Differenza % su 2011
2003	8.944.345									
2004	9.341.598	4,44%								
2005	10.209.190	14,14%	9,29%							
2006	11.094.330	24,04%	18,76%	8,67%						
2007	10.316.710	15,34%	10,44%	1,05%	-7,01%					
2008	11.560.866	29,25%	23,76%	13,24%	4,21%	12,06%				
2009	11.593.800	29,62%	24,11%	13,56%	4,50%	12,38%	0,28%			
2010	12.365.034	38,24%	32,37%	21,12%	11,45%	19,85%	6,96%	6,65%		
2011	12.845.074	43,61%	37,50%	25,82%	15,78%	24,51%	11,11%	10,79%	3,88%	
2012	12.414.608	38,80%	32,90%	21,60%	11,90%	20,33%	7,38%	7,08%	0,40%	-3,35%

Trend Arrivi 2003 - 2012

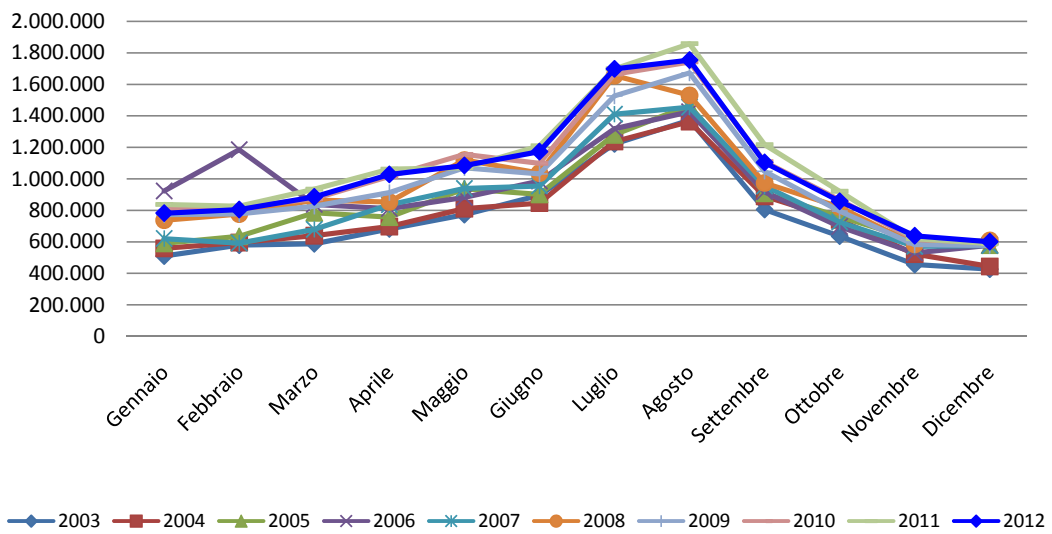


ANNO	PRESENZE	Differenza % su 2003	Differenza % su 2004	Differenza % su 2005	Differenza % su 2006	Differenza % su 2007	Differenza % su 2008	Differenza % su 2009	Differenza % su 2010	Differenza % su 2011
2003	2.810.110									
2004	2.872.642	2,23%								
2005	3.289.398	17,06%	14,51%							
2006	3.313.508	17,91%	15,35%	0,73%						
2007	3.351.621	19,27%	16,67%	1,89%	1,15%					
2008	3.476.243	23,70%	21,01%	5,68%	4,91%	3,72%				
2009	3.867.034	37,61%	34,62%	17,56%	16,71%	15,38%	11,24%			
2010	4.087.512	45,46%	42,29%	24,26%	23,36%	21,96%	17,58%	5,70%		
2011	4.247.695	51,16%	47,87%	29,13%	28,19%	26,74%	22,19%	9,84%	3,92%	
2012	4.276.635	52,19%	48,87%	30,01%	29,07%	27,60%	23,02%	10,59%	4,63%	0,68%

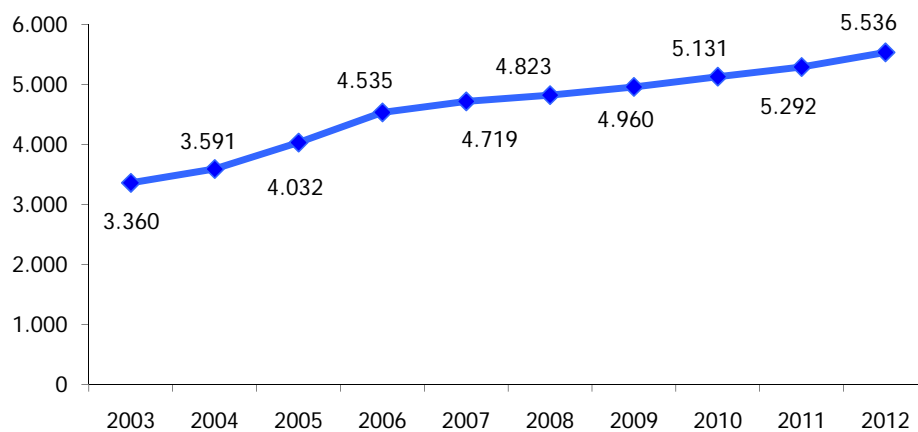
Trend Arrivi Mensili



Trend Presenze Mensili

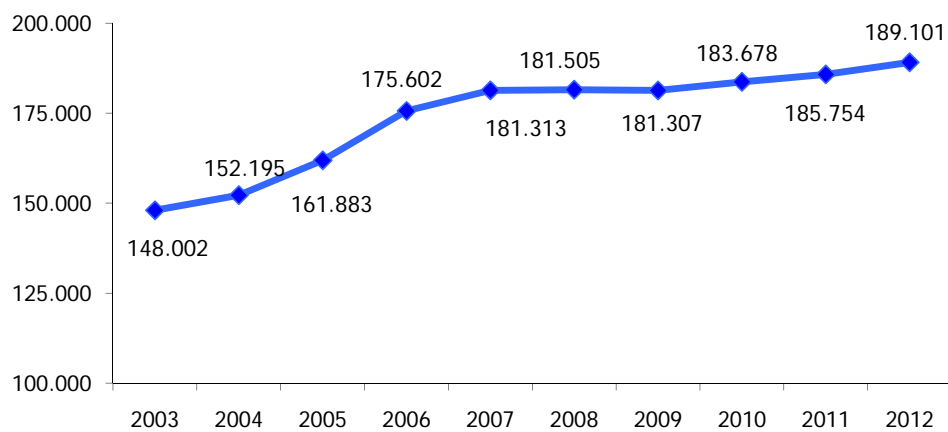


Trend Esercizi Ricettivi 2003 - 2012



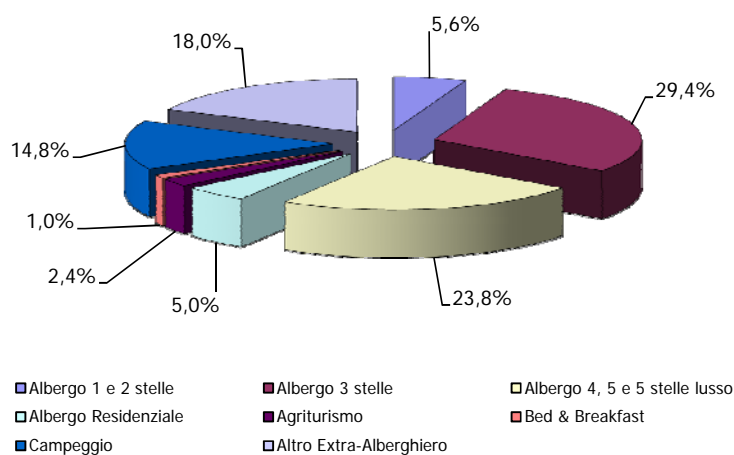
ANNO	ESERCIZI	Differenza % su 2003	Differenza % su 2004	Differenza % su 2005	Differenza % su 2006	Differenza % su 2007	Differenza % su 2008	Differenza % su 2009	Differenza % su 2010	Differenza % su 2011
2003	3.360									
2004	3.591	6,88%								
2005	4.032	20,00%	12,28%							
2006	4.535	34,97%	26,29%	12,48%						
2007	4.719	40,45%	31,41%	17,04%	4,06%					
2008	4.823	43,54%	34,31%	19,62%	6,35%	2,20%				
2009	4.960	47,62%	38,12%	23,02%	9,37%	5,11%	2,84%			
2010	5.131	52,71%	42,88%	27,26%	13,14%	8,73%	6,39%	3,45%		
2011	5.292	57,50%	47,37%	31,25%	16,69%	12,14%	9,72%	6,69%	3,14%	
2012	5.536	64,76%	54,16%	37,30%	22,07%	17,31%	14,78%	11,61%	7,89%	4,61%

Trend Posti Letto 2003 - 2012



ANNO	LETTI	Differenza % su 2003	Differenza % su 2004	Differenza % su 2005	Differenza % su 2006	Differenza % su 2007	Differenza % su 2008	Differenza % su 2009	Differenza % su 2010	Differenza % su 2011
2003	148.002									
2004	152.195	2,83%								
2005	161.883	9,38%	6,37%							
2006	175.602	18,65%	15,38%	8,47%						
2007	181.313	22,51%	19,13%	12,00%	3,25%					
2008	181.505	22,64%	19,26%	12,12%	3,36%	0,11%				
2009	181.307	22,50%	19,13%	12,00%	3,25%	0,00%	-0,11%			
2010	183.678	24,11%	20,69%	13,46%	4,60%	1,30%	1,20%	1,31%		
2011	185.754	25,51%	22,05%	14,75%	5,78%	2,45%	2,34%	2,45%	1,13%	
2012	189.101	27,77%	24,25%	16,81%	7,69%	4,30%	4,19%	4,30%	2,95%	1,80%

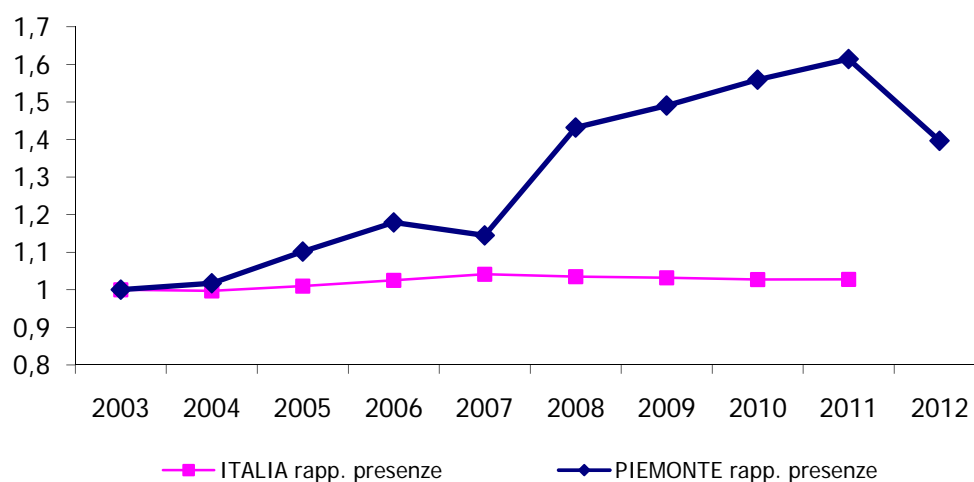
Presenze 2012 per tipologie di strutture ricettive



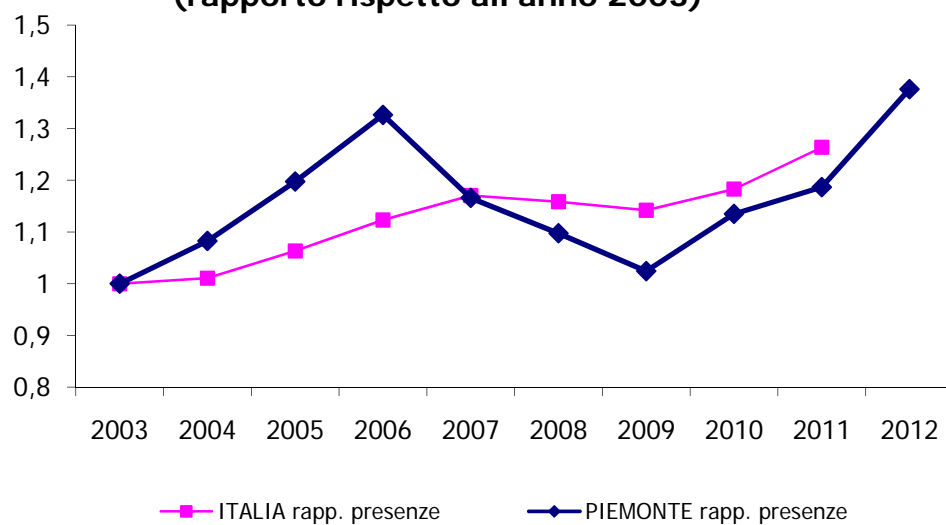
Tipologia struttura	Francia	Paesi Bassi	Germania	Regno Unito	Svizzera	Austria	USA	Italia	TOTALE
Albergo 1 e 2 stelle	26.449	4.765	22.348	24.576	11.866	3.928	4.295	511.813	610.040
Albergo 3 stelle	206.101	55.651	335.899	120.346	103.894	45.789	31.647	2.294.416	3.193.743
Albergo 4, 5 e 5 stelle lusso	181.687	44.315	263.619	177.793	115.149	36.202	96.075	1.669.777	2.584.617
Albergo Residenziale	12.990	18.806	39.989	16.799	7.650	2.450	2.504	437.120	538.308
Agriturismo	12.392	12.521	39.628	5.041	32.128	4.292	8.164	148.328	262.494
Bed & Breakfast	6.818	4.401	14.173	1.712	5.284	851	2.390	73.463	109.092
Campeggio	34.745	322.782	350.758	18.371	66.447	9.341	554	800.931	1.603.929
Altro Extra-Alberghiero	58.519	159.814	246.226	22.908	79.816	21.405	15.237	1.353.004	1.956.929
TOTALE	539.701	623.055	1.312.640	387.546	422.234	124.258	160.866	7.288.852	10.859.152

Il Piemonte rispetto al totale Italia

**Presenze turisti italiani
(rapporto rispetto all'anno 2003)**

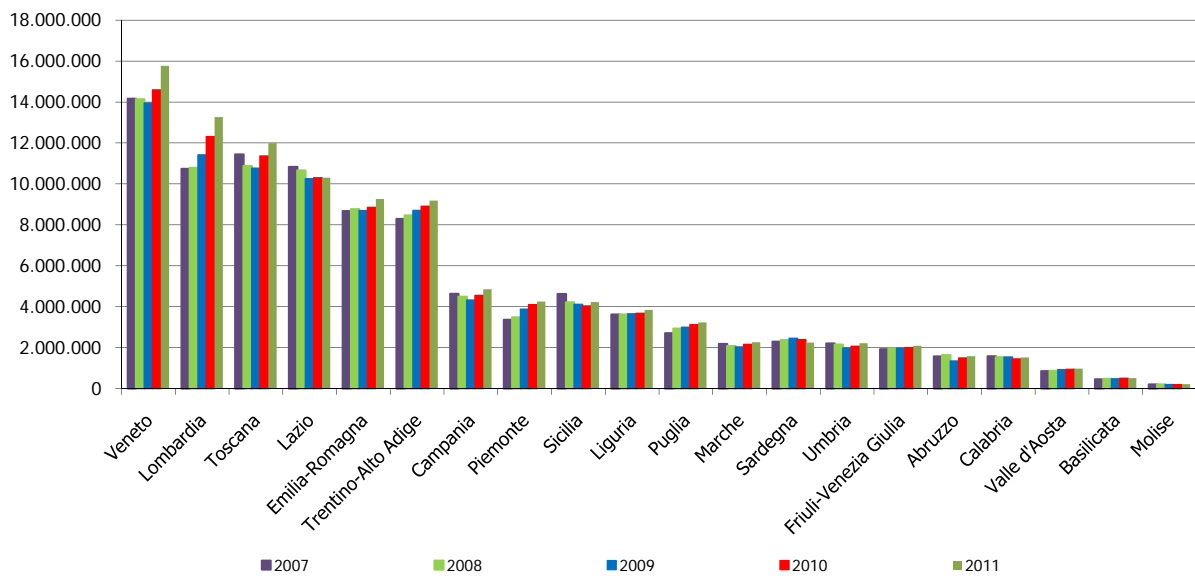


**Presenze turisti stranieri
(rapporto rispetto all'anno 2003)**



Il Piemonte rispetto alle altre regioni italiane

Arrivi



Presenze

