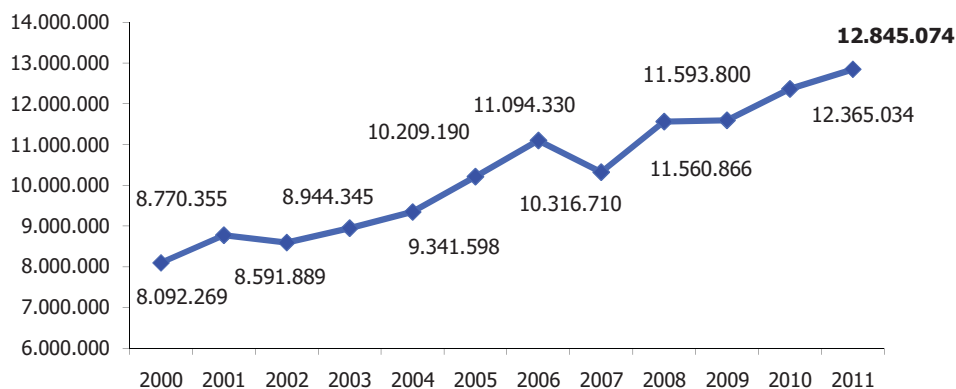
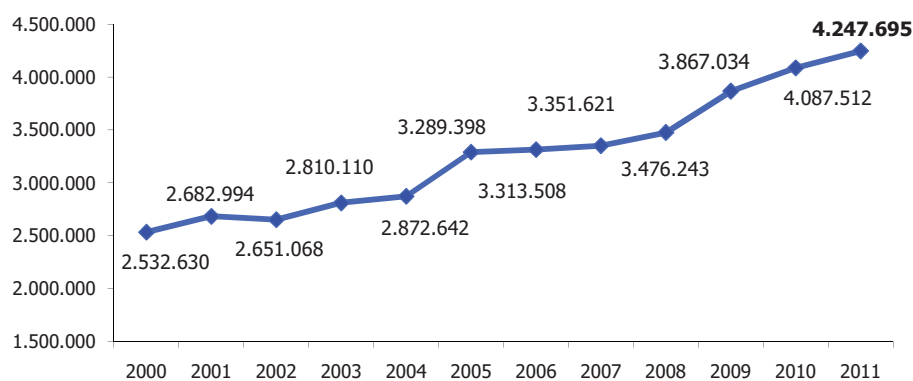


## Trend Presenze 2000 - 2011



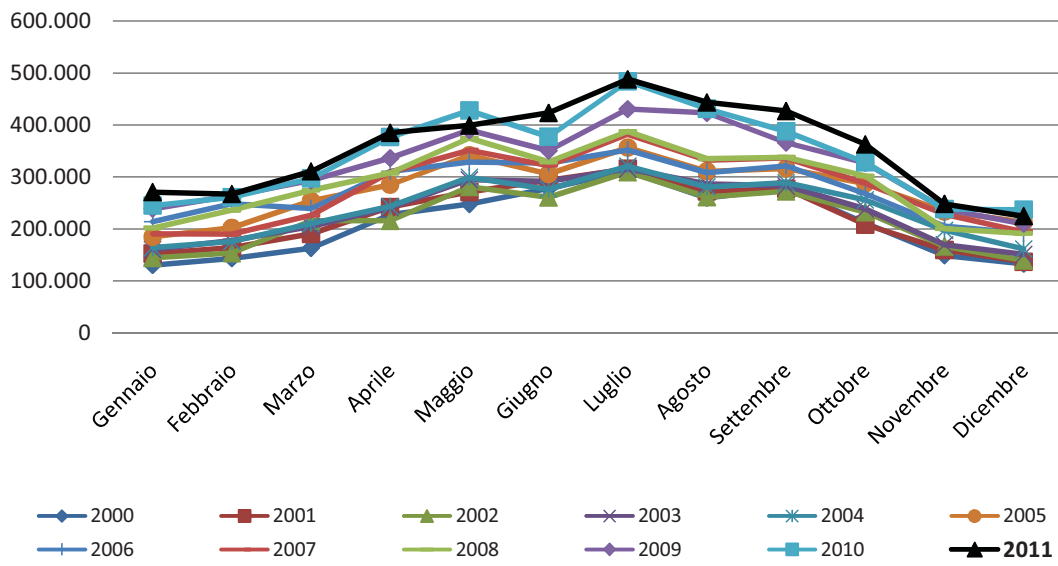
ANNO	PRESENZE	Differenza % su 2000	Differenza % su 2001	Differenza % su 2002	Differenza % su 2003	Differenza % su 2004	Differenza % su 2005	Differenza % su 2006	Differenza % su 2007	Differenza % su 2008	Differenza % su 2009	Differenza % su 2010
2000	8.092.269											
2001	8.770.355	8,38%										
2002	8.591.889	6,17%	-2,03%									
2003	8.944.345	10,53%	1,98%	4,10%								
2004	9.341.598	15,44%	6,51%	8,73%	4,44%							
2005	10.209.190	26,16%	16,41%	18,82%	14,14%	9,29%						
2006	11.094.330	37,10%	26,50%	29,13%	24,04%	18,76%	8,67%					
2007	10.316.710	27,49%	17,63%	20,07%	15,34%	10,44%	1,05%	-7,01%				
2008	11.560.866	42,86%	31,82%	34,56%	29,25%	23,76%	13,24%	4,21%	12,06%			
2009	11.593.800	43,27%	32,19%	34,94%	29,62%	24,11%	13,56%	4,50%	12,38%	0,28%		
2010	12.365.034	52,80%	40,99%	43,92%	38,24%	32,37%	21,12%	11,45%	19,85%	6,96%	6,65%	
<b>2011</b>	<b>12.845.074</b>	<b>58,73%</b>	<b>46,46%</b>	<b>49,50%</b>	<b>43,61%</b>	<b>37,50%</b>	<b>25,82%</b>	<b>15,78%</b>	<b>24,51%</b>	<b>11,11%</b>	<b>10,79%</b>	<b>3,88%</b>

## Trend Arrivi 2000 - 2011

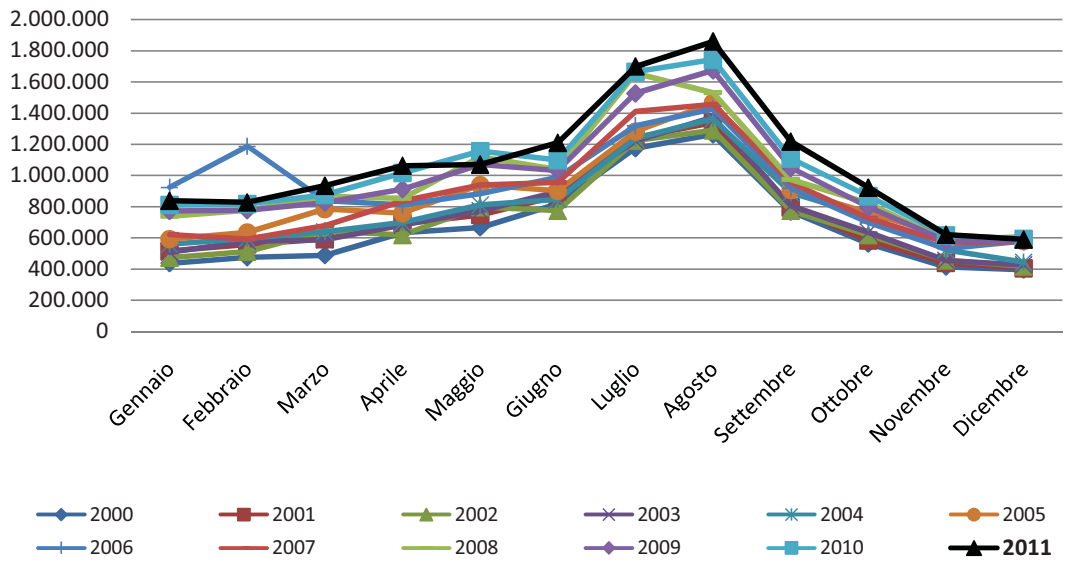


ANNO	ARRIVI	Differenza % su 2000	Differenza % su 2001	Differenza % su 2002	Differenza % su 2003	Differenza % su 2004	Differenza % su 2005	Differenza % su 2006	Differenza % su 2007	Differenza % su 2008	Differenza % su 2009	Differenza % su 2010
2000	2.532.630											
2001	2.682.994	5,94%										
2002	2.651.068	4,68%	-1,19%									
2003	2.810.110	10,96%	4,74%	6,00%								
2004	2.872.642	13,43%	7,07%	8,36%	2,23%							
2005	3.289.398	29,88%	22,60%	24,08%	17,06%	14,51%						
2006	3.313.508	30,83%	23,50%	24,99%	17,91%	15,35%	0,73%					
2007	3.351.621	32,34%	24,92%	26,43%	19,27%	16,67%	1,89%	1,15%				
2008	3.476.243	37,26%	29,57%	31,13%	23,70%	21,01%	5,68%	4,91%	3,72%			
2009	3.867.034	52,69%	44,13%	45,87%	37,61%	34,62%	17,56%	16,71%	15,38%	11,24%		
2010	4.087.512	61,39%	52,35%	54,18%	45,46%	42,29%	24,26%	23,36%	21,96%	17,58%	5,70%	
<b>2011</b>	<b>4.247.695</b>	<b>67,72%</b>	<b>58,32%</b>	<b>60,23%</b>	<b>51,16%</b>	<b>47,87%</b>	<b>29,13%</b>	<b>28,19%</b>	<b>26,74%</b>	<b>22,19%</b>	<b>9,84%</b>	<b>3,92%</b>

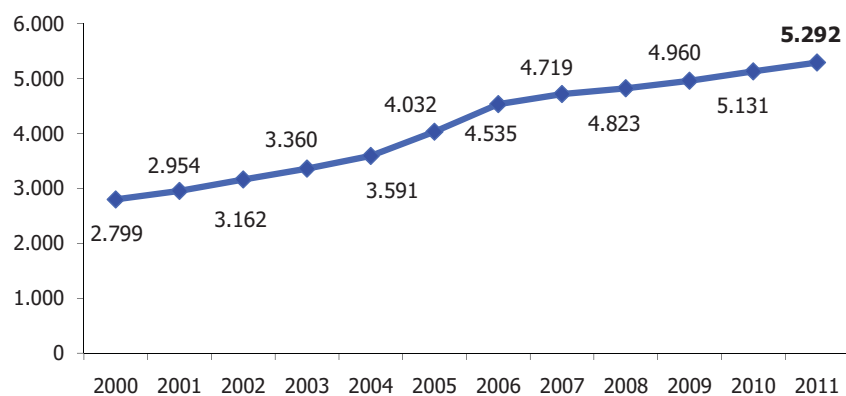
### Trend Arrivi Mensili



### Trend Presenze Mensili

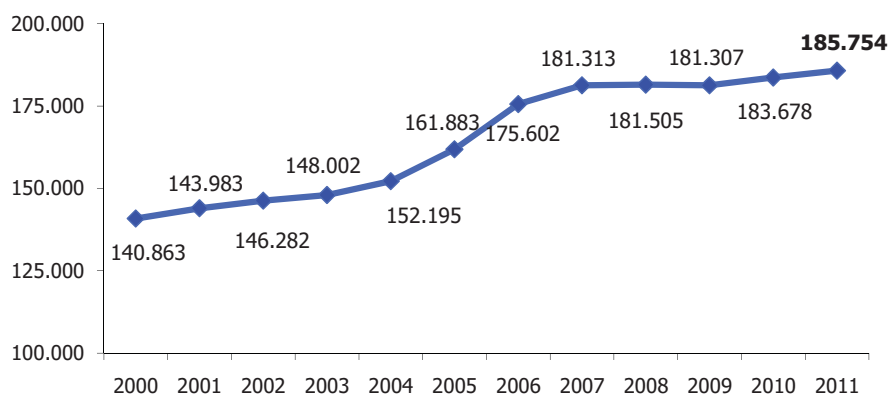


## Trend Esercizi Ricettivi 2000 - 2011



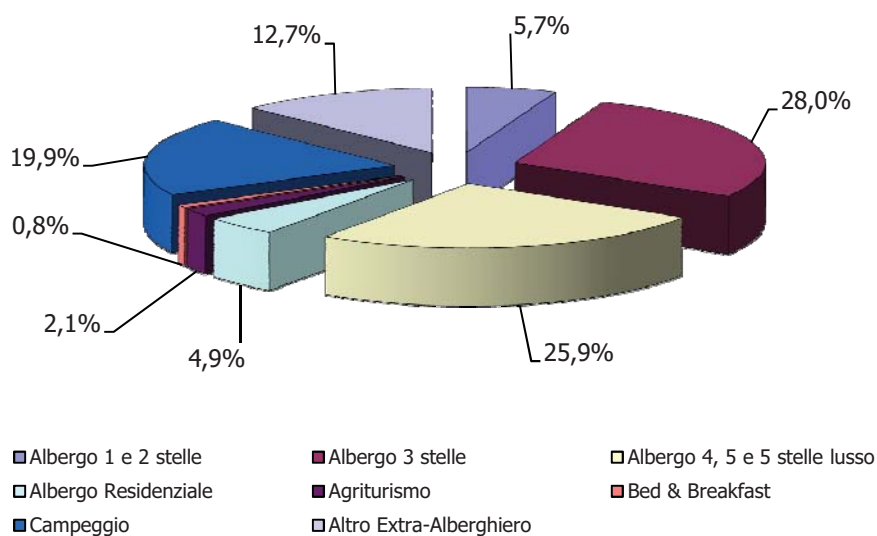
ANNO	ESERCIZI	Differenza % su 2000	Differenza % su 2001	Differenza % su 2002	Differenza % su 2003	Differenza % su 2004	Differenza % su 2005	Differenza % su 2006	Differenza % su 2007	Differenza % su 2008	Differenza % su 2009	Differenza % su 2010
2000	2.799											
2001	2.954	5,54%										
2002	3.162	12,97%	7,04%									
2003	3.360	20,04%	13,74%	6,26%								
2004	3.591	28,30%	21,56%	13,57%	6,88%							
2005	4.032	44,05%	36,49%	27,51%	20,00%	12,28%						
2006	4.535	62,02%	53,52%	43,42%	34,97%	26,29%	12,48%					
2007	4.719	68,60%	59,75%	49,24%	40,45%	31,41%	17,04%	4,06%				
2008	4.823	72,31%	63,27%	52,53%	43,54%	34,31%	19,62%	6,35%	2,20%			
2009	4.960	77,21%	67,91%	56,86%	47,62%	38,12%	23,02%	9,37%	5,11%	2,84%		
2010	5.131	83,32%	73,70%	62,27%	52,71%	42,88%	27,26%	13,14%	8,73%	6,39%	3,45%	
<b>2011</b>	<b>5.292</b>	<b>89,07%</b>	<b>79,15%</b>	<b>67,36%</b>	<b>57,50%</b>	<b>47,37%</b>	<b>31,25%</b>	<b>16,69%</b>	<b>12,14%</b>	<b>9,72%</b>	<b>6,69%</b>	<b>3,14%</b>

## Trend Posti Letto 2000 - 2011



ANNO	LETTI	Differenza % su 2000	Differenza % su 2001	Differenza % su 2002	Differenza % su 2003	Differenza % su 2004	Differenza % su 2005	Differenza % su 2006	Differenza % su 2007	Differenza % su 2008	Differenza % su 2009	Differenza % su 2010
2000	140.863											
2001	143.983	2,21%										
2002	146.282	3,85%	1,60%									
2003	148.002	5,07%	2,79%	1,18%								
2004	152.195	8,04%	5,70%	4,04%	2,83%							
2005	161.883	14,92%	12,43%	10,67%	9,38%	6,37%						
2006	175.602	24,66%	21,96%	20,04%	18,65%	15,38%	8,47%					
2007	181.313	28,72%	25,93%	23,95%	22,51%	19,13%	12,00%	3,25%				
2008	181.505	28,85%	26,06%	24,08%	22,64%	19,26%	12,12%	3,36%	0,11%			
2009	181.307	28,71%	25,92%	23,94%	22,50%	19,13%	12,00%	3,25%	0,00%	-0,11%		
2010	183.678	30,39%	27,57%	25,56%	24,11%	20,69%	13,46%	4,60%	1,30%	1,20%	1,31%	
<b>2011</b>	<b>185.754</b>	<b>31,87%</b>	<b>29,01%</b>	<b>26,98%</b>	<b>25,51%</b>	<b>22,05%</b>	<b>14,75%</b>	<b>5,78%</b>	<b>2,45%</b>	<b>2,34%</b>	<b>2,45%</b>	<b>1,13%</b>

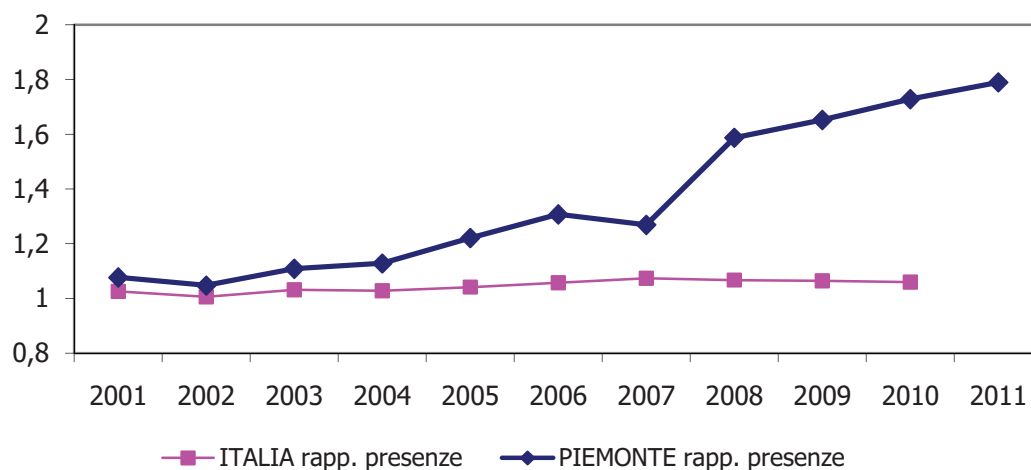
### Presenze 2011 per tipologie di strutture ricettive



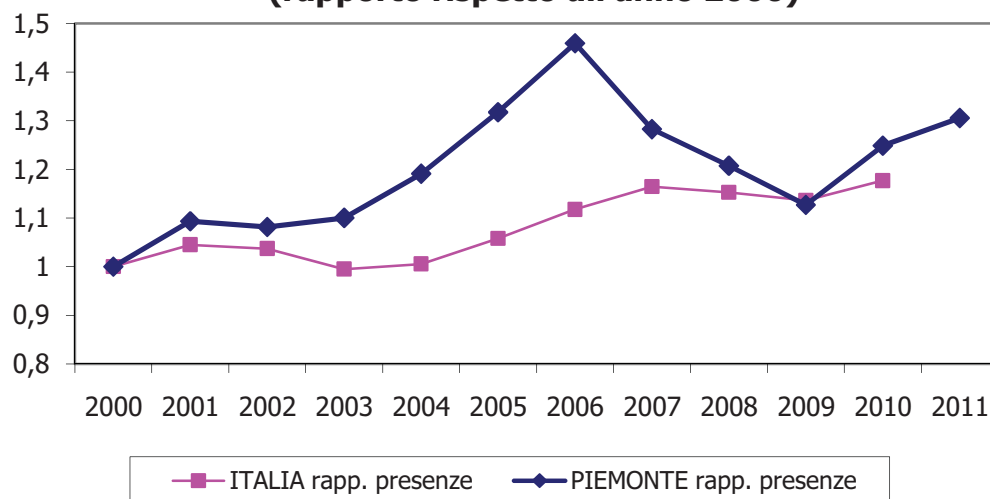
Tipologia struttura	Francia	Paesi Bassi	Germania	Regno Unito	Svizzera	Austria	USA	Italia
Albergo 1 e 2 stelle	28.377	5.272	24.150	19.055	10.796	4.332	4.778	559.029
Albergo 3 stelle	170.265	29.945	281.899	94.161	83.074	22.889	25.325	2.497.966
Albergo 4, 5 e 5 stelle lusso	166.853	47.191	240.965	165.696	94.930	33.627	104.129	2.109.183
Albergo Residenziale	10.605	22.229	41.006	13.584	7.900	1.935	2.242	462.148
Agriturismo	8.659	9.219	35.943	4.135	26.312	3.727	6.965	142.105
Bed & Breakfast	4.413	3.620	12.768	1.337	4.552	643	1.714	58.515
Campeggio	33.943	427.269	407.019	20.172	79.873	11.414	478	1.289.586
Altro Extra-Alberghiero	35.440	47.223	129.669	11.424	31.363	9.439	6.416	1.180.618
<b>TOTALE</b>	<b>458.555</b>	<b>591.968</b>	<b>1.173.419</b>	<b>329.564</b>	<b>338.800</b>	<b>88.006</b>	<b>152.047</b>	<b>8.299.150</b>

## Il Piemonte rispetto al totale Italia

**Presenze turisti italiani  
(rapporto rispetto all'anno 2000)**

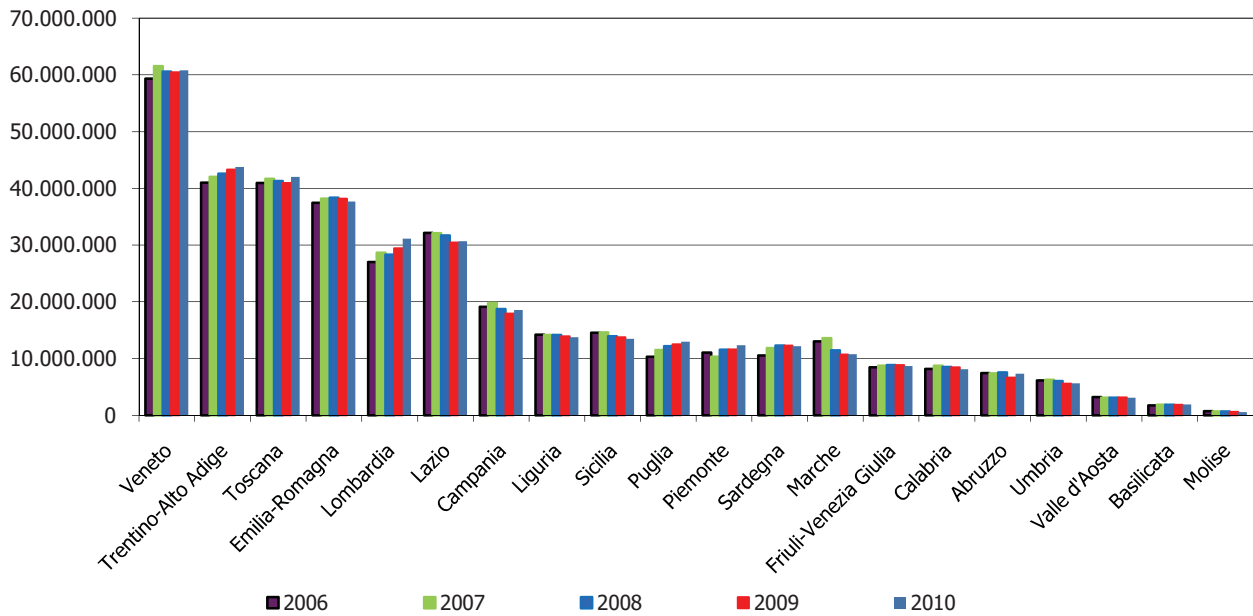


**Presenze turisti stranieri  
(rapporto rispetto all'anno 2000)**



# Il Piemonte rispetto alle altre regioni italiane

## Presenze



## Arrivi

