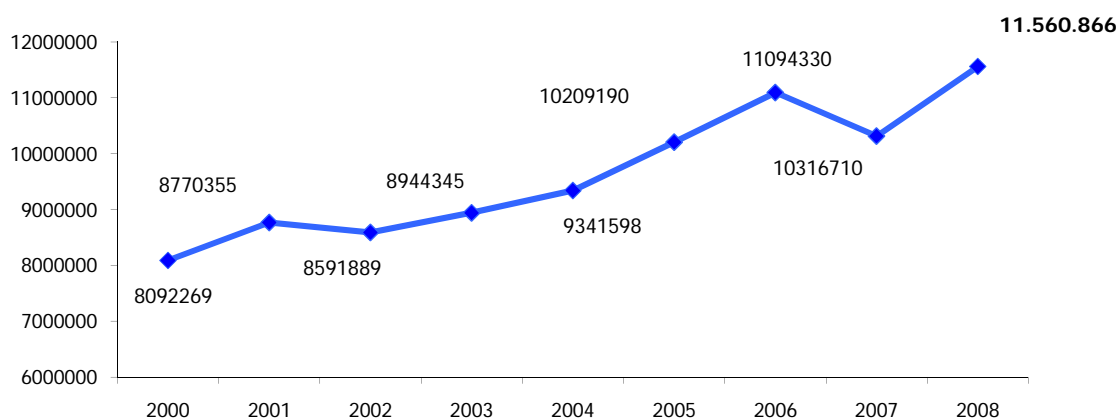


Presenze in Piemonte

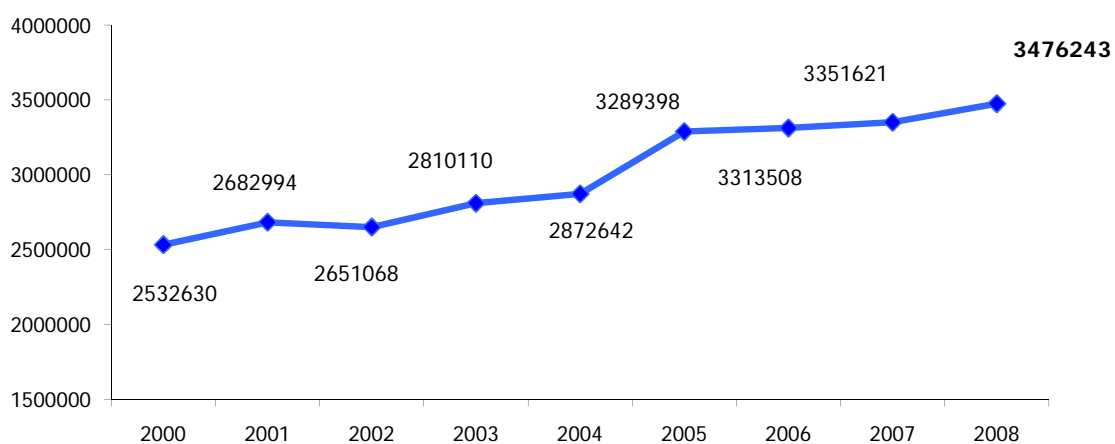
Trend Presenze 2000 - 2008



Anno	Presenze	Differenza % su 2000	Differenza % su 2001	Differenza % su 2002	Differenza % su 2003	Differenza % su 2004	Differenza % su 2005	Differenza % su 2006	Differenza % su 2007
2000	8.092.269								
2001	8.770.355	8,38%							
2002	8.591.889	6,17%	-2,03%						
2003	8.944.345	10,53%	1,98%	4,10%					
2004	9.341.598	15,44%	6,51%	8,73%	4,44%				
2005	10.209.190	26,16%	16,41%	18,82%	14,14%	9,29%			
2006	11.094.330	37,10%	26,50%	29,13%	24,04%	18,76%			
2007	10.316.710	27,49%	17,63%	20,07%	15,34%	10,44%	8,67%	-7,01%	
2008	11.560.866	42,86%	31,82%	34,56%	29,25%	23,76%	1,05%	4,21%	12,06%

Arrivi in Piemonte

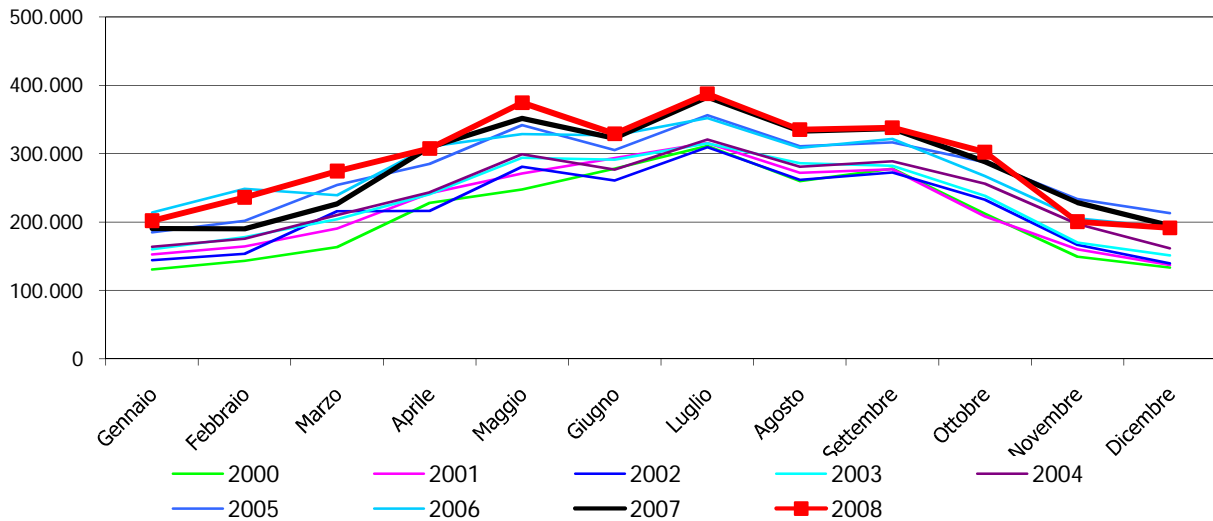
Trend Arrivi 2000 - 2008



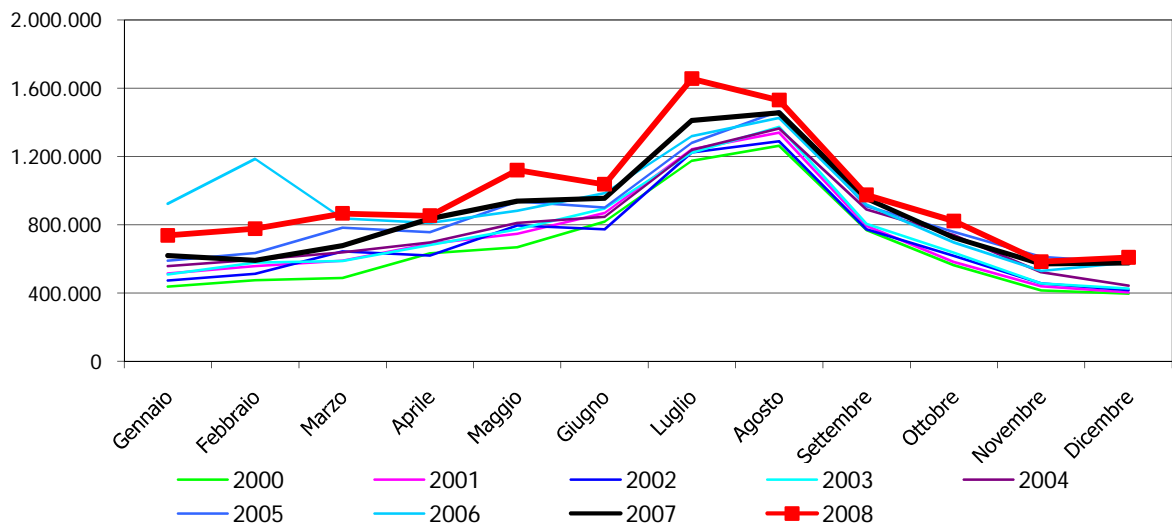
Anno	Arrivi	Differenza							Differenza % su 2007
		% su 2000	% su 2001	% su 2002	% su 2003	% su 2004	% su 2005	% su 2006	
2000	2.532.630								
2001	2.682.994	5,94%							
2002	2.651.068	4,68%	-1,19%						
2003	2.810.110	10,96%	4,74%	6,00%					
2004	2.872.642	13,43%	7,07%	8,36%	2,23%				
2005	3.289.398	29,88%	22,60%	24,08%	17,06%	14,51%			
2006	3.313.508	30,83%	23,50%	24,99%	17,91%	15,35%	0,73%		
2007	3.351.621	32,34%	24,92%	26,43%	19,27%	16,67%	1,89%	1,15%	
2008	3.476.243	37,26%	29,57%	31,13%	23,70%	21,01%	5,68%	4,91%	3,72%

Trend mensile dei flussi turistici in Piemonte

Trend Arrivi Mensili

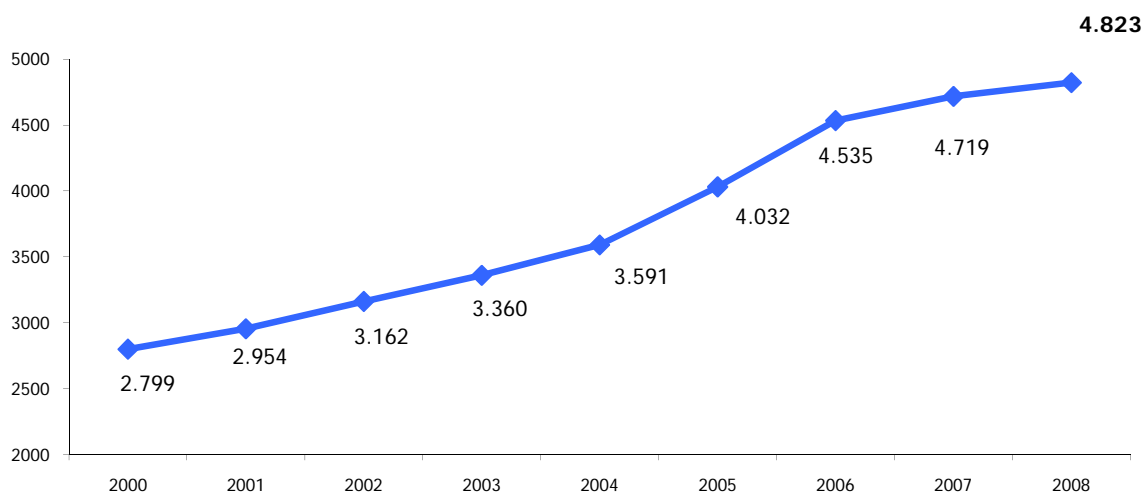


Trend Presenze Mensili



Esercizi Ricettivi in Piemonte

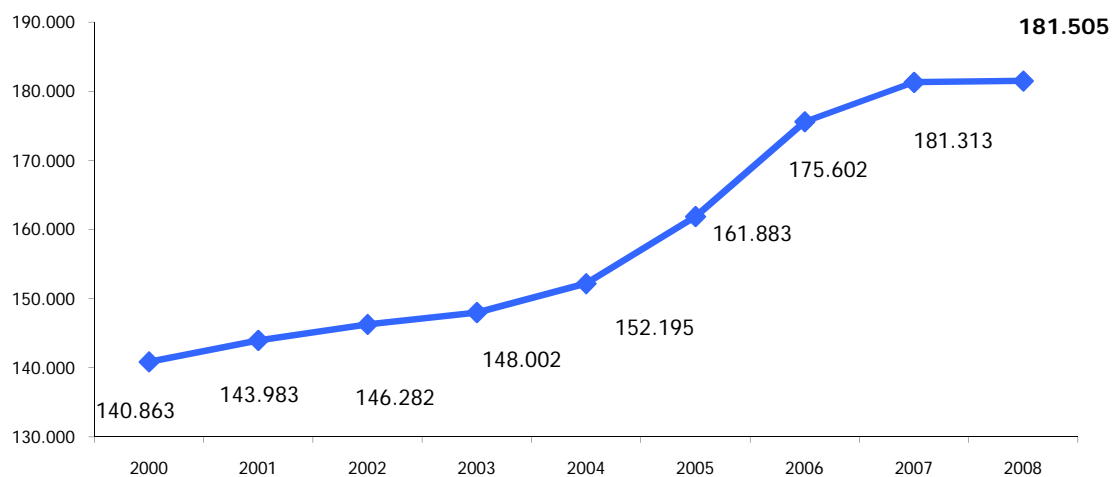
Trend Esercizi Ricettivi
2000 - 2008



Anno	Esercizi	Differenza				Differenza			
		% su 2000	Differenza % su 2001	Differenza % su 2002	Differenza % su 2003	% su 2004	Differenza % su 2005	Differenza % su 2006	Differenza % su 2007
2000	2.799								
2001	2.954	5,54%							
2002	3.162	12,97%	7,04%						
2003	3.360	20,04%	13,74%	6,26%					
2004	3.591	28,30%	21,56%	13,57%	6,88%				
2005	4.032	44,05%	36,49%	27,51%	20,00%	12,28%			
2006	4.535	62,02%	53,52%	43,42%	34,97%	26,29%	12,48%		
2007	4.719	68,60%	59,75%	49,24%	40,45%	31,41%	17,04%	4,06%	
2008	4.823	72,31%	63,27%	52,53%	43,54%	34,31%	19,62%	6,35%	2,20%

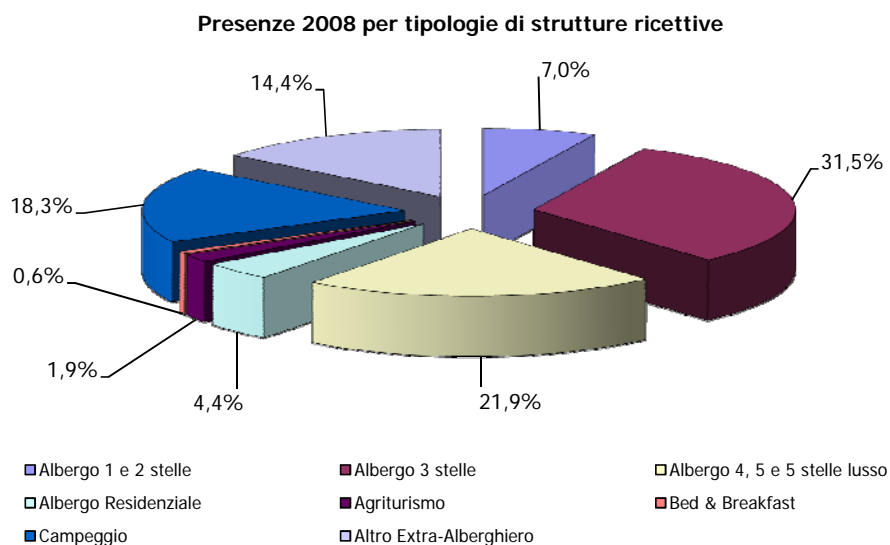
Posti Letto in Piemonte

Trend Posti Letto
2000 - 2008



Anno	Posti Letto	Differenza % su 2000	Differenza % su 2001	Differenza % su 2002	Differenza % su 2003	Differenza % su 2004	Differenza % su 2005	Differenza % su 2006	Differenza % su 2007
2000	140.863								
2001	143.983	2,21%							
2002	146.282	3,85%	1,60%						
2003	148.002	5,07%	2,79%	1,18%					
2004	152.195	8,04%	5,70%	4,04%	2,83%				
2005	161.883	14,92%	12,43%	10,67%	9,38%	6,37%			
2006	175.602	24,66%	21,96%	20,04%	18,65%	15,38%	8,47%		
2007	181.313	28,72%	25,93%	23,95%	22,51%	19,13%	12,00%	3,25%	3,25%
2008	181.505	28,85%	26,06%	24,08%	22,64%	19,26%	12,12%	3,36%	0,11%

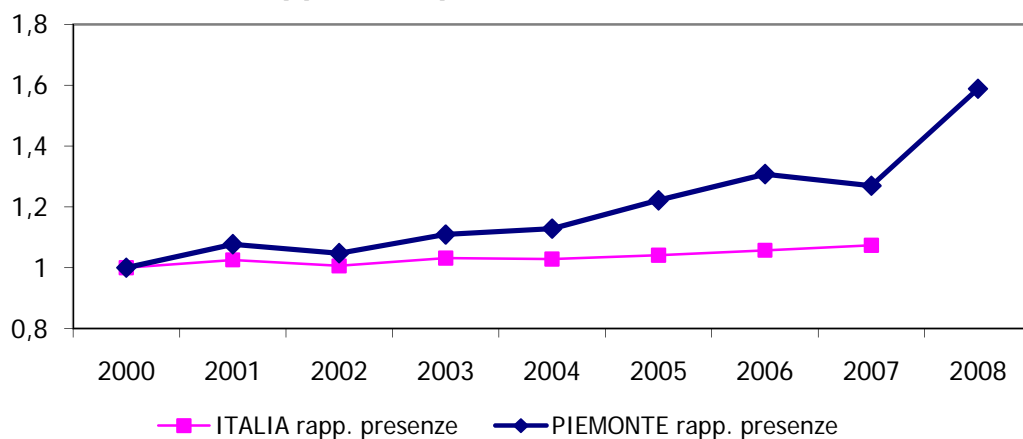
Presenze per tipologia di struttura ricettiva



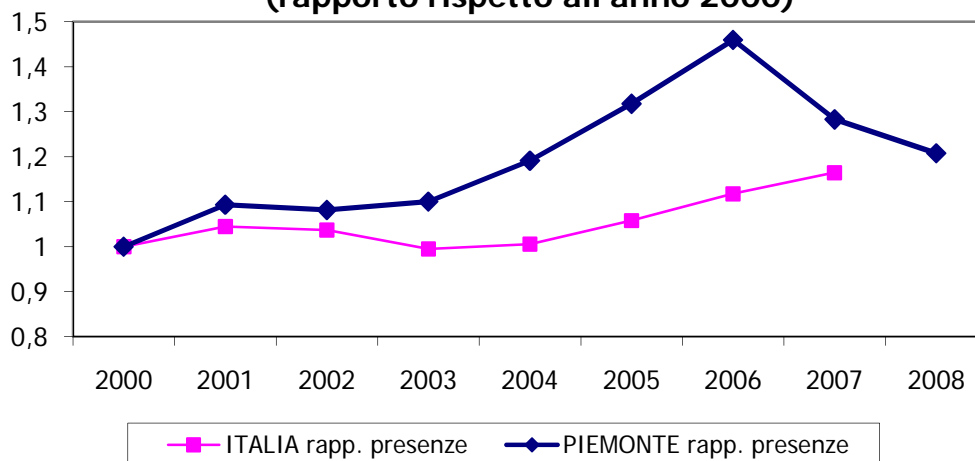
Tipologia struttura	Francia	Paesi Bassi	Germania	Regno Unito	Svizzera	Austria	USA	Italia	TOTALE
Albergo 1 e 2 stelle	22.963	4.910	24.960	20.638	11.394	2.886	3.888	583.949	807.375
Albergo 3 stelle	153.468	30.619	269.752	122.459	67.476	28.833	26.809	2.577.176	3.635.981
Albergo 4, 5 e 5 stelle lusso	125.995	37.243	164.370	226.842	61.399	24.497	94.234	1.398.387	2.535.028
Albergo Residenziale	9.779	21.045	31.639	34.359	4.511	1.538	2.267	295.585	510.983
Agriturismo	6.870	8.233	29.041	4.000	18.460	3.314	5.765	116.580	220.773
Bed & Breakfast	3.066	1.558	7.562	752	2.560	695	993	43.610	69.325
Campeggio	26.288	395.432	326.679	19.185	66.346	8.788	483	1.219.800	2.113.892
Altro Extra-Alberghiero	36.983	27.952	114.395	26.921	40.307	13.478	6.045	1.238.210	1.667.509
TOTALE	385.412	526.992	968.398	455.156	272.453	84.029	140.484	7.473.297	11.560.866

Il Piemonte rispetto al totale Italia

**Presenze turisti italiani
(rapporto rispetto all'anno 2000)**

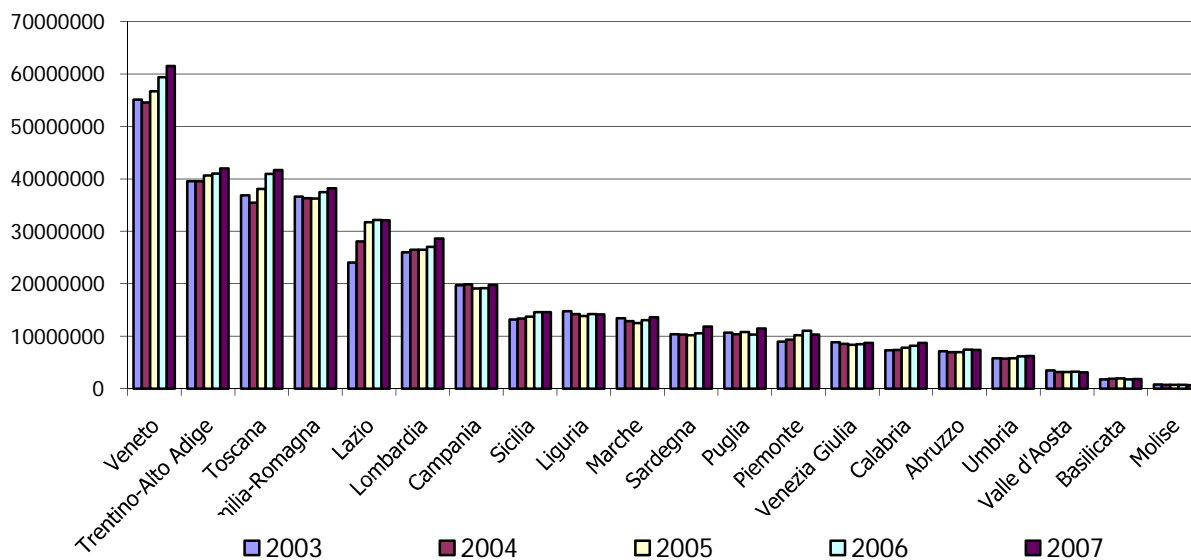


**Presenze turisti stranieri
(rapporto rispetto all'anno 2000)**



Il Piemonte rispetto alle altre regioni italiane

Presenze



Arrivi

