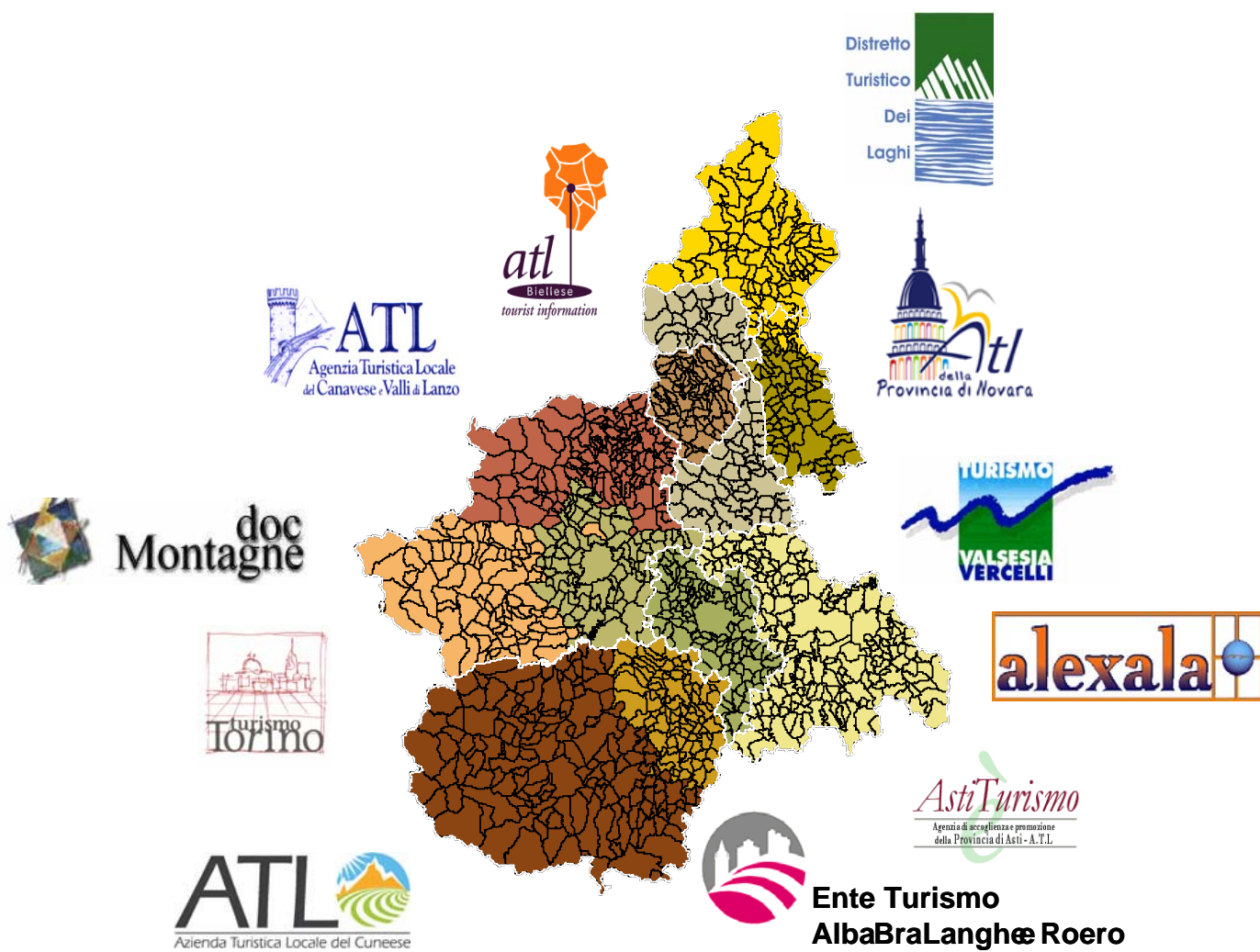
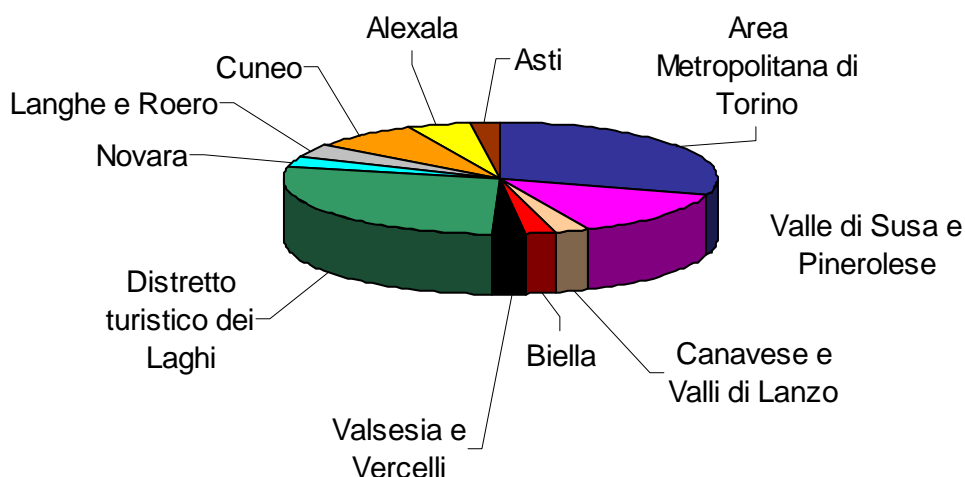


Le ATL del Piemonte



Presenze 2006 – Distribuzione nelle ATL

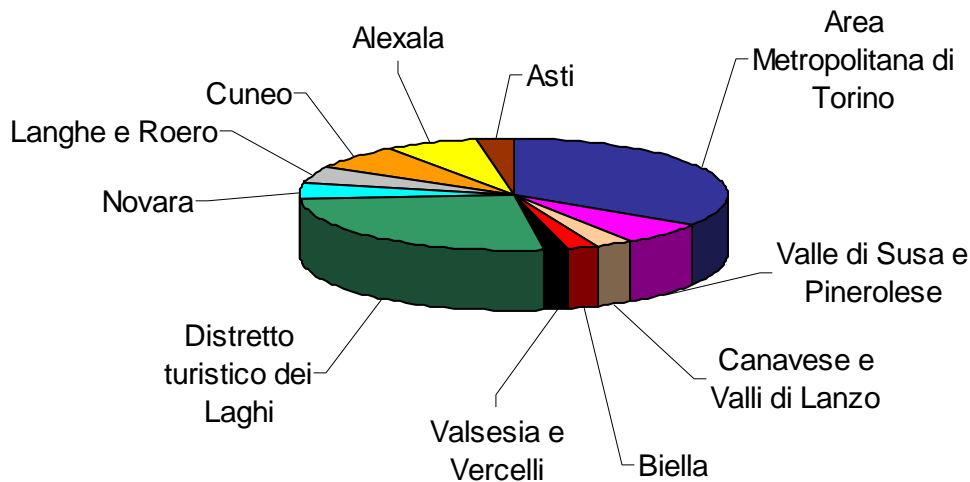
Presenze 2005 - Distribuzione nelle ATL



Totale Presenze	% Presenze	Diff. rispetto a 2005	Diff. % rispetto a 2005	ATL	ITALIA			ESTERO		
					Ext	Alb	Totale	Ext	Alb	Totale
3.331.129	30,03%	28.440	0,86%	Area Metropolitana di Torino	390.337	1.816.179	2.206.516	158.624	965.989	1.124.613
1.481.637	13,35%	274.883	22,78%	Valle di Susa e Pinerolese	518.147	283.341	801.488	98.631	581.518	680.149
286.985	2,59%	12.029	4,37%	Canavese e Valli di Lanzo	43.665	187.372	231.037	4.109	51.839	55.948
230.823	2,08%	6.946	3,10%	Biella	59.678	111.938	171.616	15.555	43.652	59.207
273.339	2,46%	-12.687	-4,44%	Valsesia e Vercelli	90.565	123.843	214.408	25.311	33.620	58.931
3.073.088	27,70%	214.301	7,50%	Distretto turistico dei Laghi	393.133	528.251	921.384	996.648	1.155.056	2.151.704
360.679	3,25%	67.152	22,88%	Novara	16.050	228.635	244.685	3.573	112.421	115.994
397.891	3,59%	103.162	35,00%	Langhe e Roero	50.972	120.447	171.419	67.598	158.874	226.472
888.822	8,01%	109.613	14,07%	Cuneo	219.066	460.905	679.971	41.216	167.635	208.851
538.572	4,85%	39.654	7,95%	Alexala	51.247	344.309	395.556	25.820	117.196	143.016
231.365	2,09%	41.647	21,95%	Asti	44.651	71.216	115.867	54.208	61.290	115.498
11.094.330	100,00%	885.140	8,67%	Totale Regionale	1.877.511	4.276.436	6.153.947	1.491.293	3.449.090	4.940.383

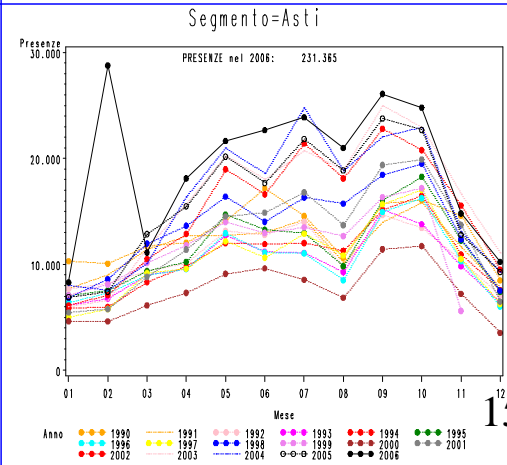
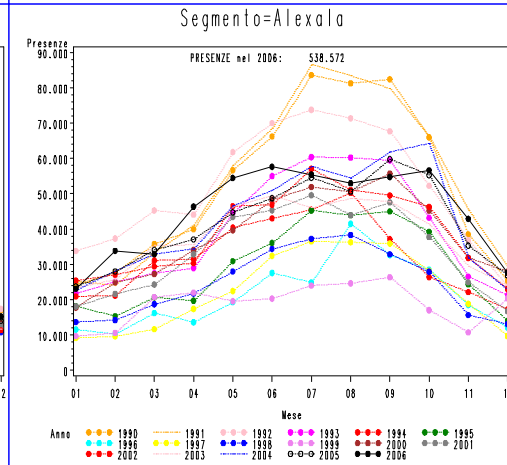
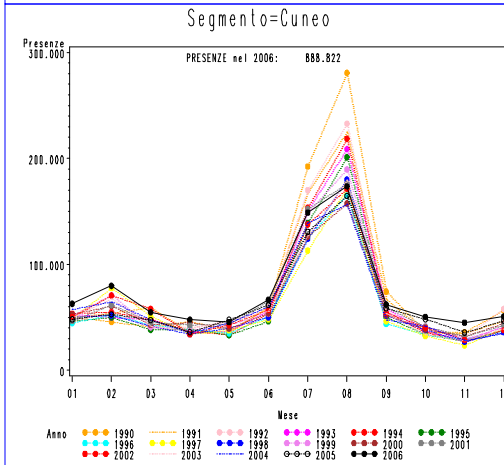
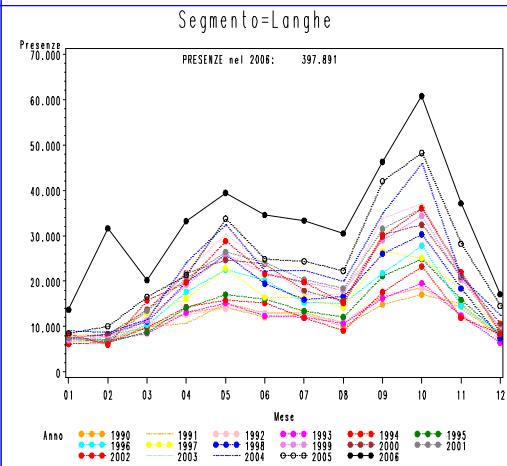
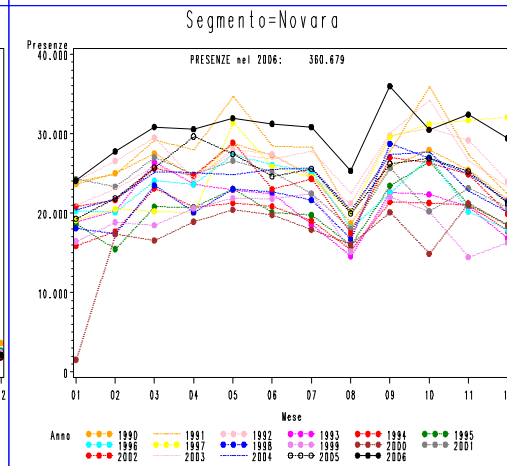
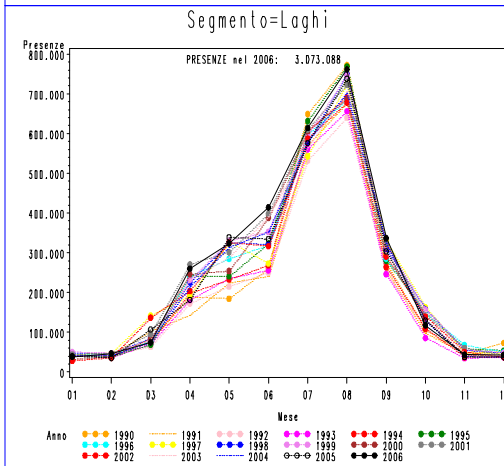
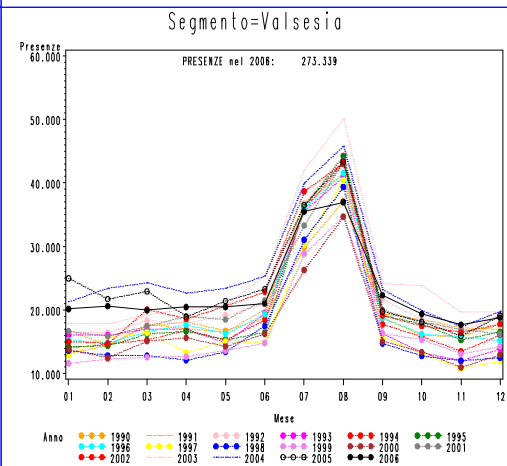
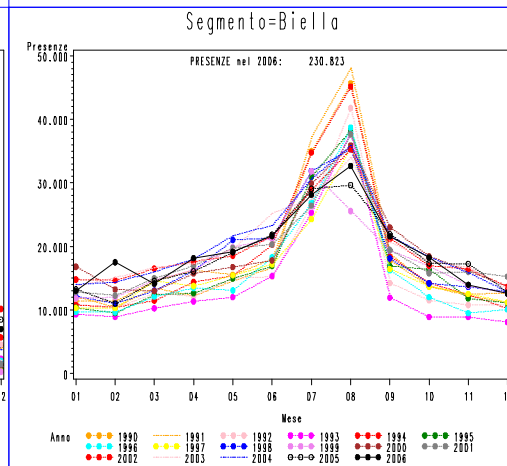
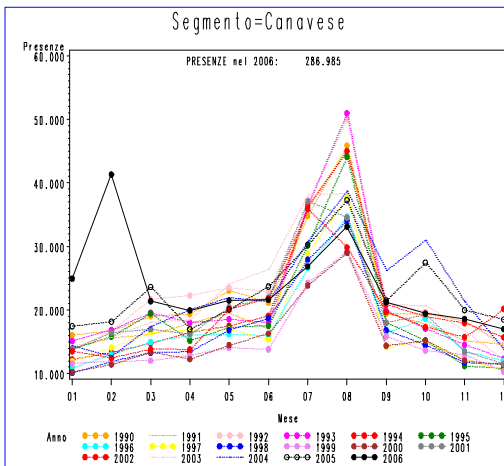
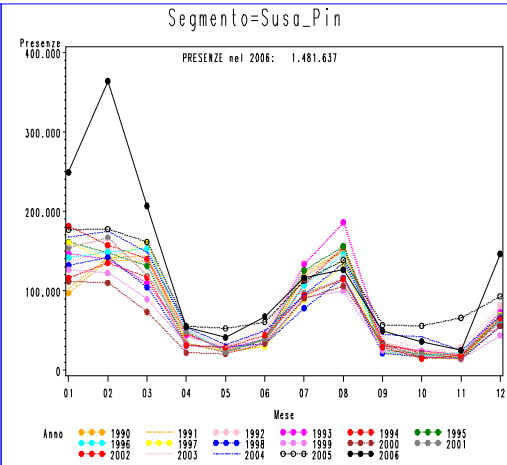
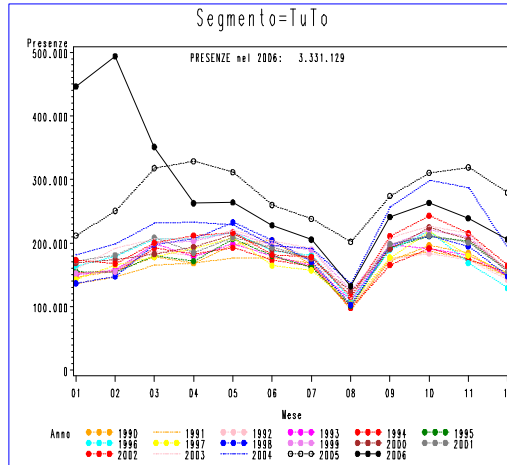
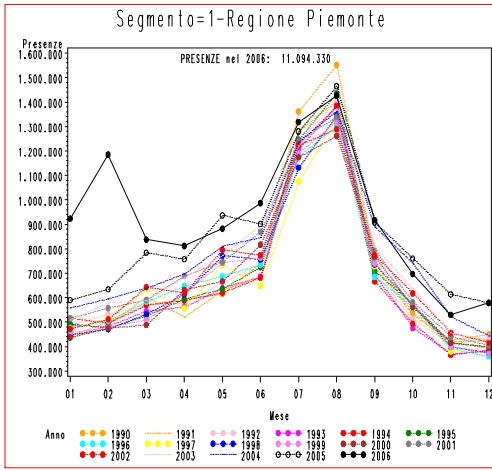
Arrivi 2006 – Distribuzione nelle ATL

Arrivi 2005 - Distribuzione nelle ATL



Totale Arrivi	% Arrivi	Diff. rispetto a 2005	Diff. % rispetto a 2005	ATL	ITALIA			ESTERO		
					Settore		Totale	Settore		Totale
					Ext	Alb		Ext	Alb	
1.128.801	34,07%	-98.491	-8,03%	Area Metropolitana di Torino	21.085	774.115	795.200	12.782	320.819	333.601
221.938	6,70%	-42.308	-16,01%	Valle di Susa e Pinerolese	82.346	64.523	146.869	9.662	65.407	75.069
94.517	2,85%	1.441	1,55%	Canavese e Valli di Lanzo	11.563	64.705	76.268	1.209	17.040	18.249
74.119	2,24%	1.565	2,16%	Biella	18.334	35.865	54.199	3.967	15.953	19.920
66.500	2,01%	176	0,27%	Valsesia e Vercelli	15.065	34.908	49.973	5.494	11.033	16.527
854.172	25,78%	53.448	6,67%	Distretto turistico dei Laghi	90.620	215.442	306.062	160.023	388.087	548.110
142.073	4,29%	29.086	25,74%	Novara	2.107	84.865	86.972	1.619	53.482	55.101
174.033	5,25%	36.818	26,83%	Langhe e Roero	19.725	65.681	85.406	22.102	66.525	88.627
236.931	7,15%	9.497	4,18%	Cuneo	50.110	124.295	174.405	11.973	50.553	62.526
225.655	6,81%	22.151	10,88%	Alexala	17.846	142.597	160.443	8.133	57.079	65.212
94.769	2,86%	10.727	12,76%	Asti	16.355	35.462	51.817	16.121	26.831	42.952
3.313.508	100,00%	24.110	0,73%	Totale Regionale	345.156	1.642.458	1.987.614	253.085	1.072.809	1.325.894

A.T.L. – Andamenti Annuali Presenze



A.T.L. – Andamenti Annuali Arrivi

