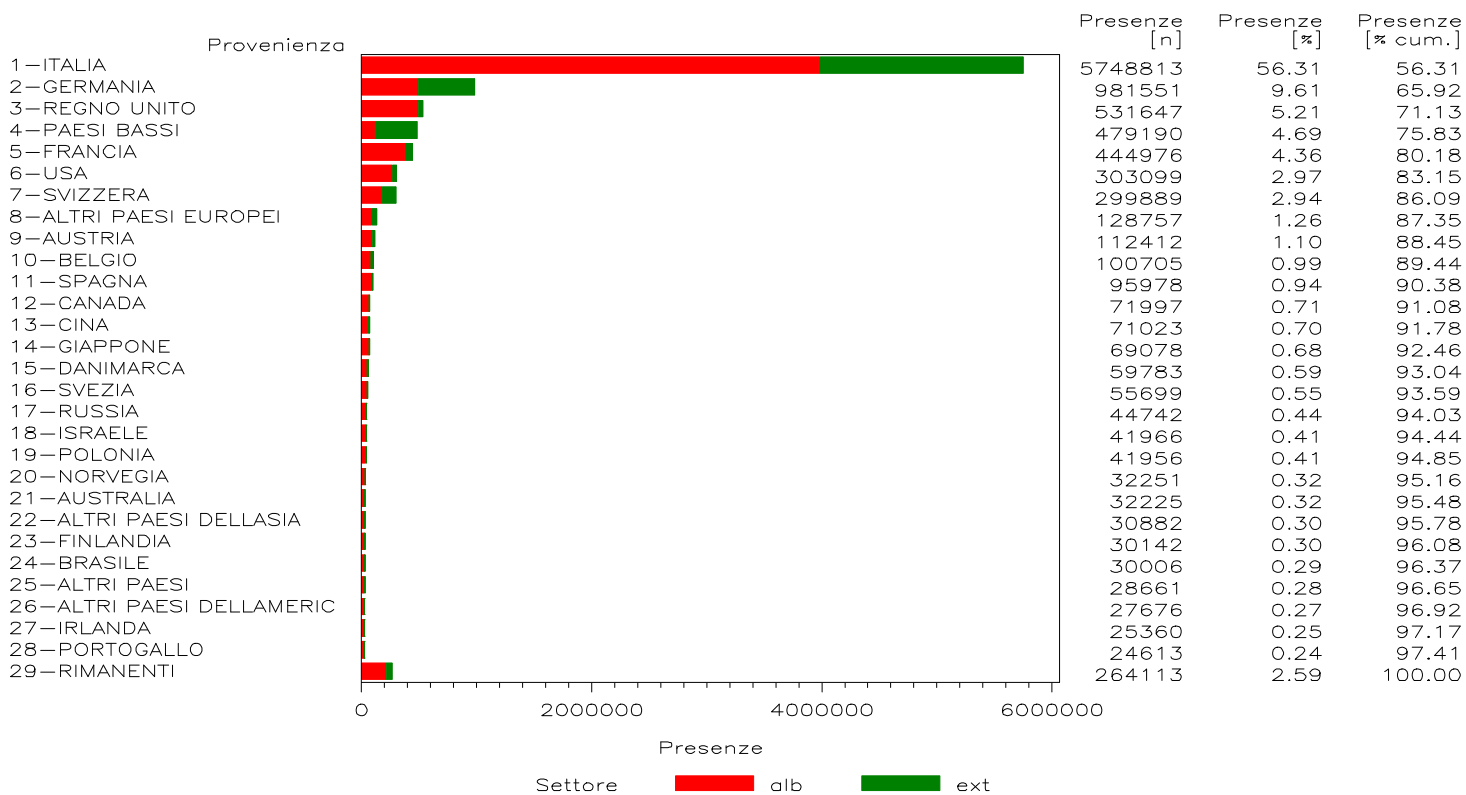
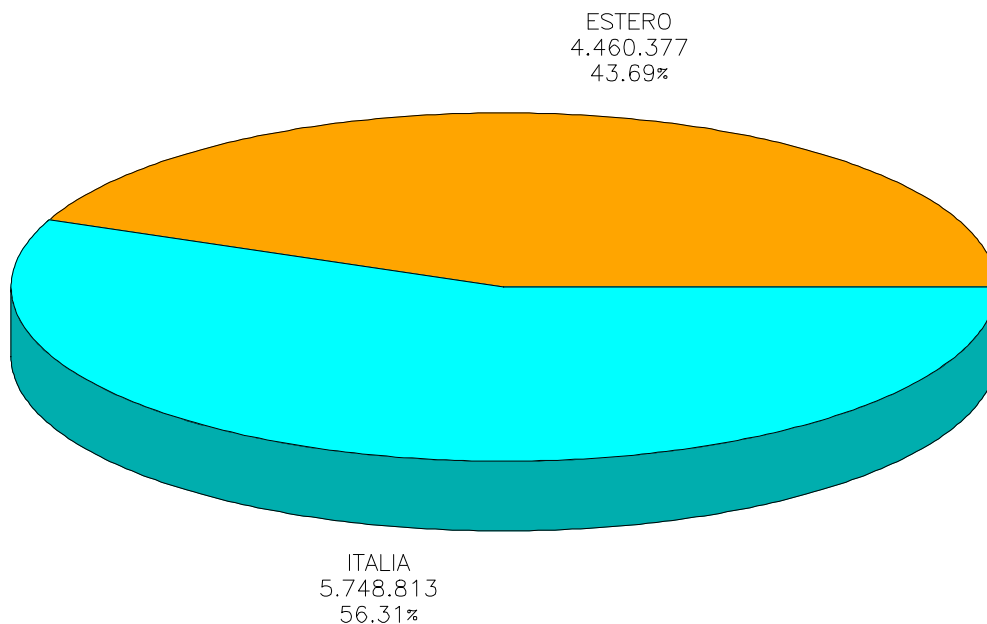


# REGIONE PIEMONTE

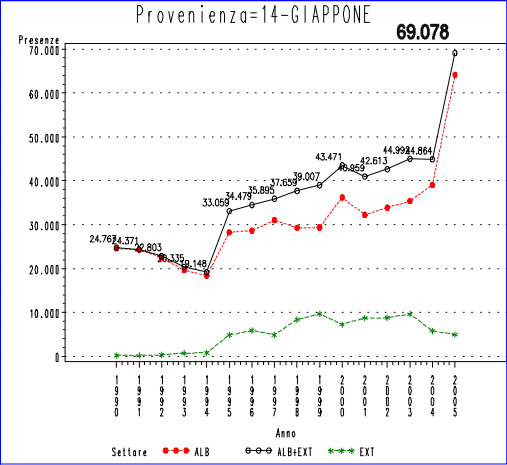
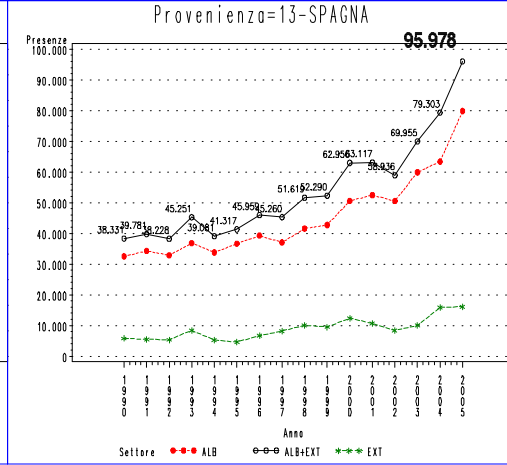
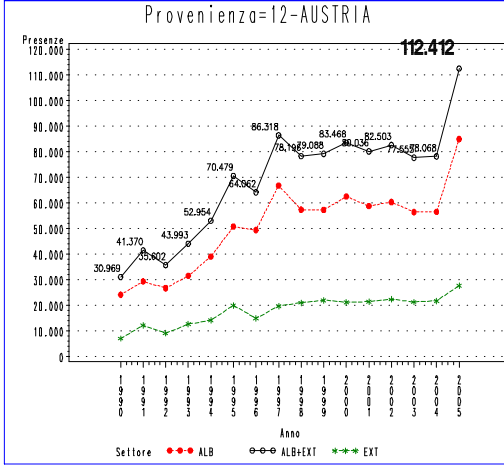
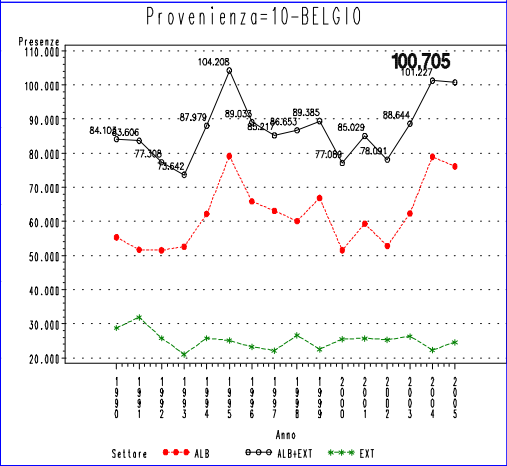
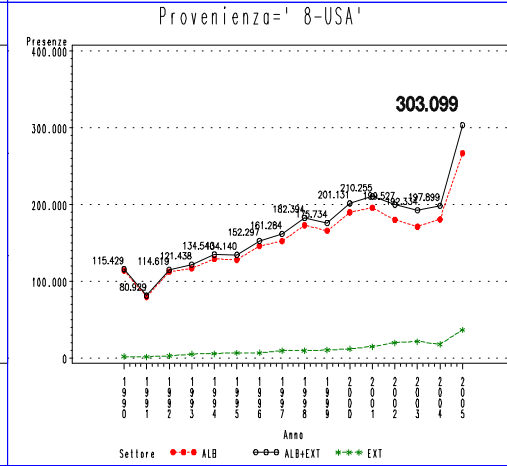
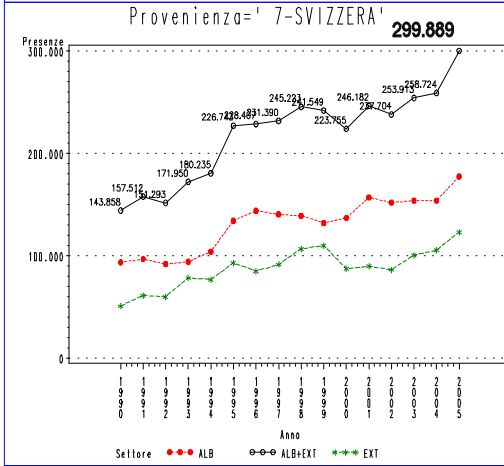
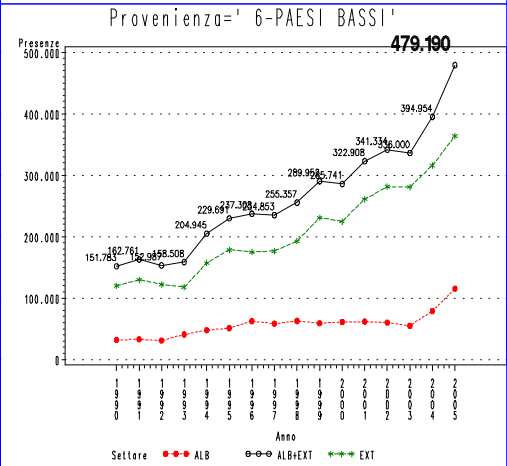
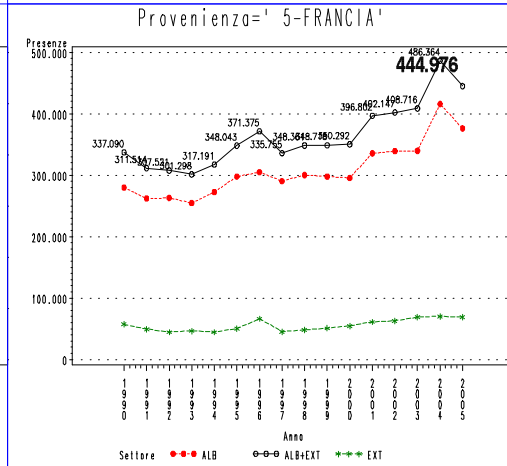
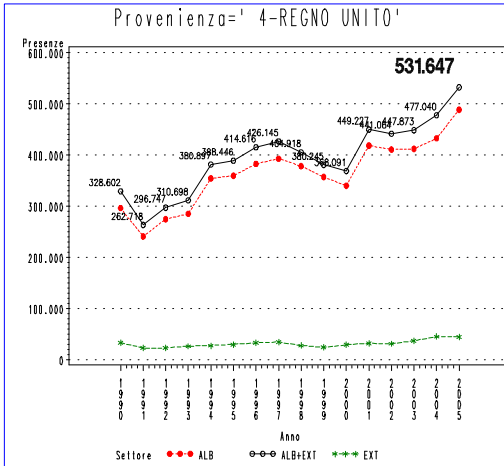
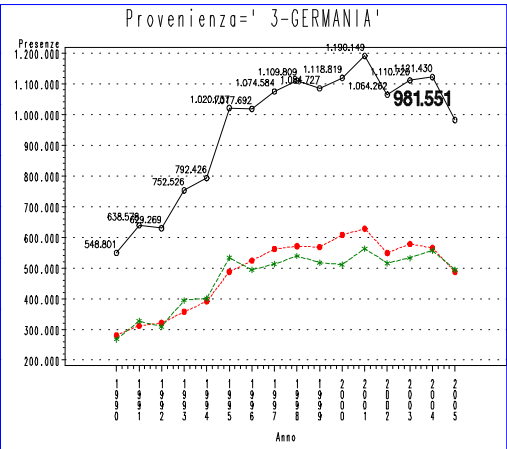
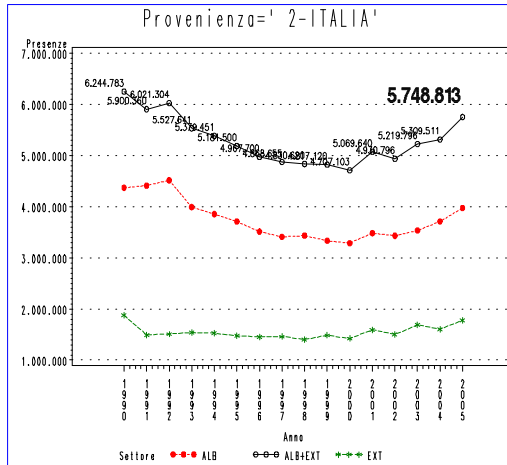
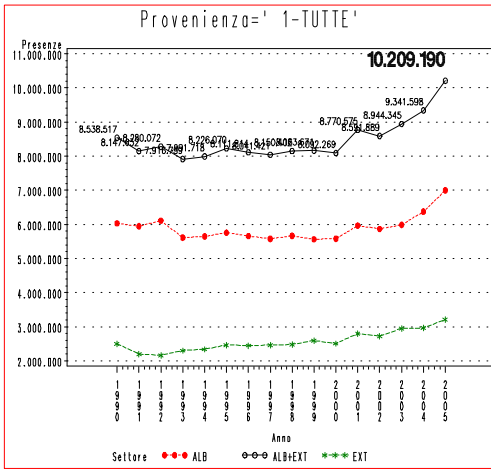
ANNO 2005

Presenze totali 2005: 10.209.190

Differenza Presenze rispetto al 2004: + 867.592 (+ 9.29 %)



# REGIONE PIEMONTE – Mercati di provenienza – Presenze

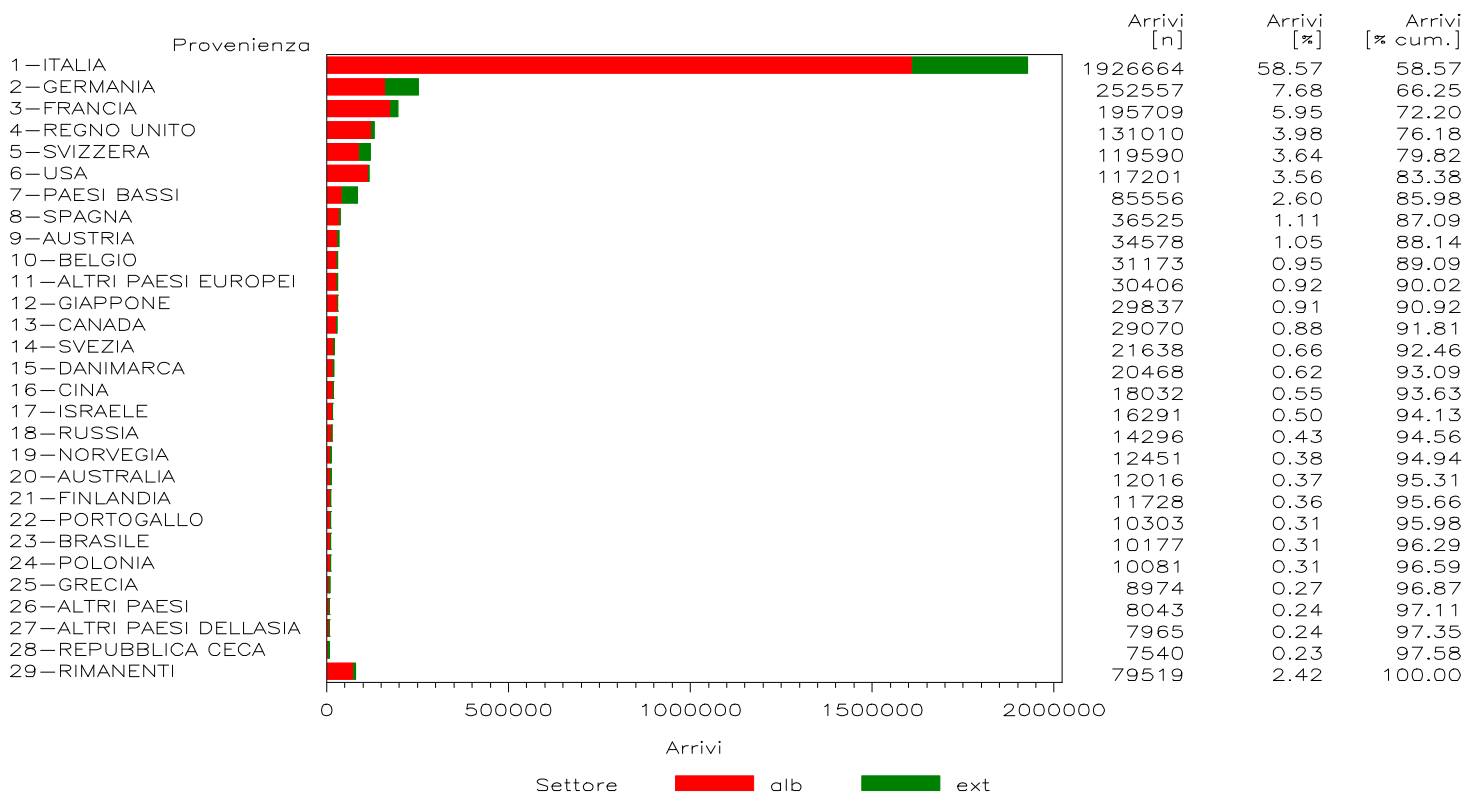
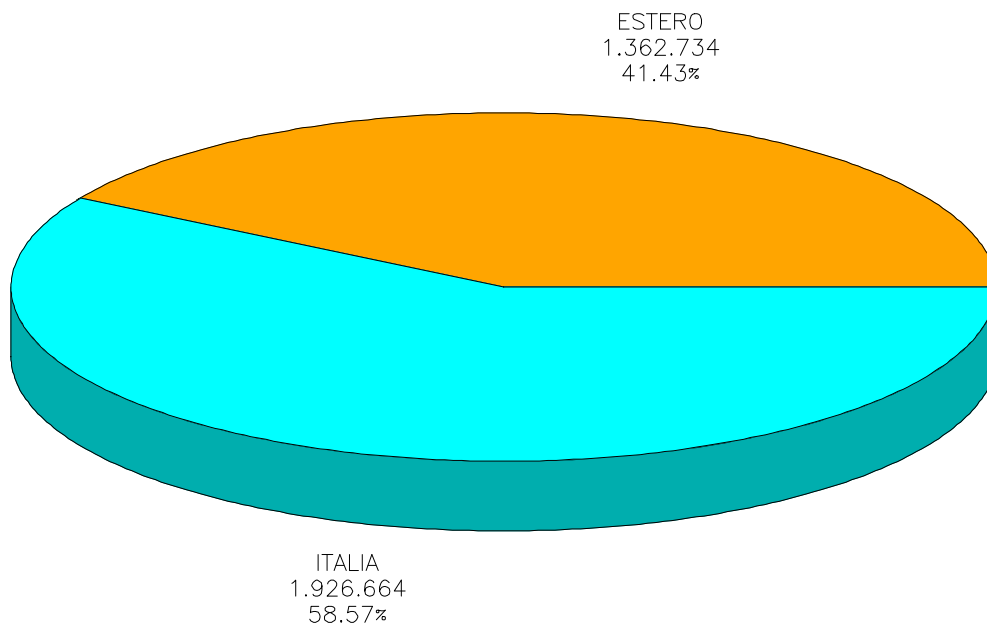


# REGIONE PIEMONTE

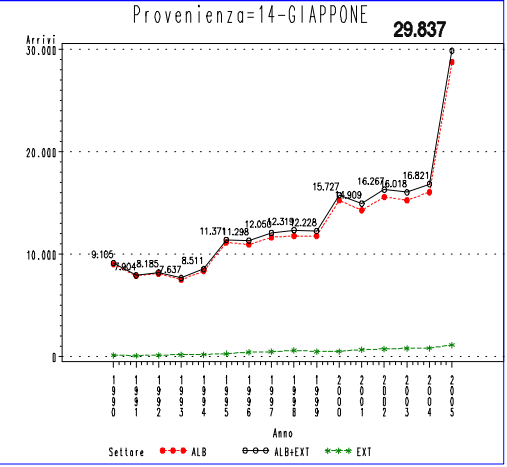
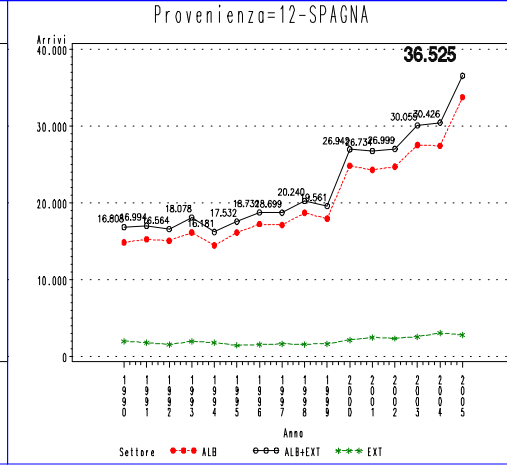
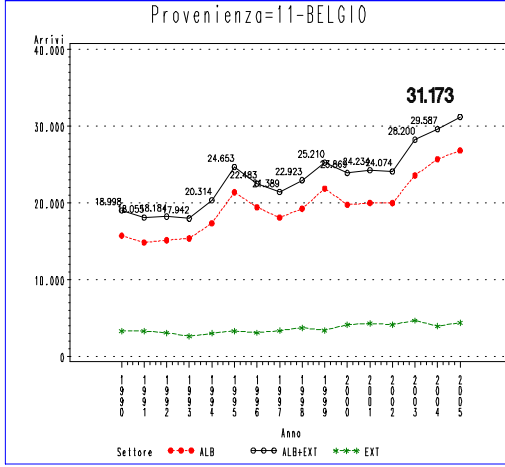
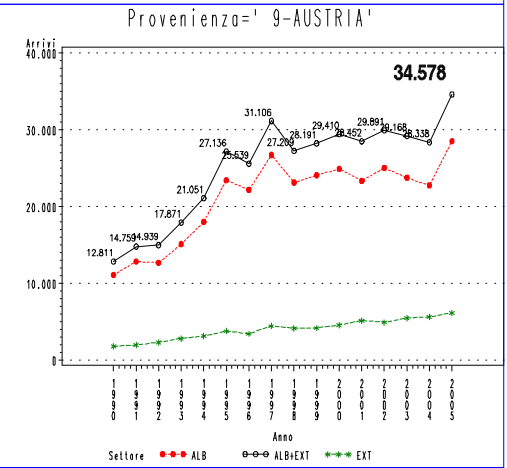
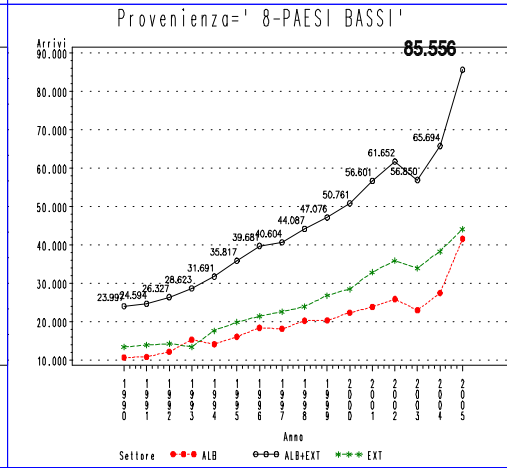
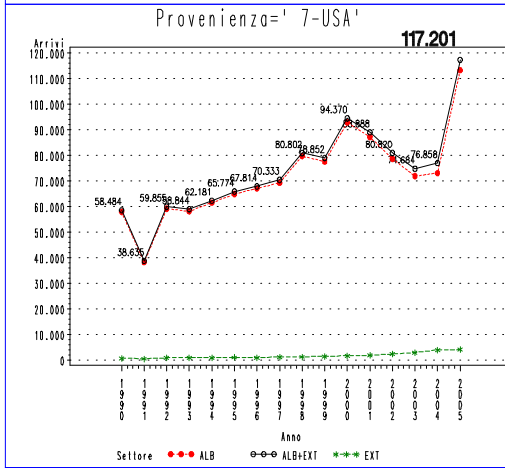
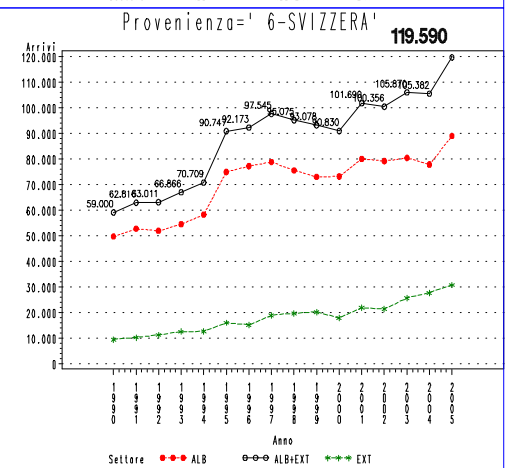
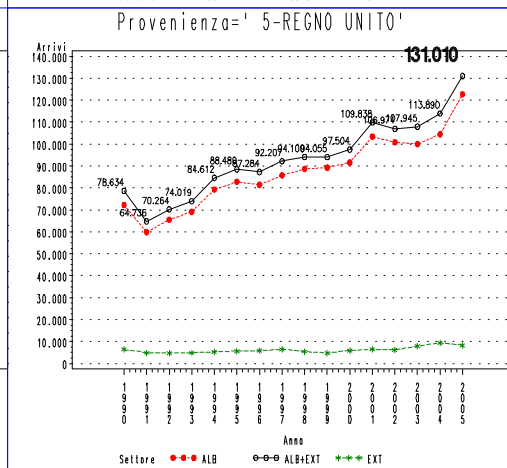
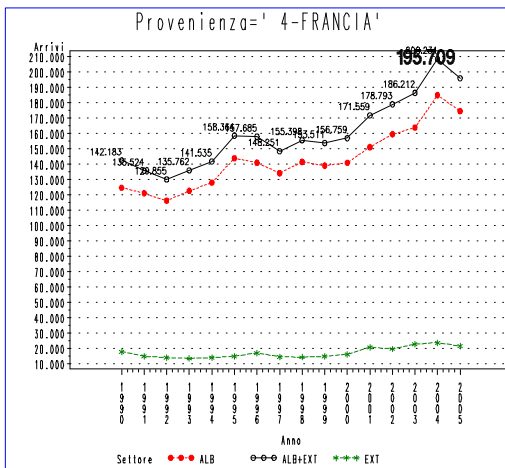
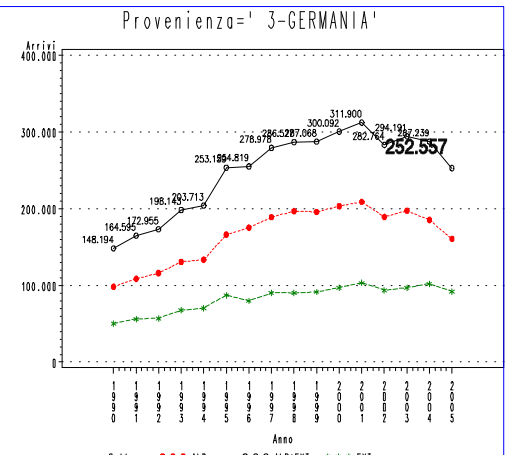
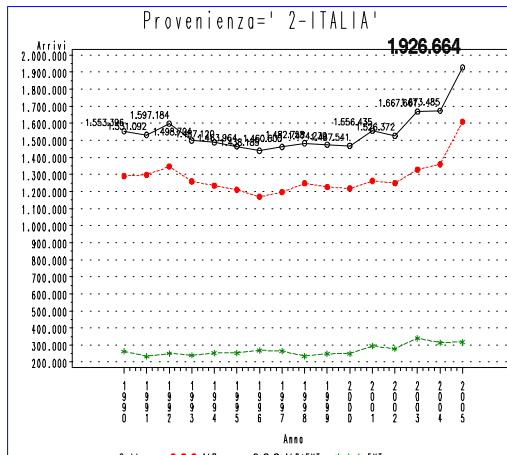
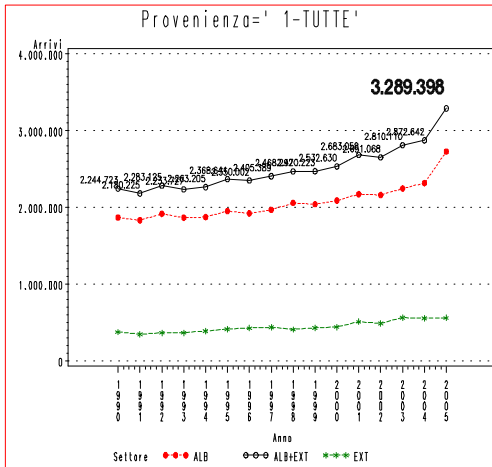
ANNO 2005

Arrivi totali 2005: 3.289.398

Differenza Arrivi rispetto al 2004: + 416.756 (+ 14.51 %)



# REGIONE PIEMONTE – Mercati di provenienza – Arrivi



# OFFERTA REGIONE PIEMONTE

N. ESERCIZI

N. LETTI

