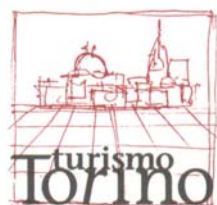
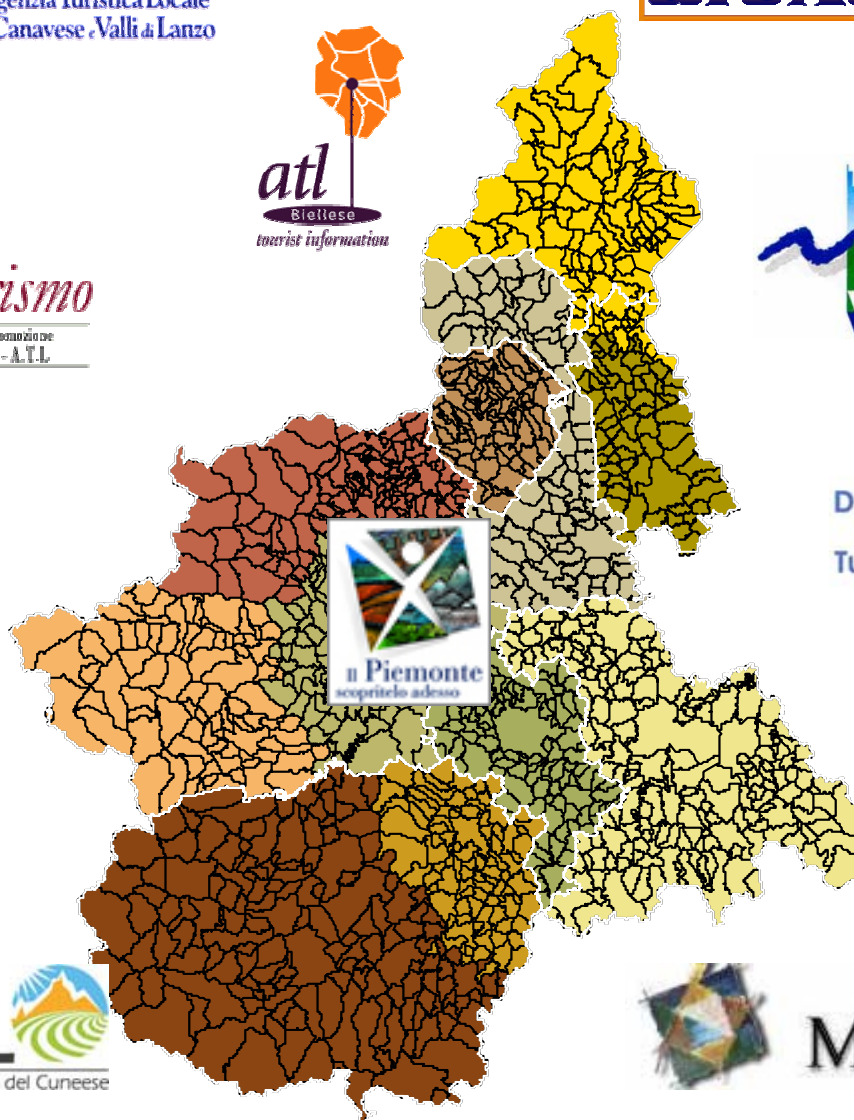


Le ATL del Piemonte

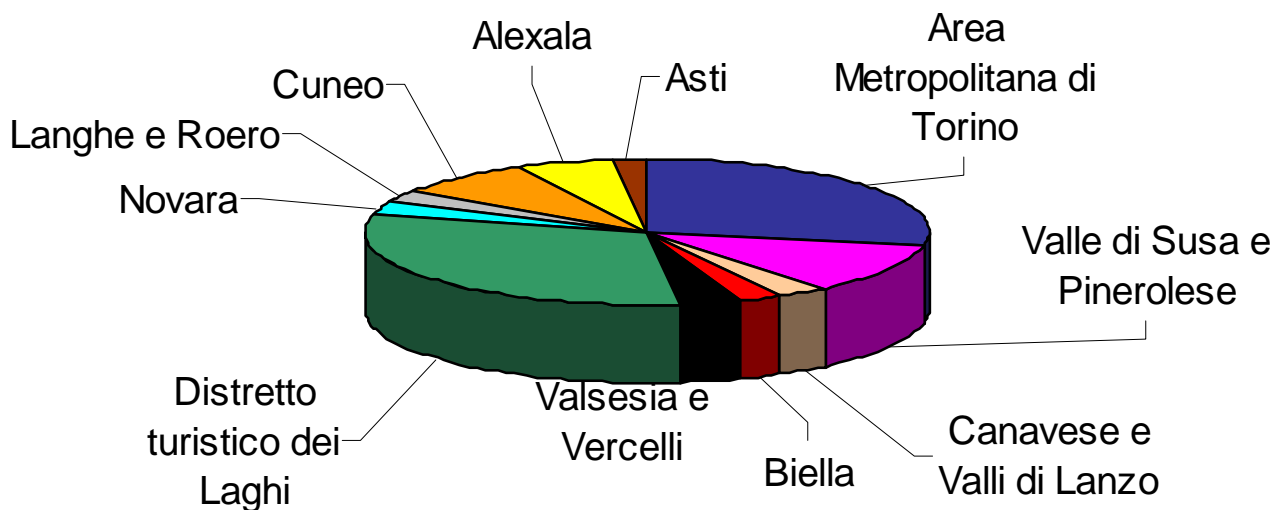


Ente Turismo
Alba Bra Langhe e Roero



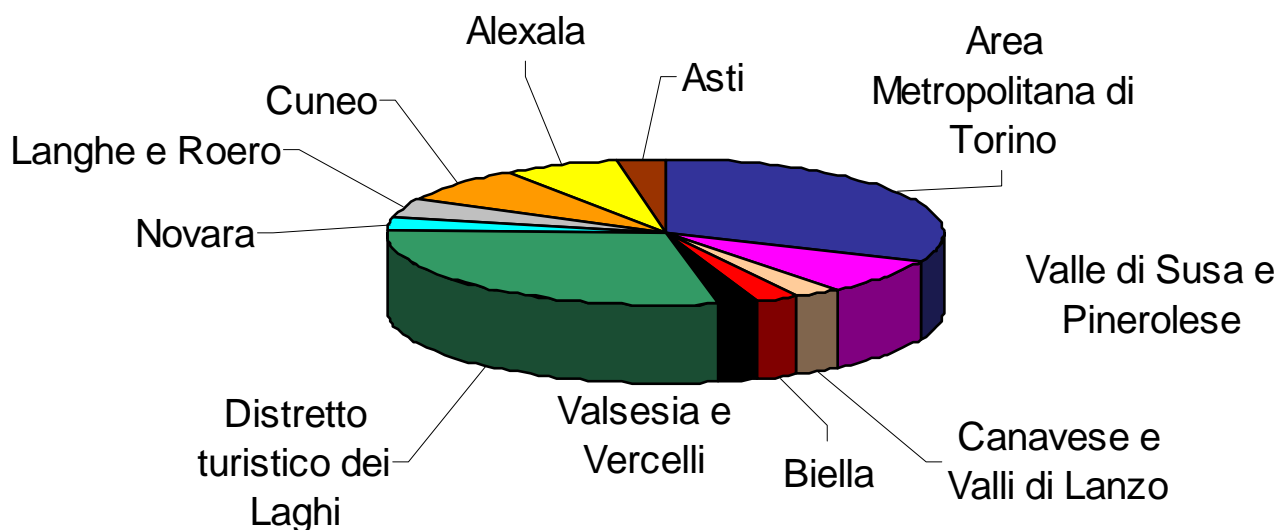
Agenzia di Accoglienza e Promozione Turistica Locale
della Provincia di Novara

Presenze 2004 - Distribuzione nelle ATL



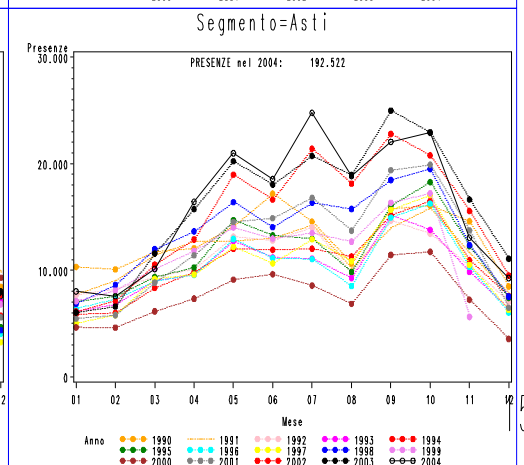
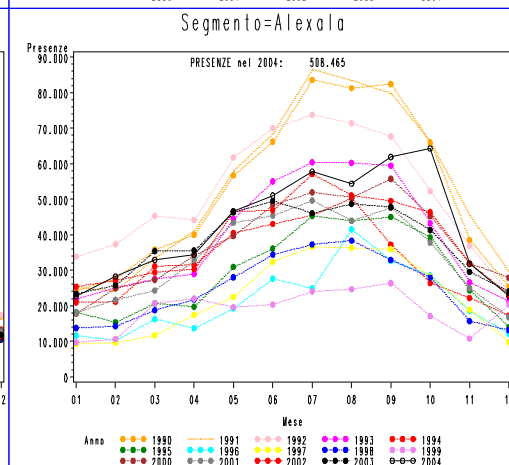
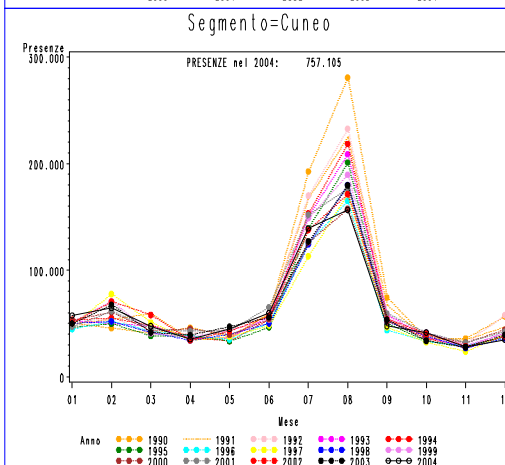
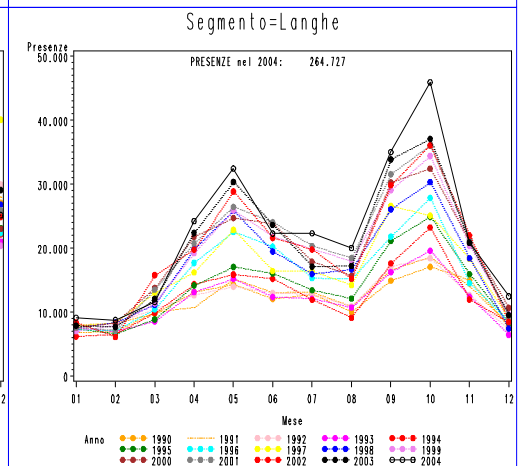
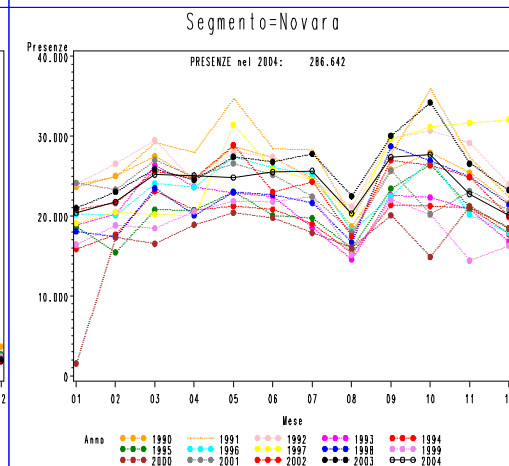
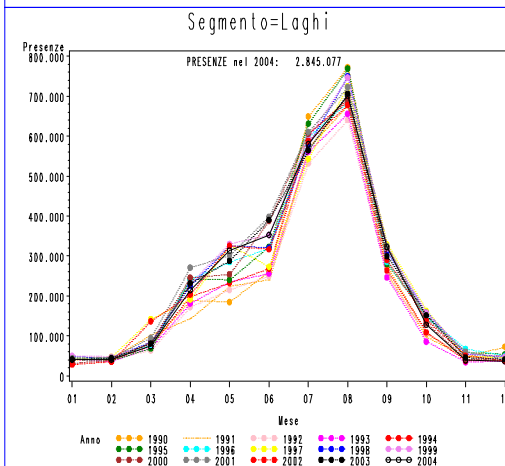
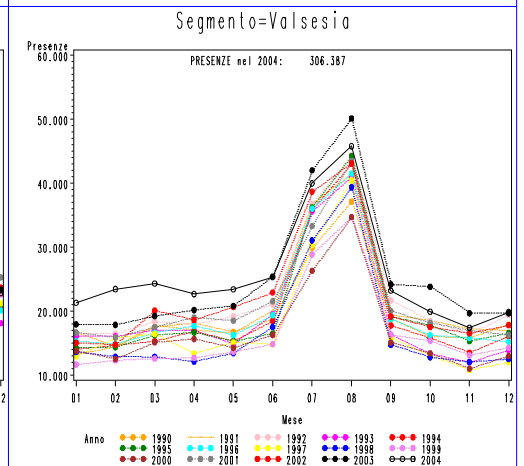
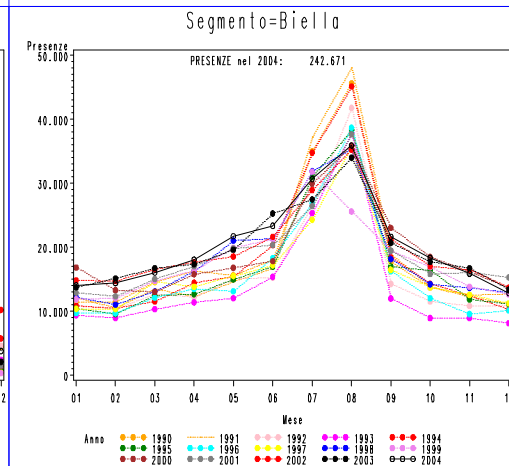
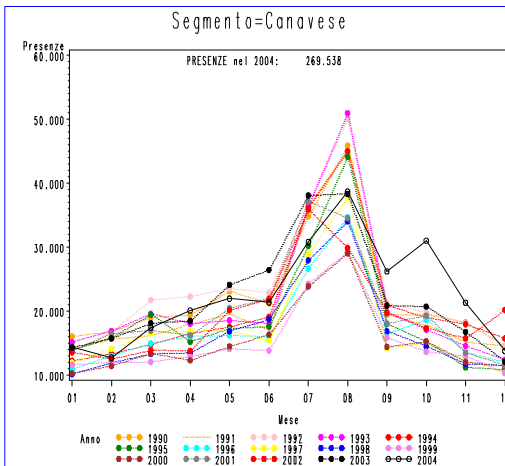
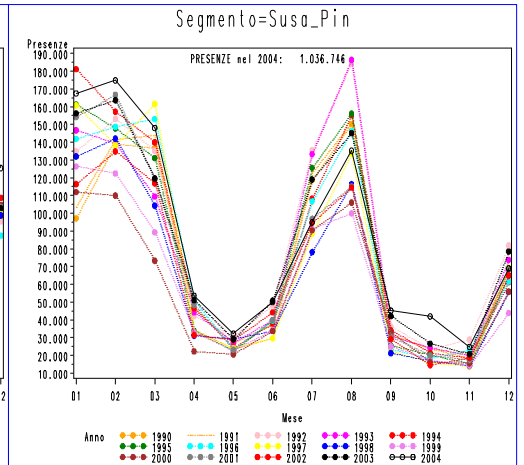
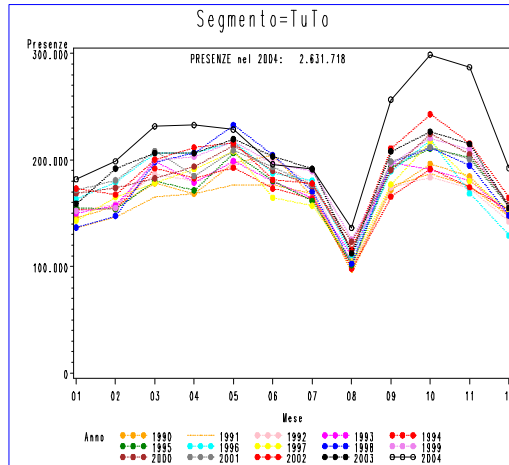
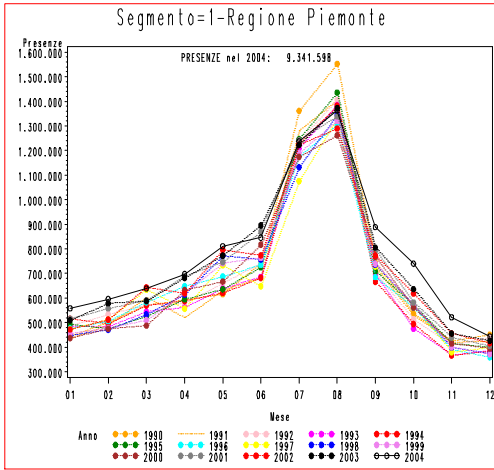
Totale Presenze	% Presenze	Diff. rispetto a 2003	Diff. % rispetto a 2003	ATL	ITALIA			ESTERO		
					Settore		Totale	Settore		Totale
					Alb	Ext		Alb	Ext	
2.631.718	28,17%	336.527	14,66%	Area Metropolitana di Torino	1.311.739	402.246	1.713.985	750.391	167.342	917.733
1.036.746	11,10%	34.340	3,43%	Valle di Susa e Pinerolese	378.686	275.608	654.294	333.957	48.495	382.452
269.538	2,89%	5.816	2,21%	Canavese e Valli di Lanzo	166.534	40.320	206.854	51.270	11.414	62.684
242.671	2,60%	5.147	2,17%	Biella	128.938	56.372	185.310	41.965	15.396	57.361
306.387	3,28%	5.621	1,87%	Valsesia e Vercelli	139.365	116.055	255.420	31.387	19.580	50.967
2.845.077	30,46%	-38.997	-1,35%	Distretto turistico dei Laghi	477.165	374.777	851.942	1.027.461	965.674	1.993.135
286.642	3,07%	-26.312	-8,41%	Novara	207.350	15.176	222.526	60.715	3.401	64.116
264.727	2,83%	25.427	10,63%	Langhe e Roero	75.405	31.822	107.227	117.266	40.234	157.500
757.105	8,10%	-4.751	-0,62%	Cuneo	382.825	220.130	602.955	122.644	31.506	154.150
508.465	5,44%	55.338	12,21%	Alexala	379.152	29.820	408.972	84.805	14.688	99.493
192.522	2,06%	-903	-0,47%	Asti	59.482	40.544	100.026	47.086	45.410	92.496
9.341.598	100,00%	397.253	4,44%	Totale Regionale	3.706.641	1.602.870	5.309.511	2.668.947	1.363.140	4.032.087

Arrivi 2004 - Distribuzione nelle ATL



Totale Arrivi	% Arrivi	Diff. rispetto a 2003	Diff. % rispetto a 2003	ATL	ITALIA			ESTERO		
					Settore		Totale	Settore		Totale
					Alb	Ext		Alb	Ext	
898.719	31,29%	56.792	6,75%	Area Metropolitana di Torino	555.301	26.617	581.918	301.471	15.330	316.801
232.118	8,08%	-4.265	-1,80%	Valle di Susa e Pinerolese	88.118	68.056	156.174	63.061	12.883	75.944
78.710	2,74%	-4.904	-5,87%	Canavese e Valli di Lanzo	47.707	9.911	57.618	17.707	3.385	21.092
74.198	2,58%	1.275	1,75%	Biella	35.788	19.847	55.635	15.182	3.381	18.563
64.815	2,26%	-4.042	-5,87%	Valsesia e Vercelli	33.817	14.583	48.400	10.858	5.557	16.415
811.965	28,27%	-10.210	-1,24%	Distretto turistico dei Laghi	212.024	85.842	297.866	358.104	155.995	514.099
89.171	3,10%	-2.392	-2,61%	Novara	60.367	1.436	61.803	26.520	848	27.368
127.928	4,45%	12.892	11,21%	Langhe e Roero	45.122	14.450	59.572	52.618	15.738	68.356
224.048	7,80%	-2.083	-0,92%	Cuneo	117.129	50.342	167.471	44.225	12.352	56.577
187.635	6,53%	14.239	8,21%	Alexala	131.087	7.799	138.886	44.601	4.148	48.749
83.335	2,90%	5.230	6,70%	Asti	32.866	15.276	48.142	22.106	13.087	35.193
2.872.642	100,00%	62.532	2,23%	Totale Regionale	1.359.326	314.159	1.673.485	956.453	242.704	1.199.157

A.T.L. – Andamenti Annuali Presenze



A.T.L. – Andamenti Annuali Arrivi

