

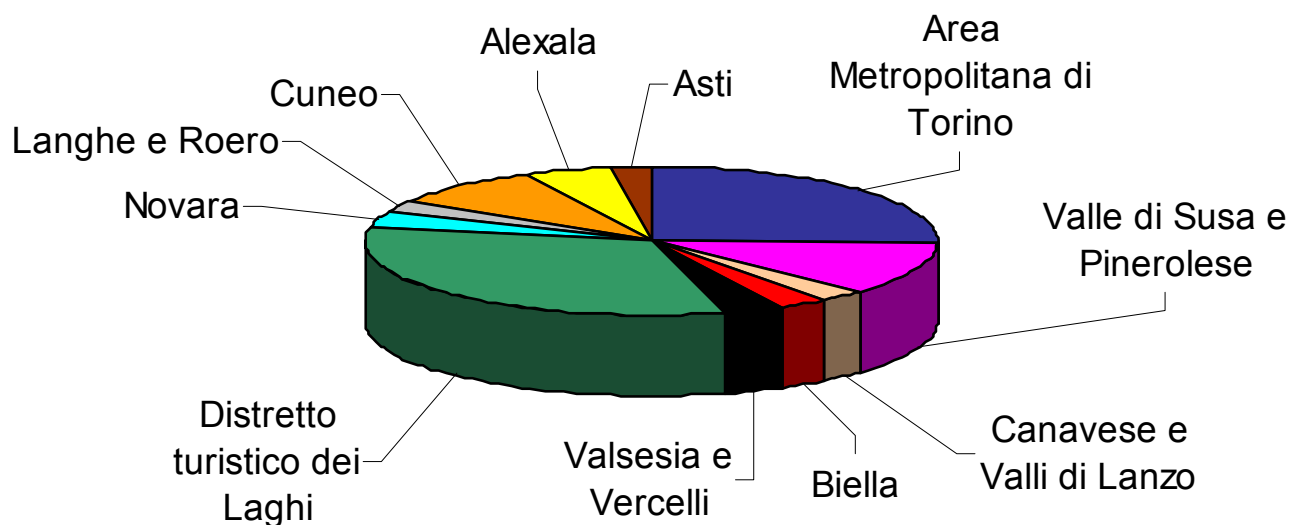
Le ATL del Piemonte



Ente Turismo
Alba Bra Langhe e Roero

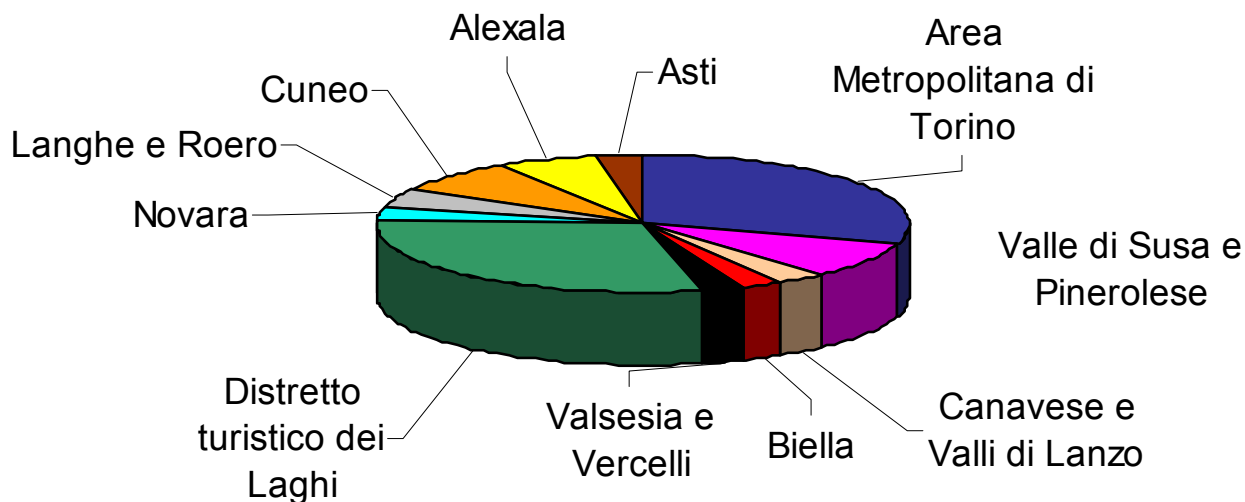


Presenze 2003 - Distribuzione nelle ATL



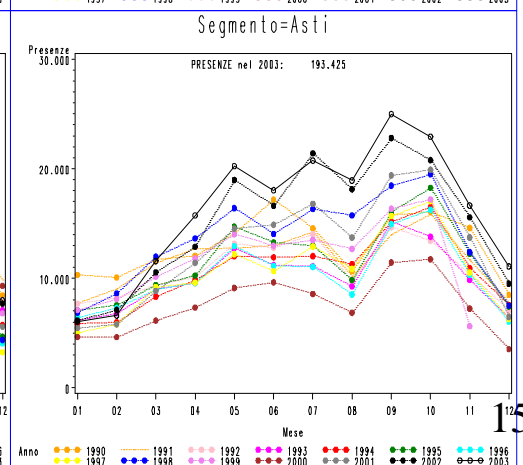
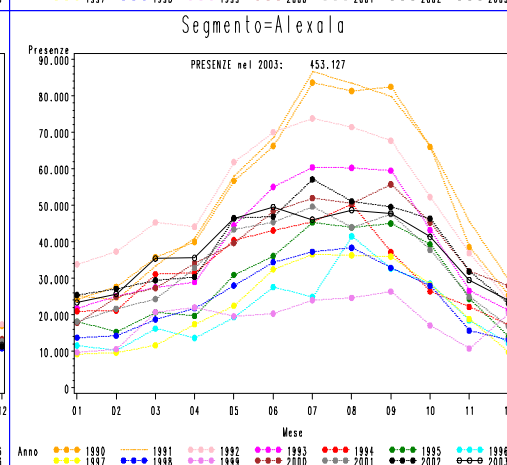
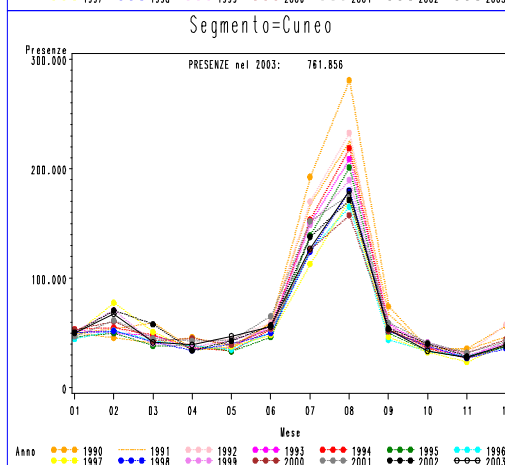
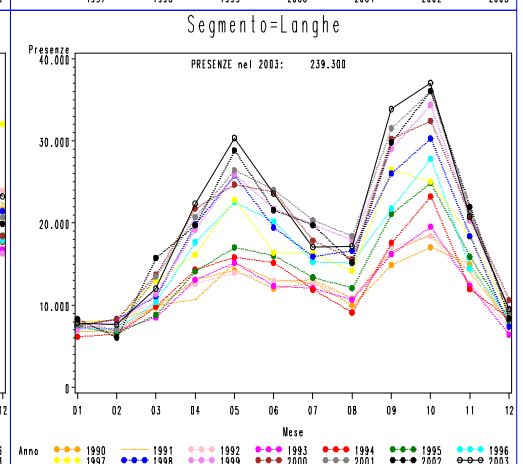
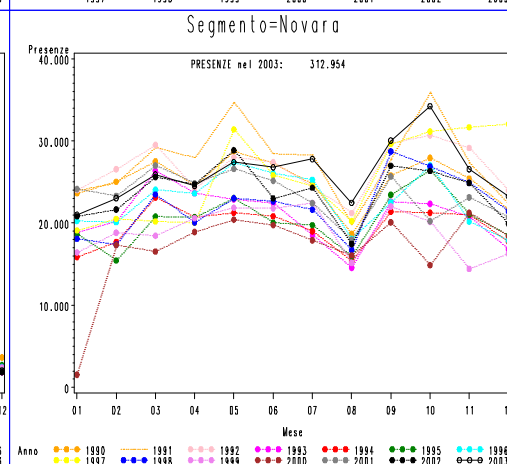
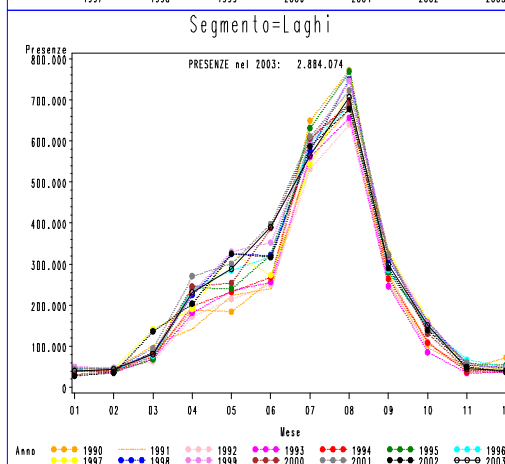
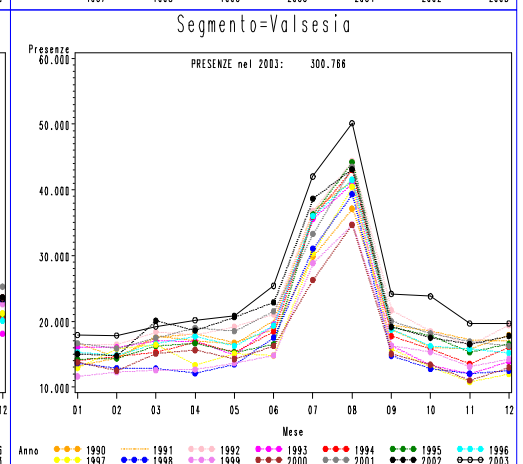
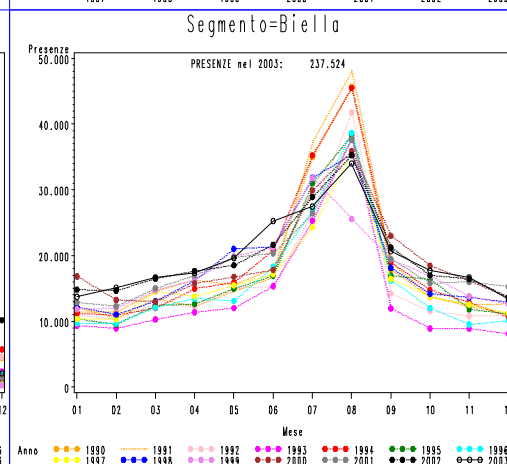
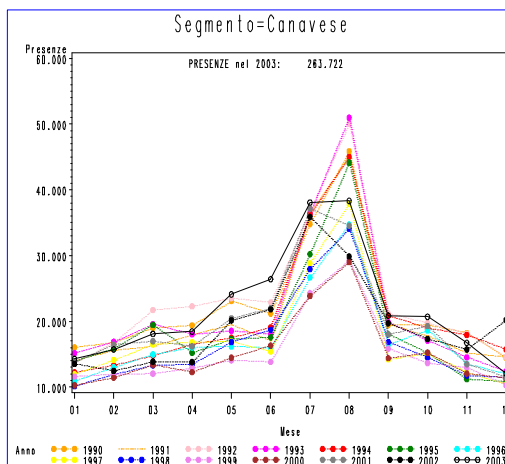
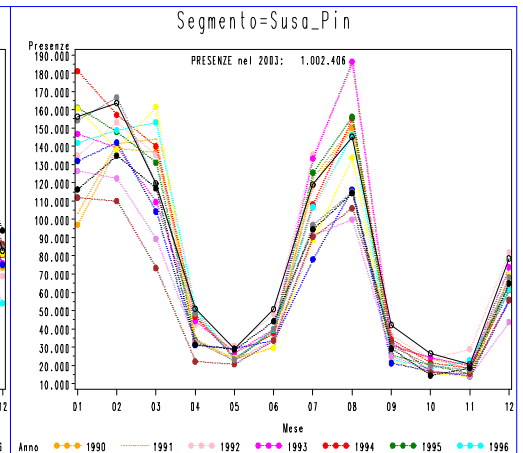
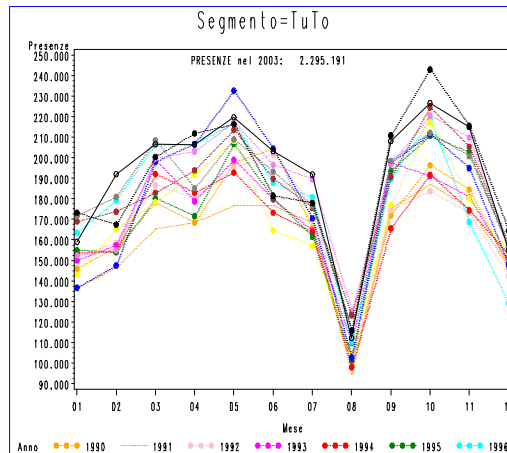
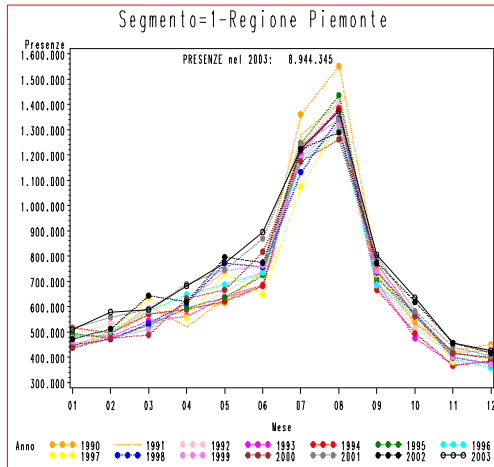
Totale Presenze	% Presenze	Diff. rispetto a 2002	Diff. % rispetto a 2002	ATL	ITALIA			ESTERO		
					Settore		Totale	Settore		Totale
					Alb	Ext		Alb	Ext	
2,295,191	25.66%	17,292	0.76%	Area Metropolitana di Torino	1,167,875	406,848	1,574,723	574,653	145,815	720,468
1,002,406	11.21%	194,178	24.03%	Valle di Susa e Pinerolese	361,140	316,735	677,875	277,674	46,857	324,531
263,722	2.95%	29,512	12.60%	Canavese e Valli di Lanzo	155,705	58,700	214,405	43,267	6,050	49,317
237,524	2.66%	1,305	0.55%	Biella	124,438	64,451	188,889	39,065	9,570	48,635
300,766	3.36%	36,110	13.64%	Valsesia e Vercelli	158,793	95,374	254,167	30,020	16,579	46,599
2,884,074	32.24%	56,989	2.02%	Distretto turistico dei Laghi	506,759	418,023	924,782	1,035,059	924,233	1,959,292
312,954	3.50%	28,521	10.03%	Novara	221,234	10,819	232,053	78,528	2,373	80,901
239,300	2.68%	7,827	3.38%	Langhe e Roero	71,088	23,471	94,559	110,137	34,604	144,741
761,856	8.52%	-21,132	-2.70%	Cuneo	381,341	232,425	613,766	119,427	28,663	148,090
453,127	5.07%	-11,212	-2.41%	Alexala	320,113	28,980	349,093	89,006	15,028	104,034
193,425	2.16%	13,066	7.24%	Asti	62,320	33,164	95,484	60,911	37,030	97,941
8,944,345	100.00%	352,456	4.10%	Totale Regionale	3,530,806	1,688,990	5,219,796	2,457,747	1,266,802	3,724,549

Arrivi 2003 - Distribuzione nelle ATL



Totale Arrivi	% Arrivi	Diff. rispetto a 2002	Diff. % rispetto a 2002	ATL	ITALIA			ESTERO		
					Settore		Totale	Settore		Totale
					Alb	Ext		Alb	Ext	
841,927	29.96%	55,340	7.04%	Area Metropolitana di Torino	539,265	27,696	566,961	261,497	13,469	274,966
236,383	8.41%	41,566	21.34%	Valle di Susa e Pinerolese	89,969	81,825	171,794	54,145	10,444	64,589
83,614	2.98%	14,971	21.81%	Canavese e Valli di Lanzo	47,810	15,094	62,904	18,167	2,543	20,710
72,923	2.60%	1,289	1.80%	Biella	35,375	20,313	55,688	14,417	2,818	17,235
68,857	2.45%	12,193	21.52%	Valsesia e Vercelli	35,815	16,851	52,666	10,536	5,655	16,191
822,175	29.26%	30,047	3.79%	Distretto turistico dei Laghi	217,265	89,246	306,511	365,212	150,452	515,664
91,563	3.26%	-2,896	-3.07%	Novara	62,008	1,089	63,097	27,910	556	28,466
115,036	4.09%	3,690	3.31%	Langhe e Roero	39,754	10,962	50,716	50,975	13,345	64,320
226,131	8.05%	9,627	4.45%	Cuneo	113,983	56,158	170,141	45,081	10,909	55,990
173,396	6.17%	-6,204	-3.45%	Alexala	116,836	7,380	124,216	45,439	3,741	49,180
78,105	2.78%	-581	-0.74%	Asti	30,041	12,926	42,967	23,985	11,153	35,138
2,810,110	100.00%	159,042	6.00%	Totale Regionale	1,328,121	339,540	1,667,661	917,364	225,085	1,142,449

A.T.L. – Andamenti Annuali Presenze



A.T.L. – Andamenti Annuali Arrivi

