

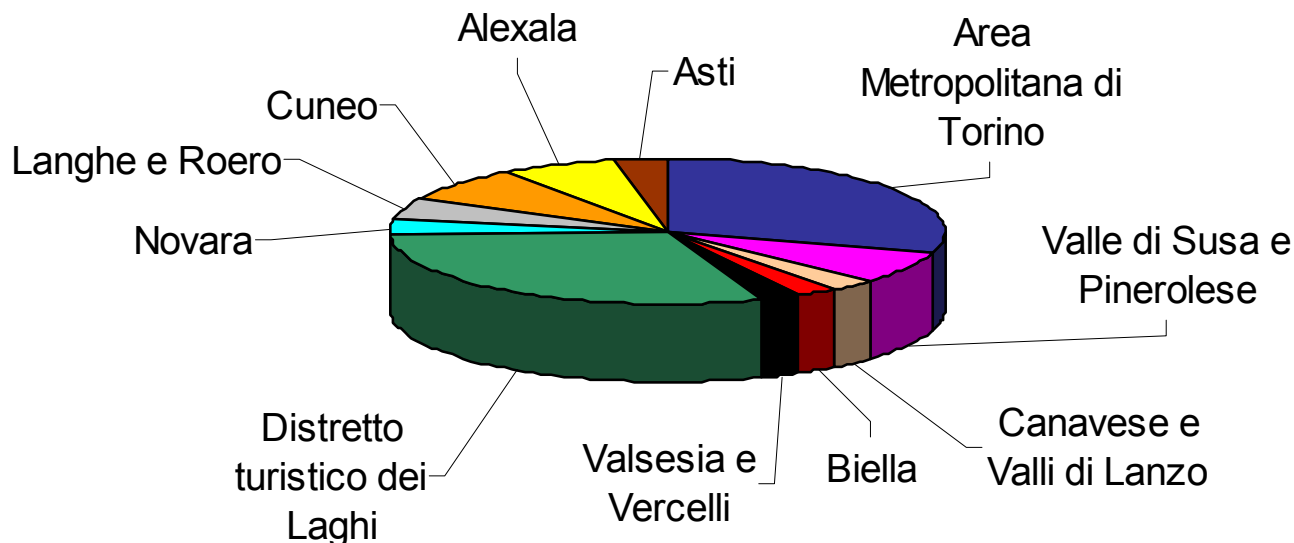
Le ATL del Piemonte



Ente Turismo
Alba Bra Langhe e Roero

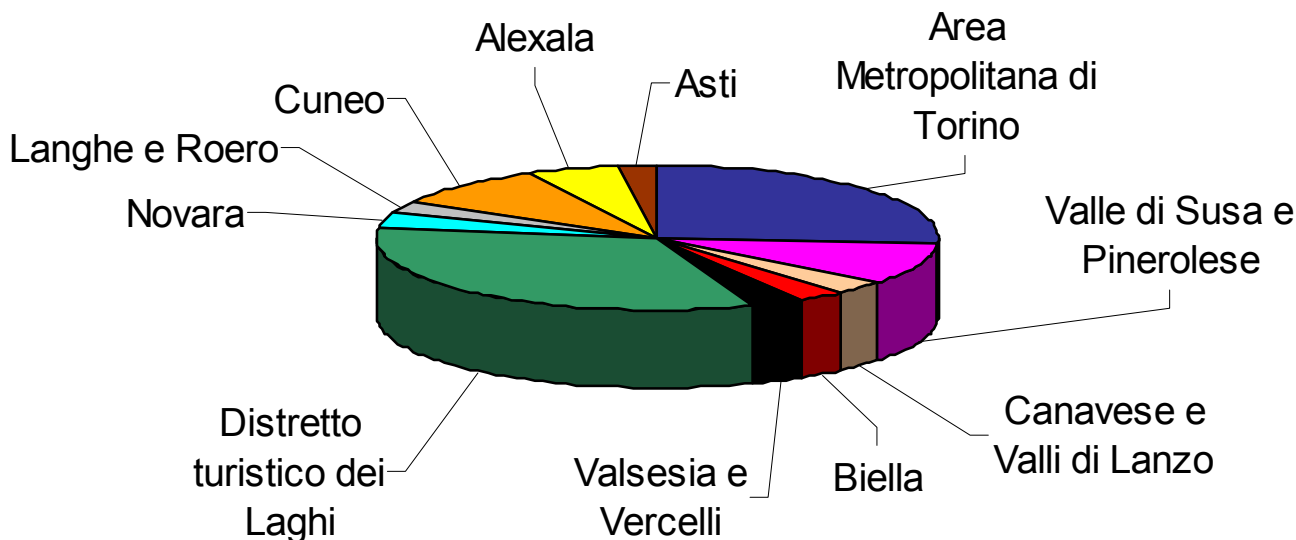


Arrivi 2002 - Distribuzione nelle ATL



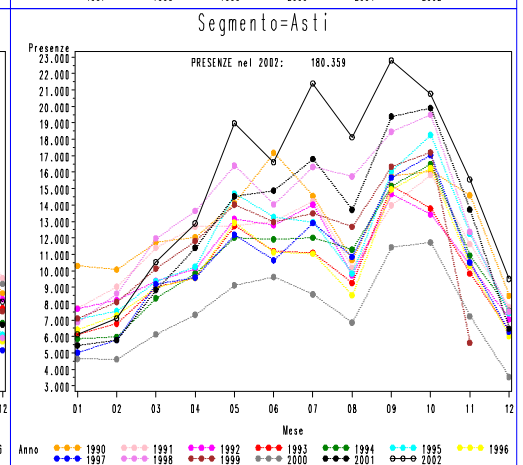
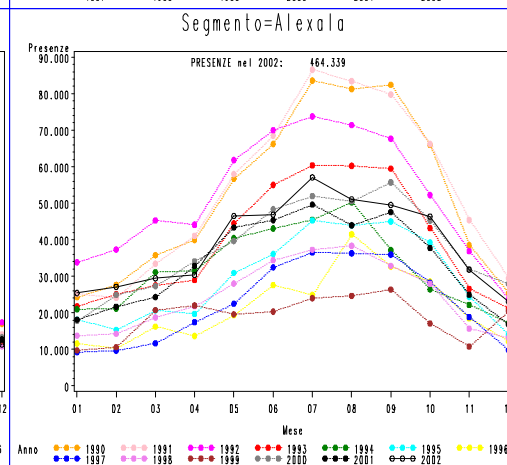
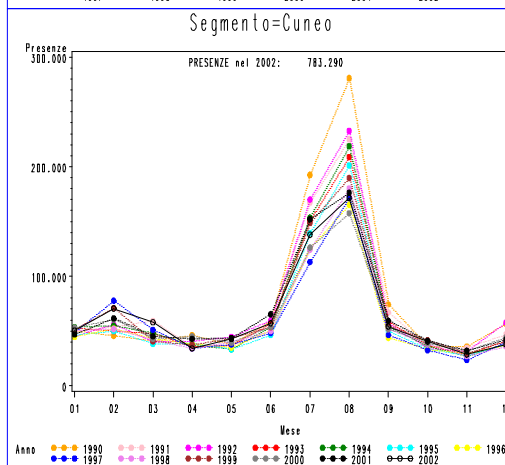
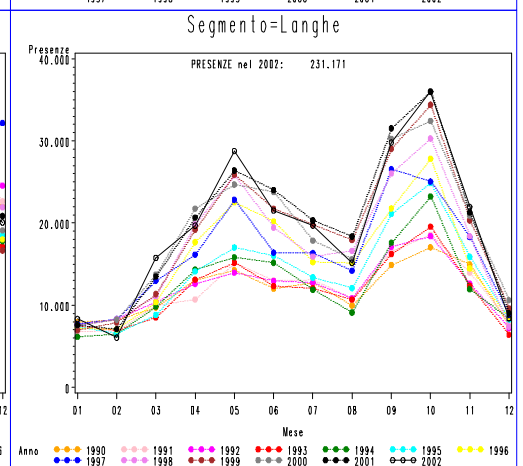
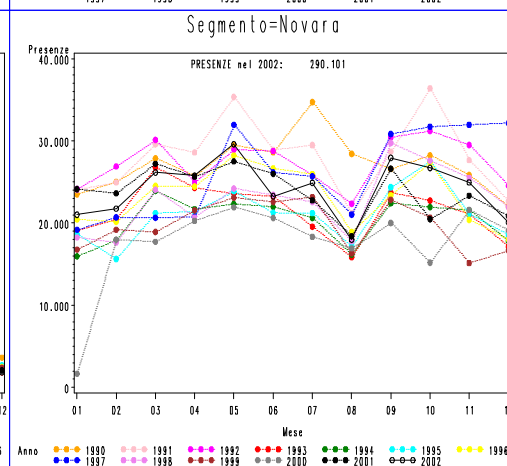
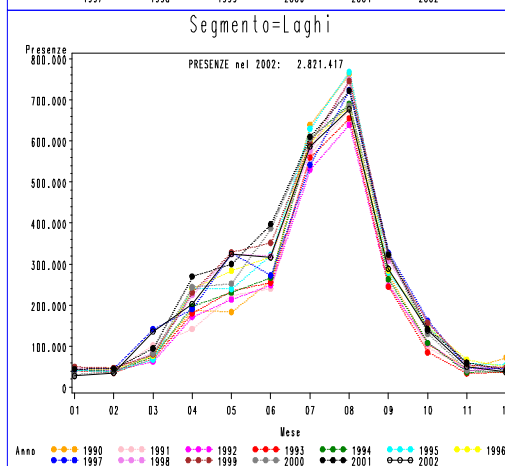
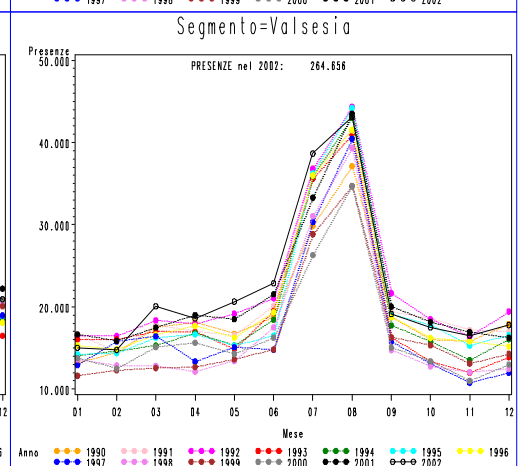
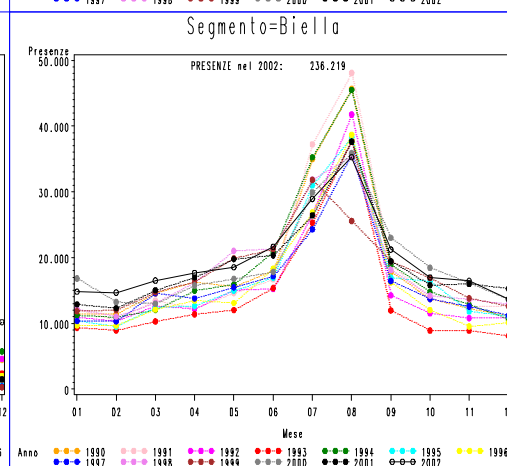
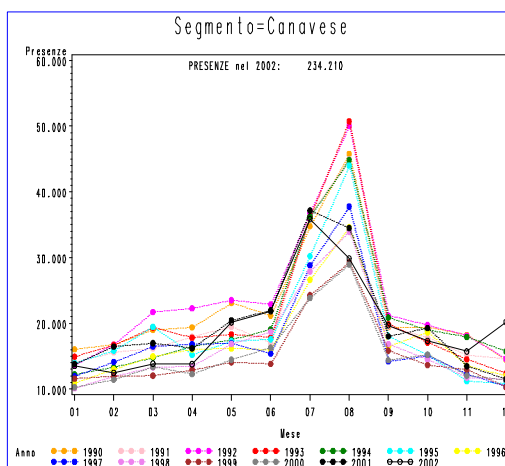
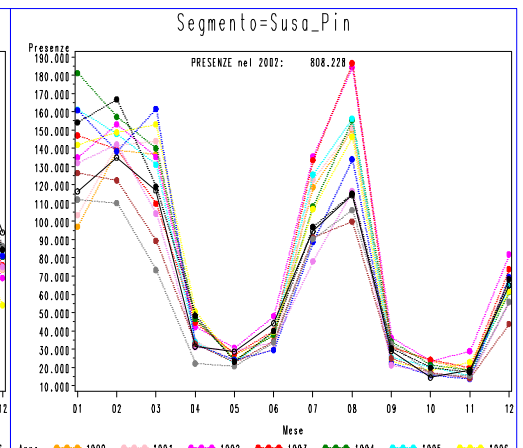
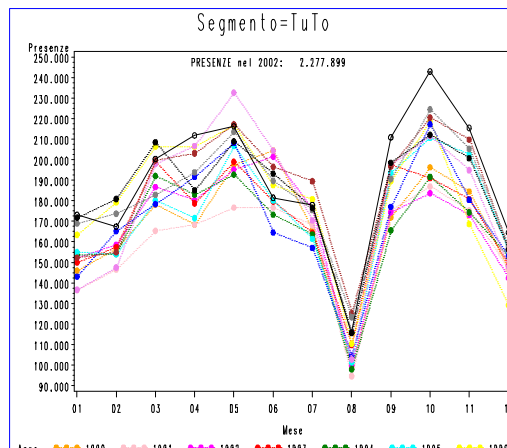
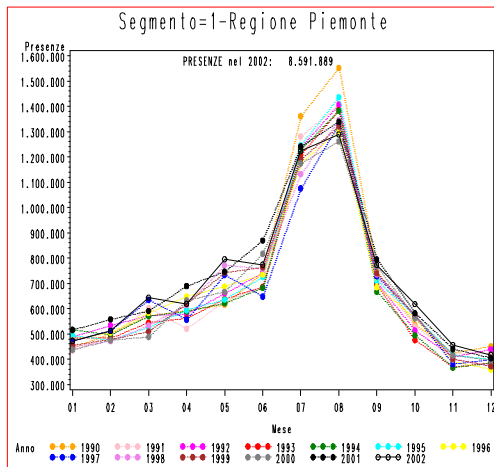
Totale Arrivi	% Arrivi	Diff. rispetto a 2001	Diff. % rispetto a 2001	ATL	ITALIA			ESTERO		
					Settore		Totale	Settore		Totale
					Alb	Ext		Alb	Ext	
786.587	29,67%	30.067	3,97%	Area Metropolitana di Torino	497.567	23.111	520.678	250.258	15.651	265.909
194.817	7,35%	-11.083	-5,38%	Valle di Susa e Pinerolese	77.840	63.995	141.835	44.626	8.356	52.982
68.643	2,59%	-7.007	-9,26%	Canavese e Valli di Lanzo	41.570	9.206	50.776	16.604	1.263	17.867
71.634	2,70%	-1.709	-2,33%	Biella	37.280	16.314	53.594	14.863	3.177	18.040
56.664	2,14%	-5.796	-9,28%	Valsesia e Vercelli	31.037	13.037	44.074	9.380	3.210	12.590
789.185	29,77%	-57.703	-6,81%	Distretto turistico dei Laghi	190.367	78.762	269.129	374.072	145.984	520.056
97.402	3,67%	10.736	12,39%	Novara	64.101	753	64.854	32.392	156	32.548
111.251	4,20%	4.620	4,33%	Langhe e Roero	39.661	9.241	48.902	51.586	10.763	62.349
216.599	8,17%	-8.462	-3,76%	Cuneo	113.973	46.267	160.240	46.952	9.407	56.359
179.600	6,77%	9.146	5,37%	Alexala	123.468	7.016	130.484	44.688	4.428	49.116
78.686	2,97%	5.265	7,17%	Asti	31.419	10.387	41.806	27.213	9.667	36.880
2.651.068	100,00%	-31.926	-1,19%	Totale Regionale	1.248.283	278.089	1.526.372	912.634	212.062	1.124.696

Presenze 2002 - Distribuzione nelle ATL



Totale Presenze	% Presenze	Diff. rispetto a 2001	Diff. % rispetto a 2001	ATL	ITALIA			ESTERO		
					Settore		Totale	Settore		Totale
					Alb	Ext		Alb	Ext	
2.277.899	26,51%	70.200	3,18%	Area Metropolitana di Torino	1.135.190	411.067	1.546.257	573.191	158.451	731.642
808.228	9,41%	-90.654	-10,09%	Valle di Susa e Pinerolese	310.699	243.399	554.098	208.062	46.068	254.130
234.210	2,73%	-5.559	-2,32%	Canavese e Valli di Lanzo	153.194	35.656	188.850	41.665	3.695	45.360
236.219	2,75%	8.412	3,69%	Biella	127.514	55.258	182.772	43.911	9.536	53.447
264.656	3,08%	7.568	2,94%	Valsesia e Vercelli	140.407	85.691	226.098	27.466	11.092	38.558
2.821.417	32,84%	-230.039	-7,54%	Distretto turistico dei Laghi	467.982	373.031	841.013	1.084.667	895.737	1.980.404
290.101	3,38%	3.567	1,24%	Novara	212.762	8.986	221.748	67.732	621	68.353
231.171	2,69%	-4.609	-1,95%	Langhe e Roero	72.683	20.733	93.416	112.664	25.091	137.755
783.290	9,12%	-25.093	-3,10%	Cuneo	404.972	217.432	622.404	134.315	26.571	160.886
464.339	5,40%	58.243	14,34%	Alexala	337.418	26.526	363.944	83.427	16.968	100.395
180.359	2,10%	29.498	19,55%	Asti	65.936	24.260	90.196	62.529	27.634	90.163
8.591.889	100,00%	-178.466	-2,03%	Totale Regionale	3.428.757	1.502.039	4.930.796	2.439.629	1.221.464	3.661.093

ATL – Andamenti Annuali Presenze



ATL – Andamenti Annuali Arrivi

