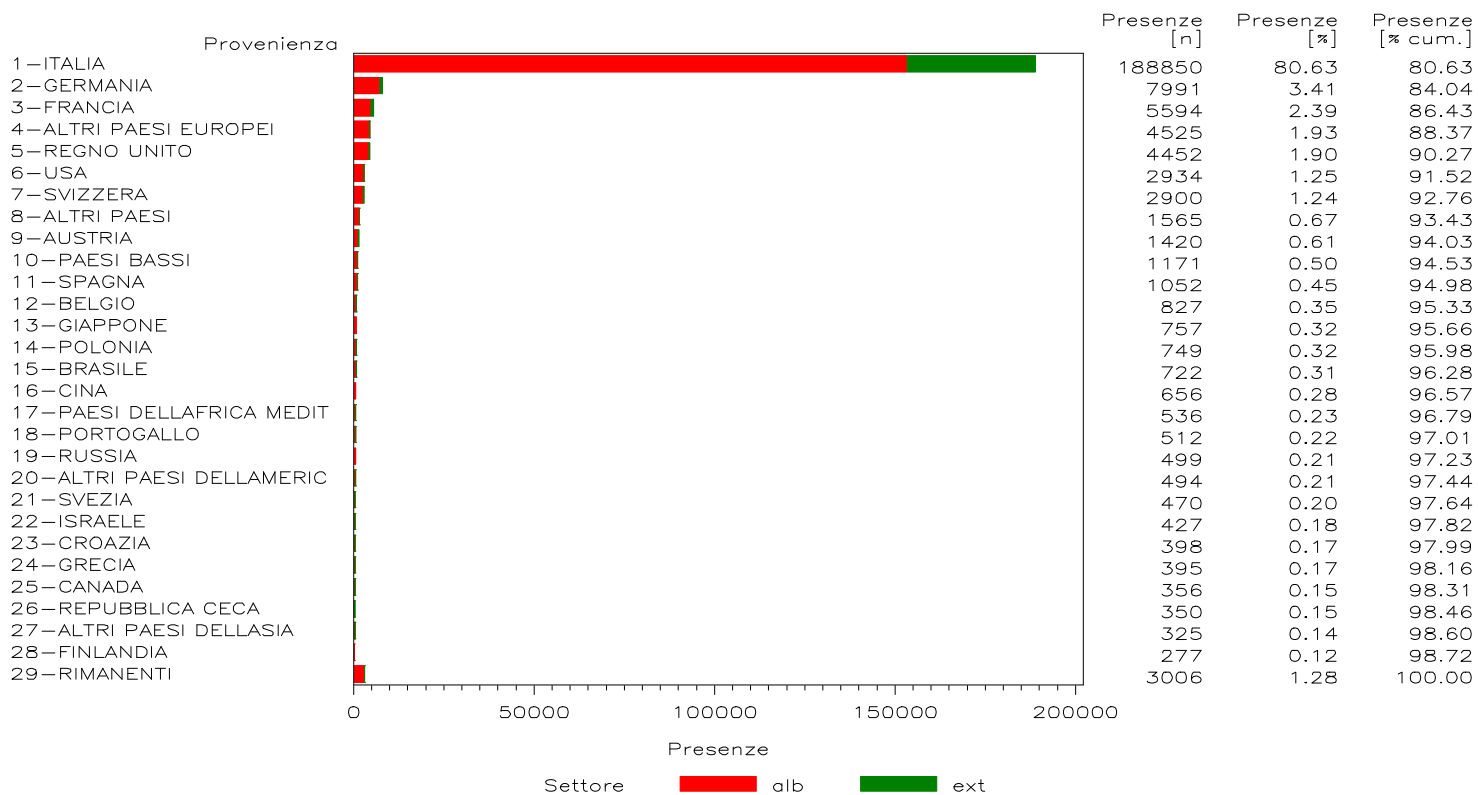
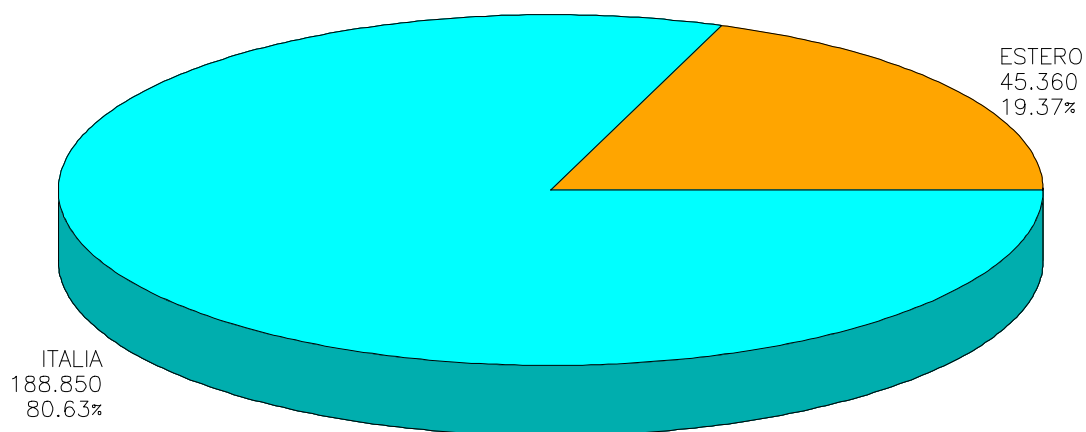


ATL : CANAVESE

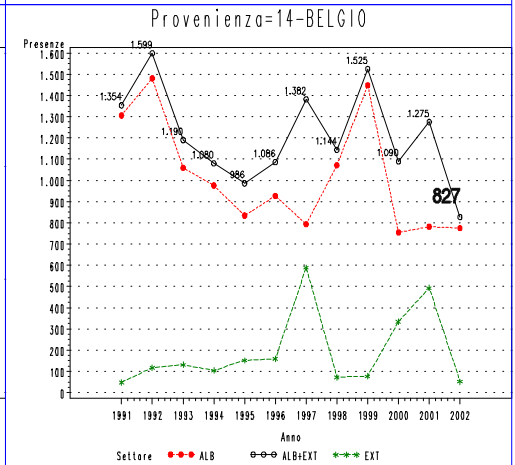
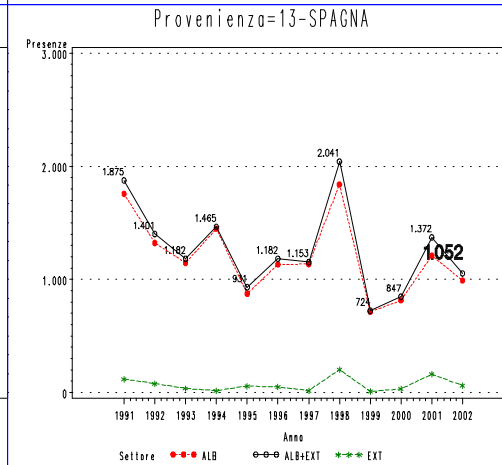
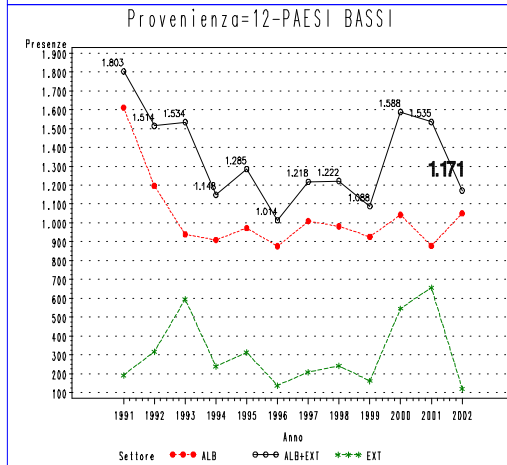
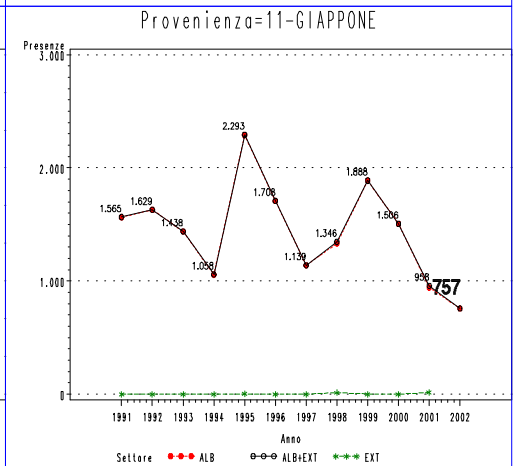
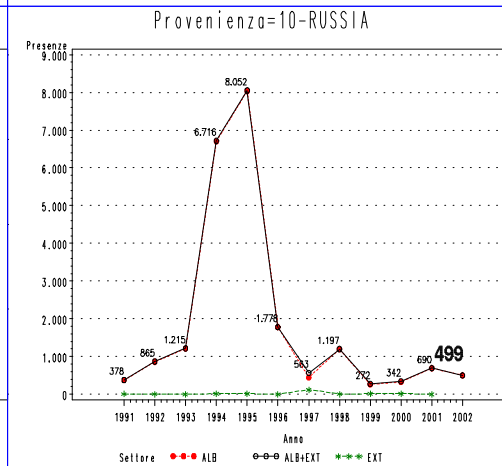
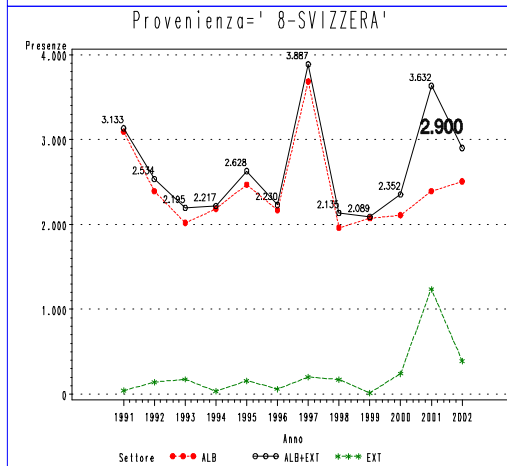
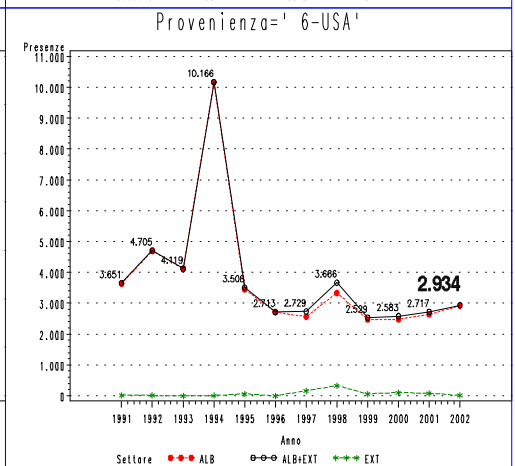
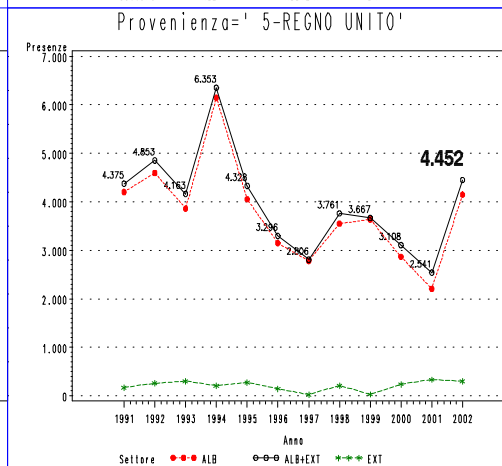
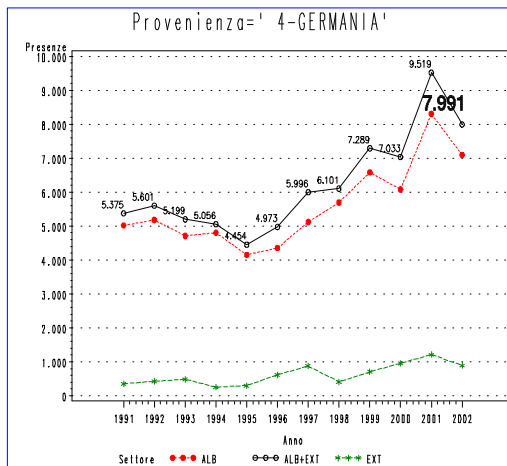
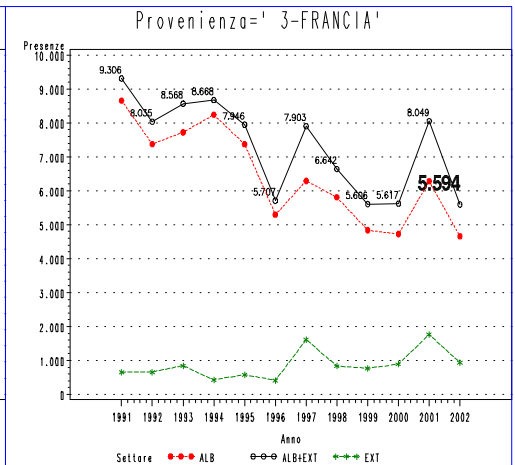
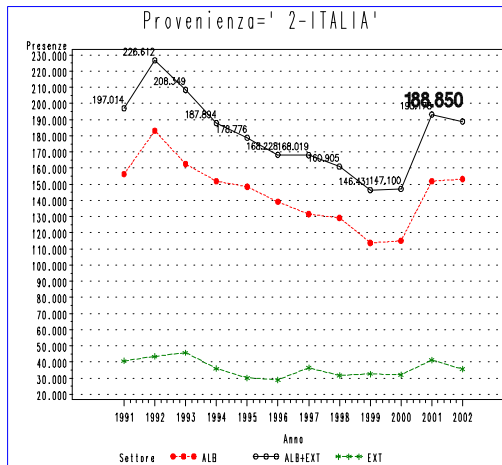
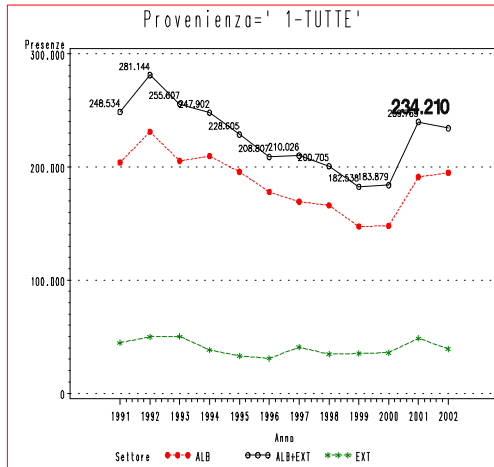
ANNO 2002

Presenze totali 2002: 234.210

Differenza Presenze rispetto al 2001: -5.559 (- 2.32 %)



SEGMENTO CANAVESE – Mercati di provenienza – Presenze

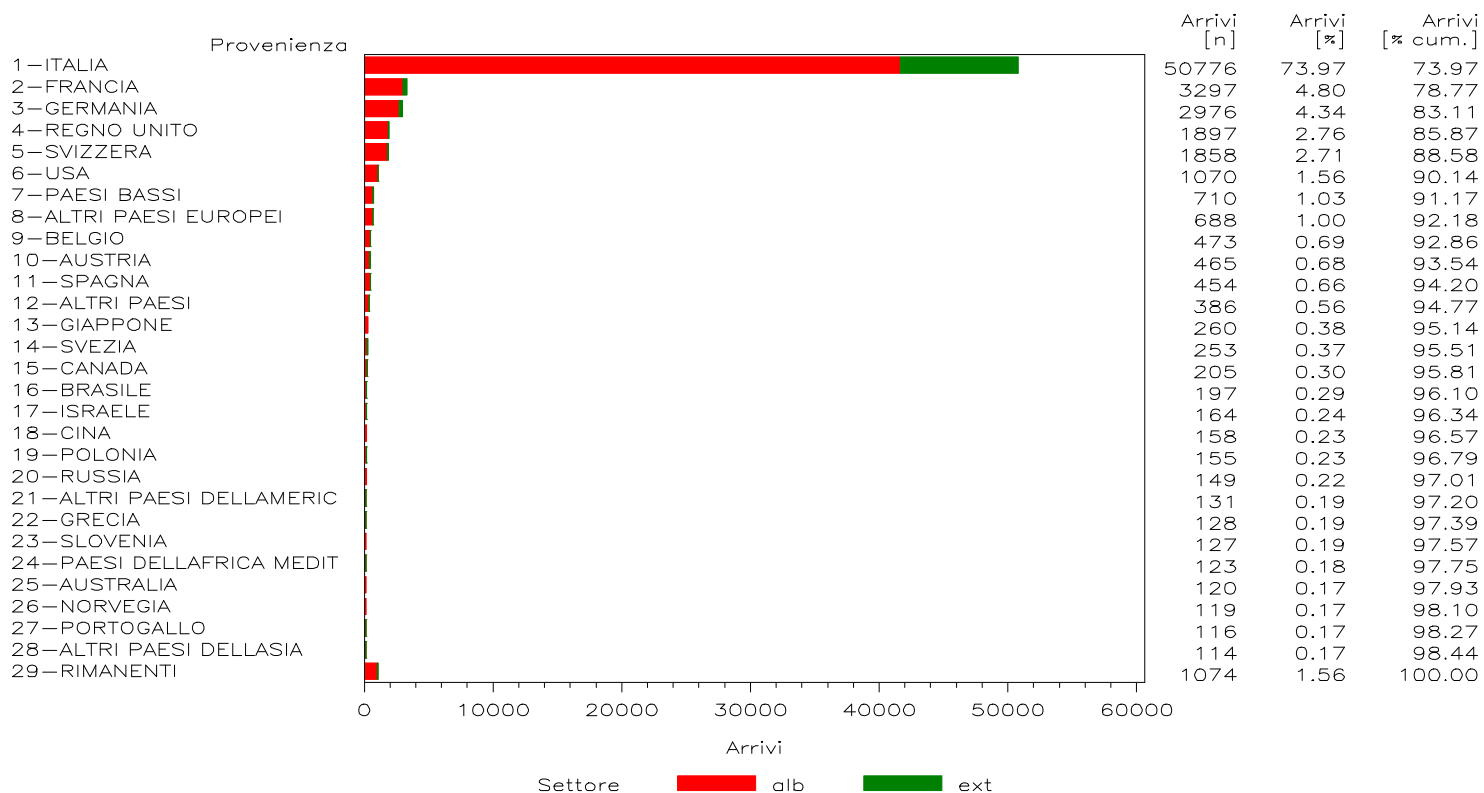
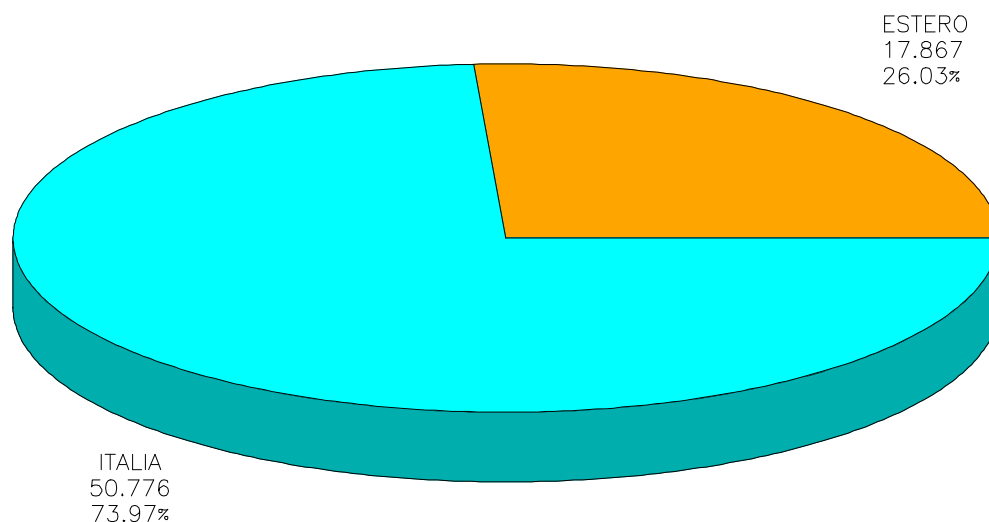


ATL : CANAVESE

ANNO 2002

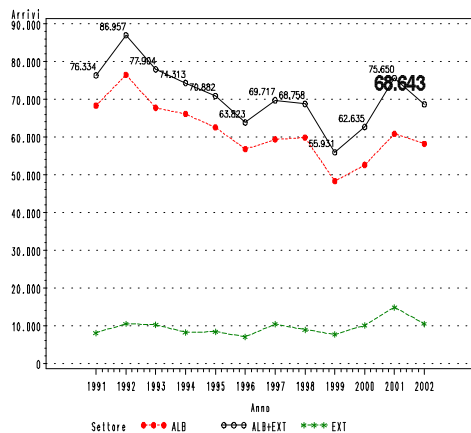
Arrivi totali 2002: 68.643

Differenza Arrivi rispetto al 2001: -7.007 (- 9.26 %)

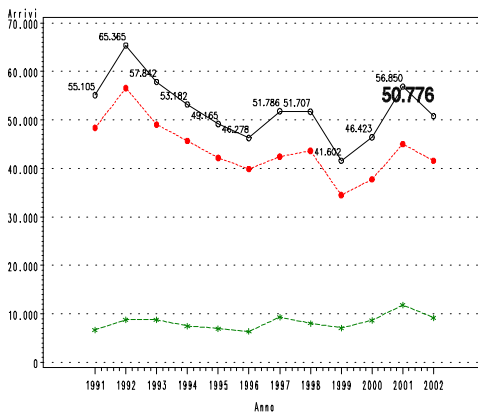


SEGMENTO CANAVESE – Mercati di provenienza – Arrivi

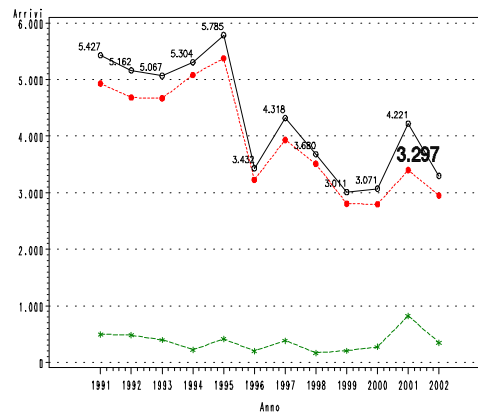
Provenienza=' 1-TUTTE'



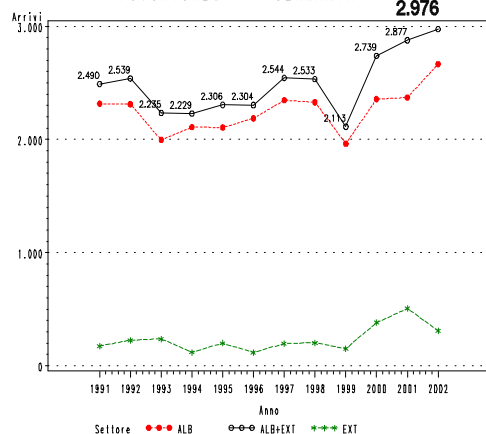
Provenienza=' 2-ITALIA'



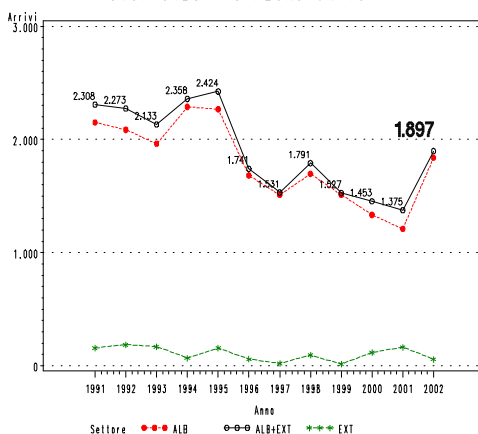
Provenienza=' 3-FRANCIA'



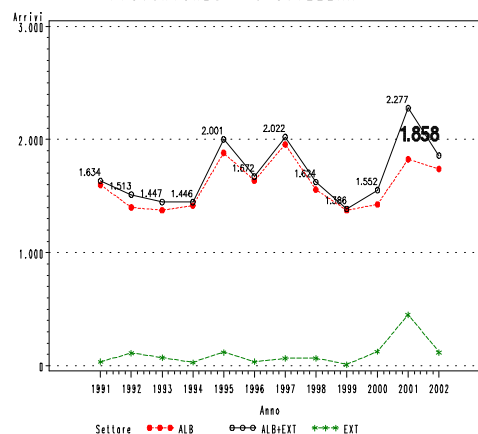
Provenienza=' 4-GERMANIA'



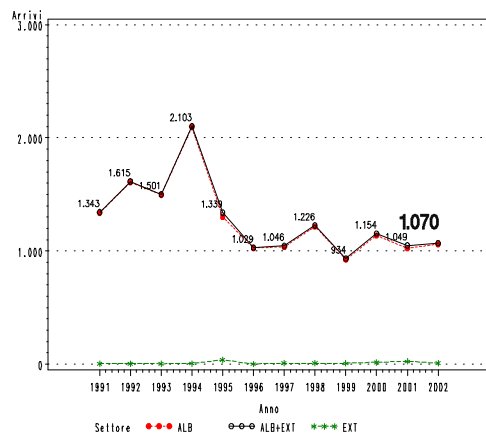
Provenienza=' 5-REGNO UNITO'



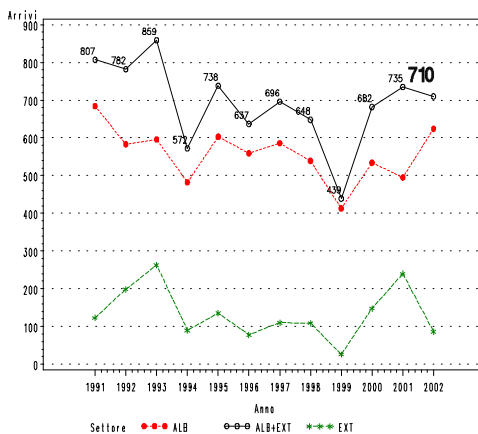
Provenienza=' 6-SVIZZERA'



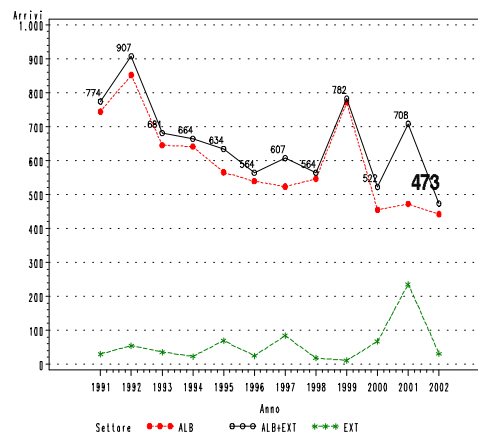
Provenienza=' 7-USA'



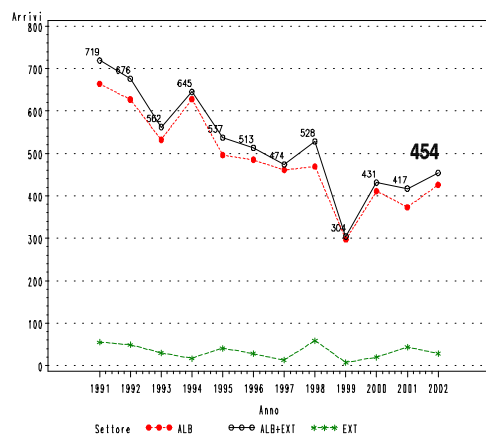
Provenienza=' 9-PAESI BASSI'



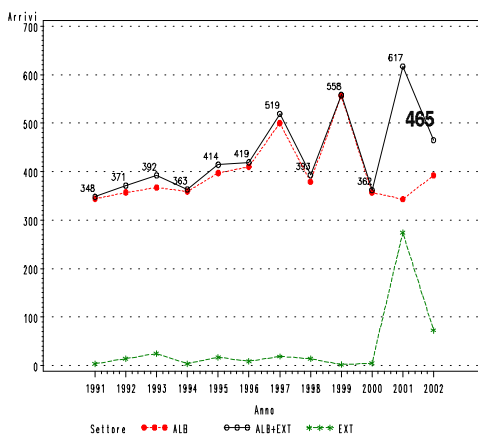
Provenienza=10-BELGIO



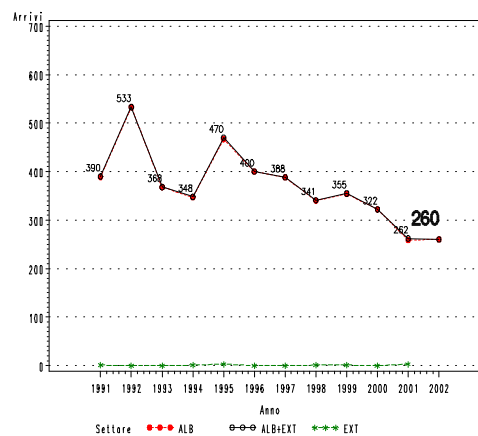
Provenienza=12-SPAGNA



Provenienza=13-AUSTRIA



Provenienza=14-GIAPPONE



OFFERTA CANAVESE

N.ESERCIZI

N.LETTI

