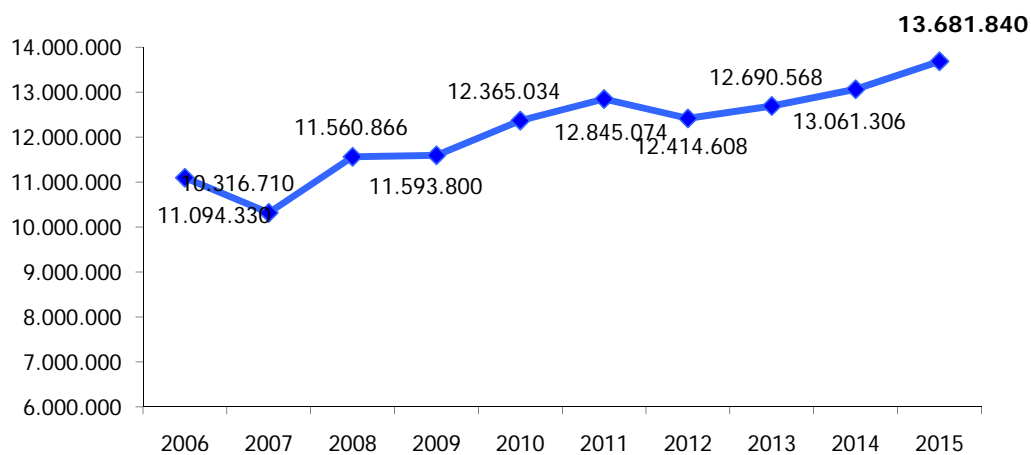
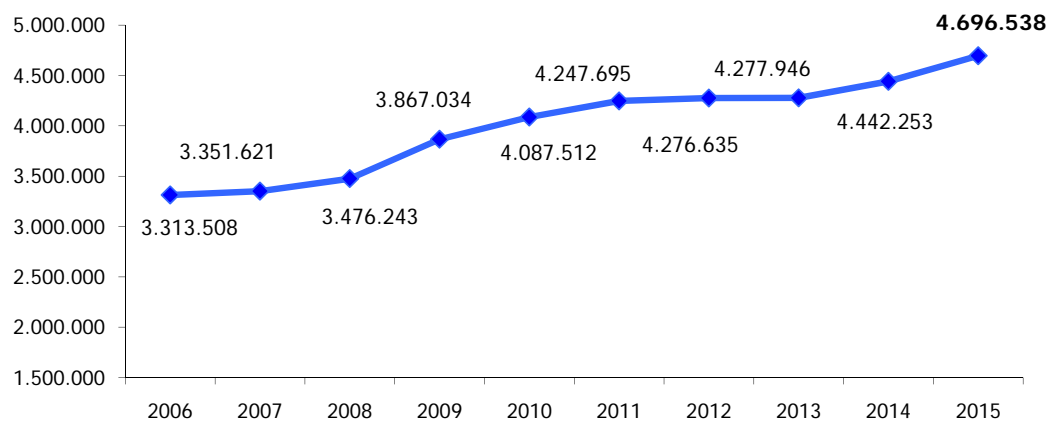


Trend Presenze 2006 - 2015



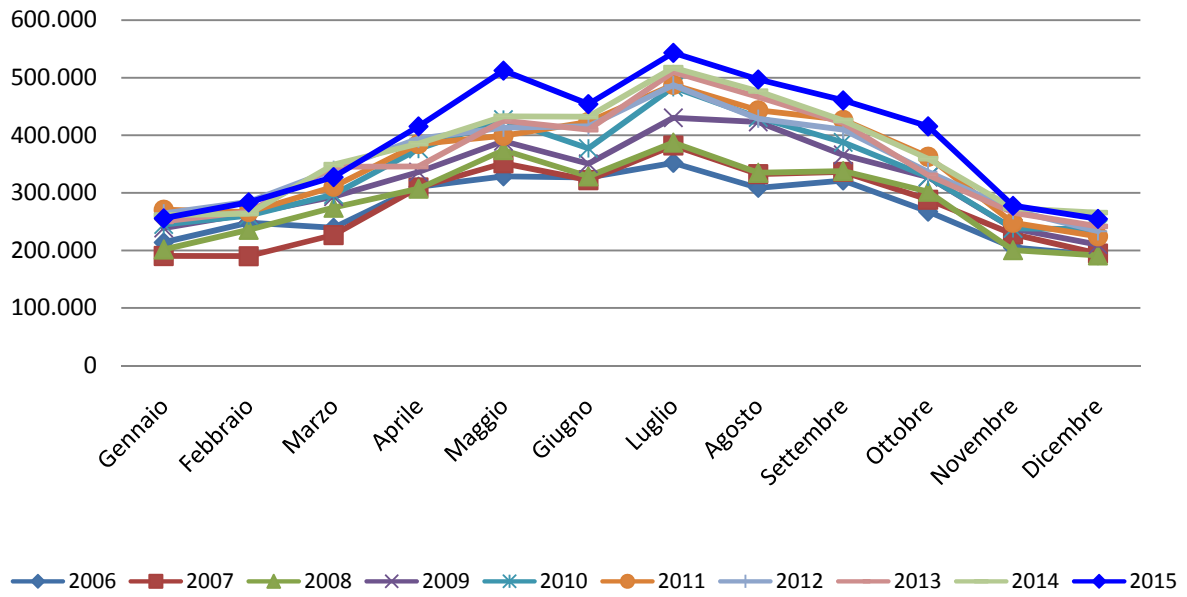
ANNO	PRESENZE	Differenza % su 2006	Differenza % su 2007	Differenza % su 2008	Differenza % su 2009	Differenza % su 2010	Differenza % su 2011	Differenza % su 2012	Differenza % su 2013	Differenza % su 2014
2006	11.094.330									
2007	10.316.710	-7,01%								
2008	11.560.866	4,21%	12,06%							
2009	11.593.800	4,50%	12,38%	0,28%						
2010	12.365.034	11,45%	19,85%	6,96%	6,65%					
2011	12.845.074	15,78%	24,51%	11,11%	10,79%	3,88%				
2012	12.414.608	11,90%	20,33%	7,38%	7,08%	0,40%	-3,35%			
2013	12.690.568	14,39%	23,01%	9,77%	9,46%	2,63%	-1,20%	2,22%		
2014	13.061.306	17,73%	26,60%	12,98%	12,66%	5,63%	1,68%	5,21%	2,92%	
2015	13.681.840	23,32%	32,62%	18,35%	18,01%	10,65%	6,51%	10,21%	7,81%	4,75%

Trend Arrivi 2006 - 2015

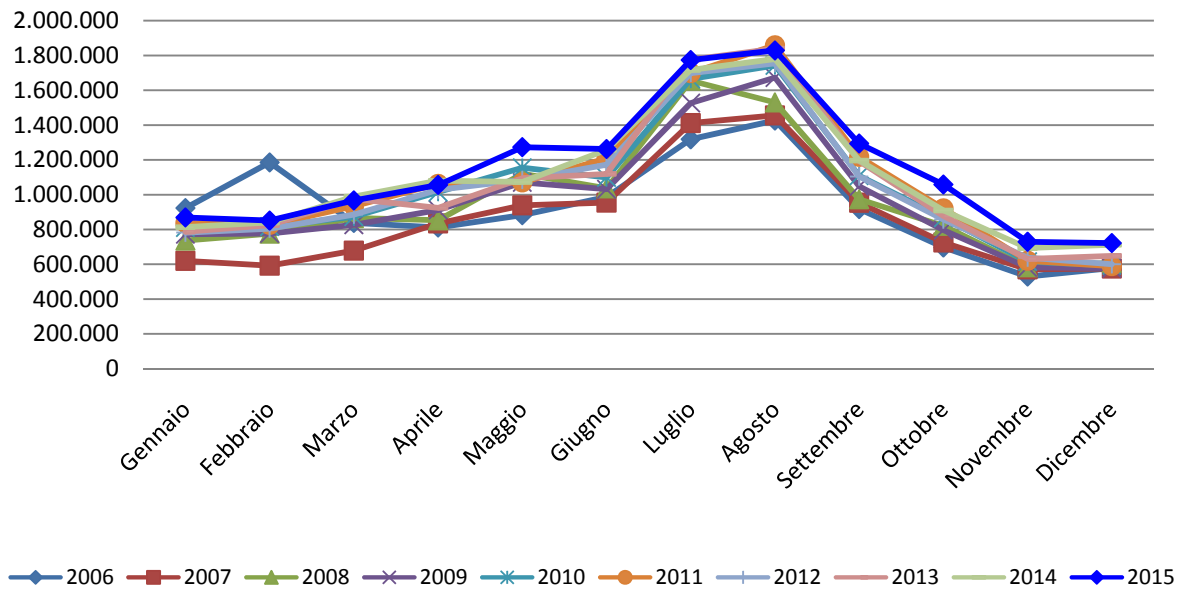


ANNO	ARRIVI	Differenza % su 2006	Differenza % su 2007	Differenza % su 2008	Differenza % su 2009	Differenza % su 2010	Differenza % su 2011	Differenza % su 2012	Differenza % su 2013	Differenza % su 2014
2006	3.313.508									
2007	3.351.621	1,15%								
2008	3.476.243	4,91%	3,72%							
2009	3.867.034	16,71%	15,38%	11,24%						
2010	4.087.512	23,36%	21,96%	17,58%	5,70%					
2011	4.247.695	28,19%	26,74%	22,19%	9,84%	3,92%				
2012	4.276.635	29,07%	27,60%	23,02%	10,59%	4,63%	0,68%			
2013	4.277.946	29,11%	27,64%	23,06%	10,63%	4,66%	0,71%	0,03%		
2014	4.442.253	34,06%	32,54%	27,79%	14,87%	8,68%	4,58%	3,87%	3,84%	
2015	4.696.538	41,74%	40,13%	35,10%	21,45%	14,90%	10,57%	9,82%	9,78%	5,72%

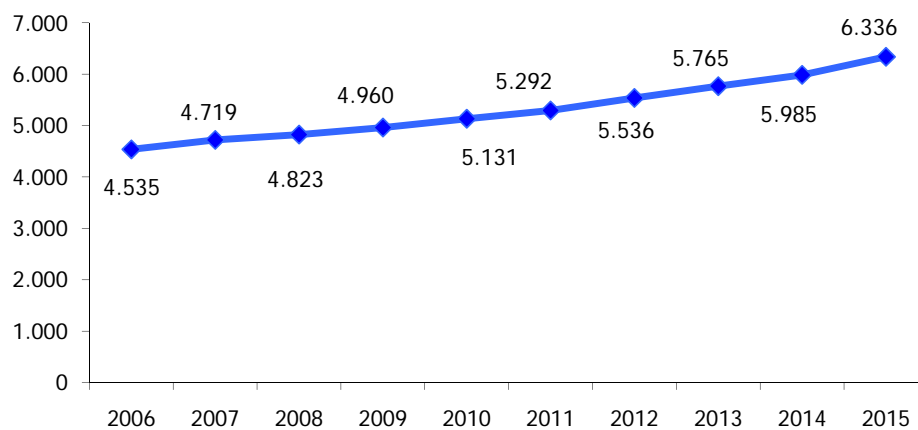
Trend Arrivi Mensili



Trend Presenze Mensili

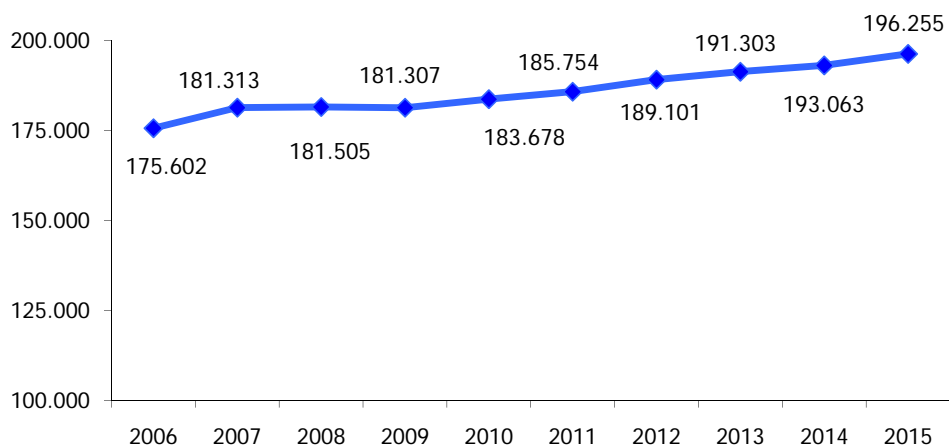


Trend Esercizi Ricettivi 2006 - 2015



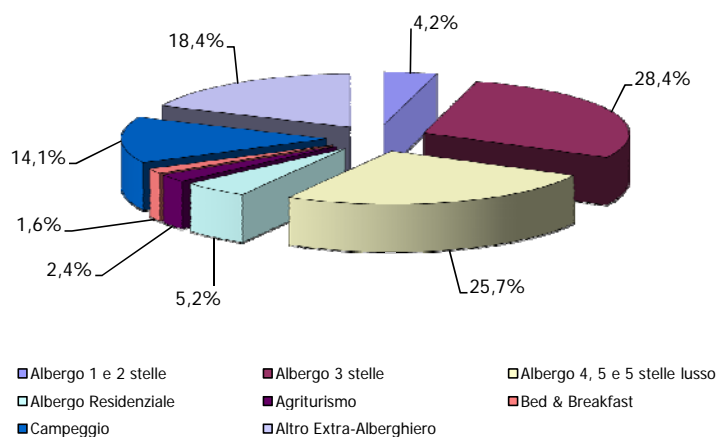
ANNO	STRUTTURE	Differenza % su 2006	Differenza % su 2007	Differenza % su 2008	Differenza % su 2009	Differenza % su 2010	Differenza % su 2011	Differenza % su 2012	Differenza % su 2013	Differenza % su 2014
2006	4.535									
2007	4.719	4,06%								
2008	4.823	6,35%	2,20%							
2009	4.960	9,37%	5,11%	2,84%						
2010	5.131	13,14%	8,73%	6,39%	3,45%					
2011	5.292	16,69%	12,14%	9,72%	6,69%	3,14%				
2012	5.536	22,07%	17,31%	14,78%	11,61%	7,89%	4,61%			
2013	5.765	27,12%	22,17%	19,53%	16,23%	12,36%	8,94%	4,14%		
2014	5.985	31,97%	26,83%	24,09%	20,67%	16,64%	13,10%	8,11%	3,82%	
2015	6.336	39,71%	34,27%	31,37%	27,74%	23,48%	19,73%	14,45%	9,90%	5,86%

Trend Posti Letto 2005 - 2015



ANNO	LETTI	Differenza % su 2006	Differenza % su 2007	Differenza % su 2008	Differenza % su 2009	Differenza % su 2010	Differenza % su 2011	Differenza % su 2012	Differenza % su 2013	Differenza % su 2014
2006	175.602									
2007	181.313	3,25%								
2008	181.505	3,36%	0,11%							
2009	181.307	3,25%	0,00%	-0,11%						
2010	183.678	4,60%	1,30%	1,20%	1,31%					
2011	185.754	5,78%	2,45%	2,34%	2,45%	1,13%				
2012	189.101	7,69%	4,30%	4,19%	4,30%	2,95%	1,80%			
2013	191.303	8,94%	5,51%	5,40%	5,51%	4,15%	2,99%	1,16%		
2014	193.063	9,94%	6,48%	6,37%	6,48%	5,11%	3,93%	2,10%	0,92%	
2015	196.255	11,76%	8,24%	8,13%	8,24%	6,85%	5,65%	3,78%	2,59%	1,65%

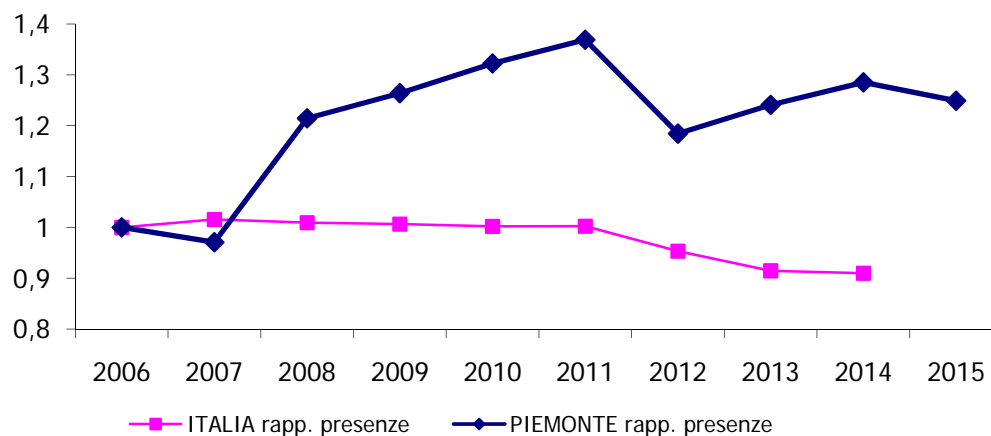
**Presenze 2015 per tipologie di strutture ricettive
Principali Paesi di provenienza - 85% del totale presenze**



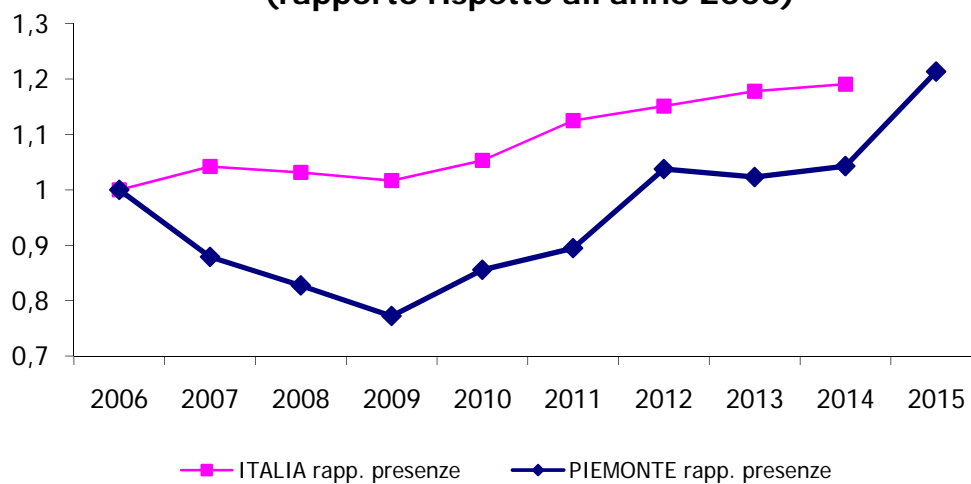
Tipologia struttura	Germania	Francia	Regno Unito e Liechtenstein	Paesi Bassi	USA	Spagna	Italia	TOTALE
Albergo 1 e 2 stelle	20.412	26.872	20.113	11.979	4.003	2.996	4.790	494.617
Albergo 3 stelle	320.023	235.096	117.774	107.286	38.203	25.408	43.244	3.379.882
Albergo 4, 5 e 5 stelle lusso	298.551	227.681	302.887	153.023	47.139	195.580	49.538	3.060.058
Albergo Residenziale	30.674	17.324	127.259	13.701	12.046	14.944	2.498	622.248
Agriturismo	41.477	16.820	5.727	39.482	15.538	8.683	1.468	285.070
Bed & Breakfast	21.133	14.813	3.168	12.839	7.955	3.668	1.773	189.373
Campeggio	375.614	133.868	34.758	83.662	227.919	309	41.934	1.671.329
Altro Extra-Alberghiero	263.715	83.874	26.217	91.535	136.889	20.528	14.557	2.185.201
TOTALE	1.371.599	756.348	637.903	513.507	489.692	272.116	159.802	11.887.778

Il Piemonte rispetto al totale Italia

**Presenze turisti italiani
(rapporto rispetto all'anno 2006)**

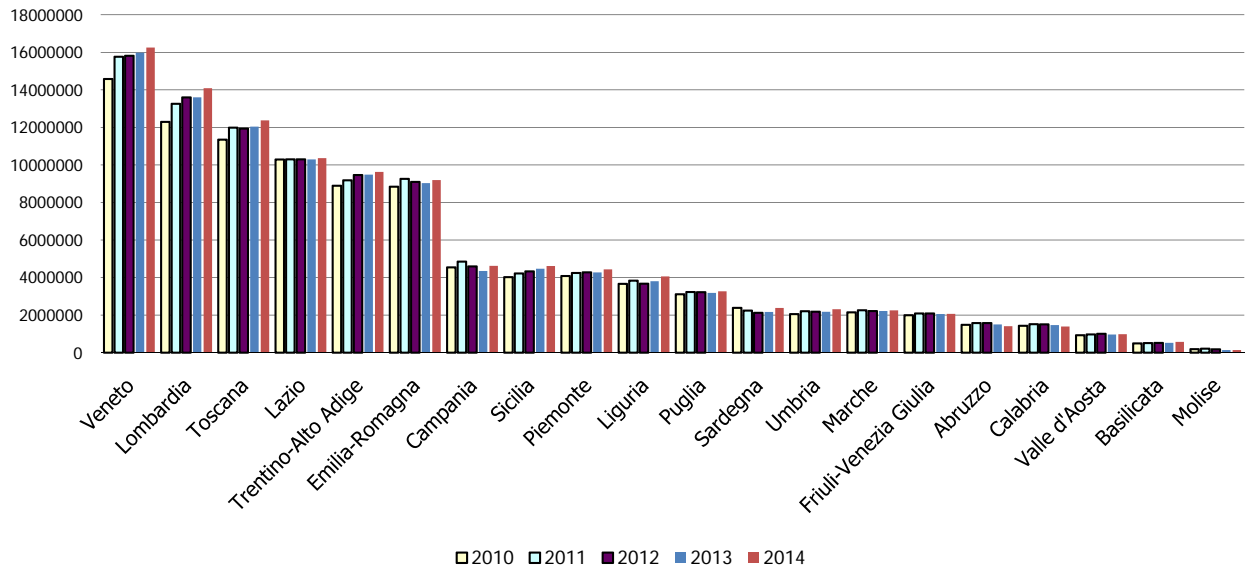


**Presenze turisti stranieri
(rapporto rispetto all'anno 2006)**



Il Piemonte rispetto alle altre regioni italiane

Arrivi



Presenze

