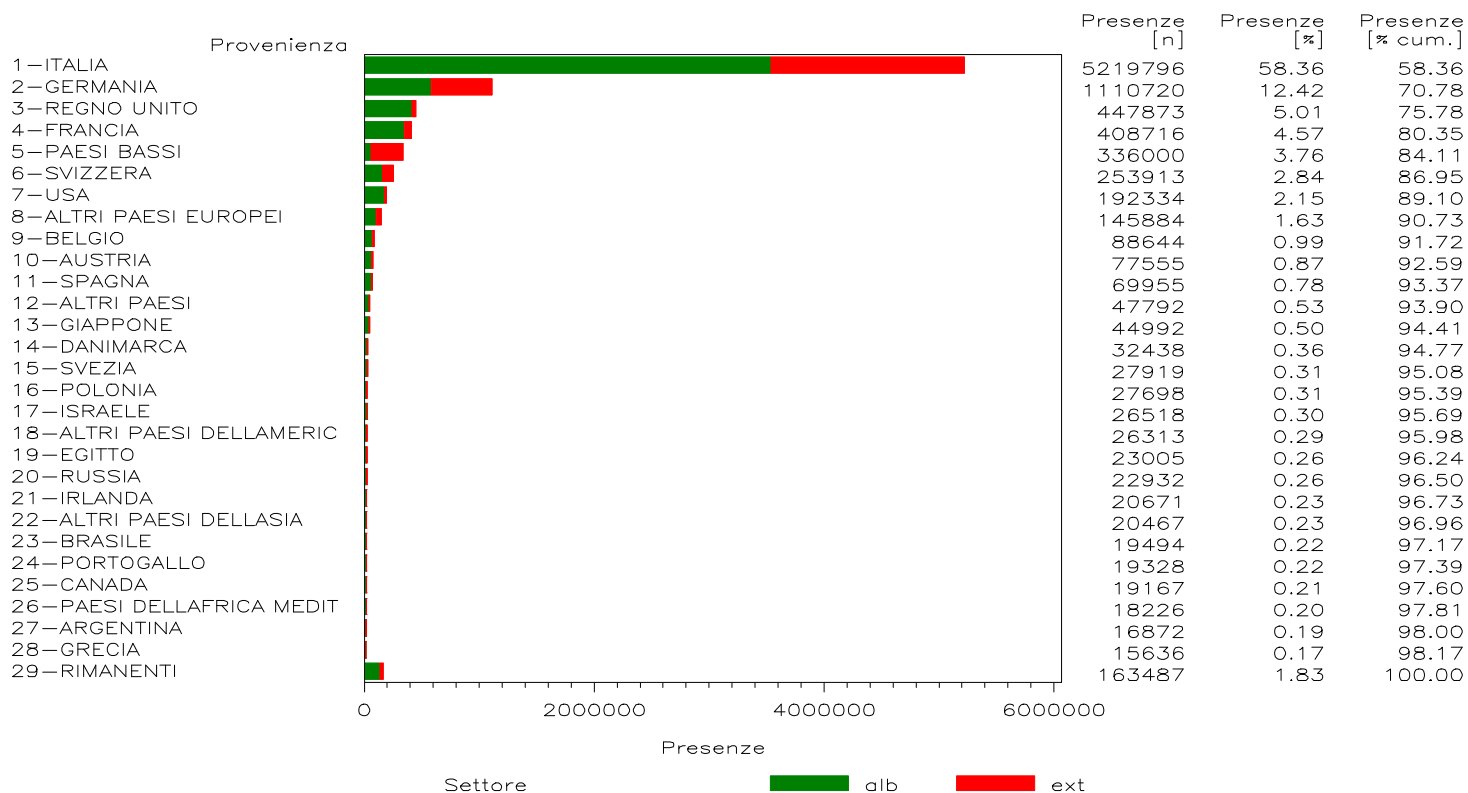
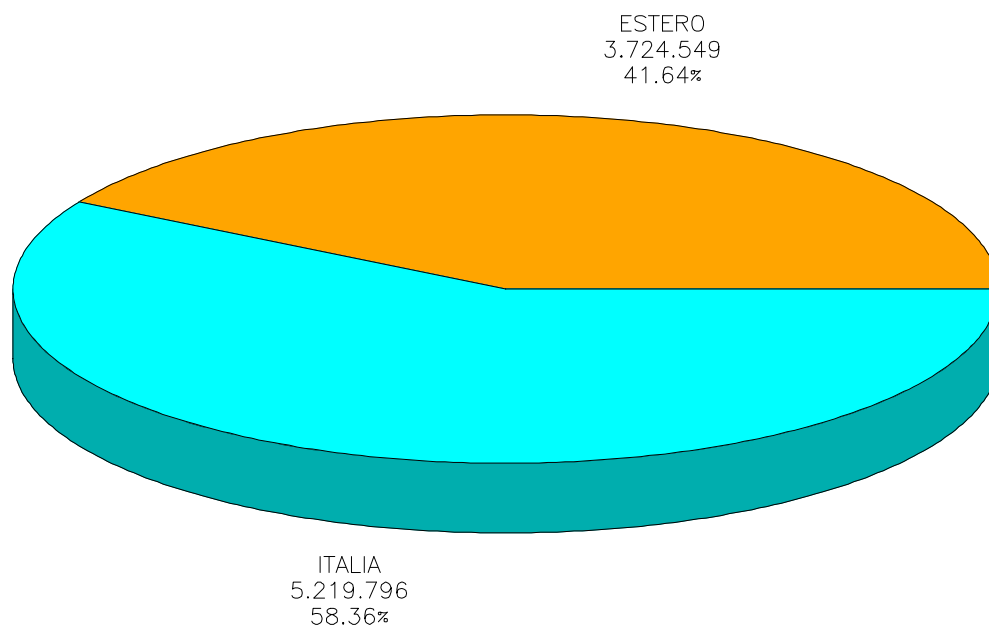


REGIONE PIEMONTE

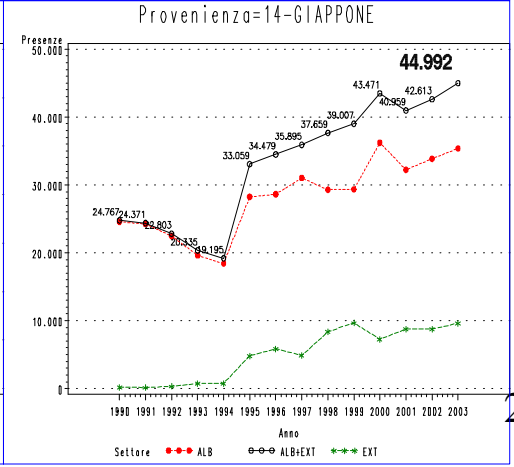
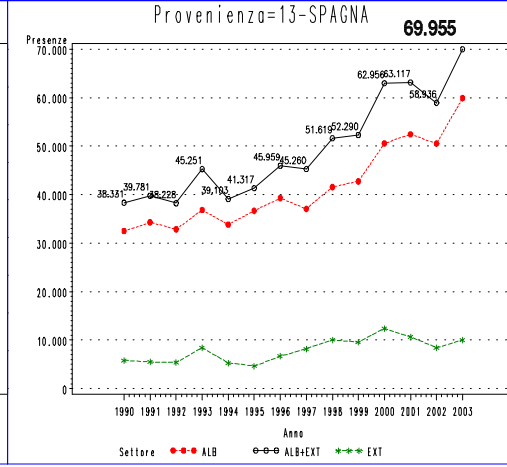
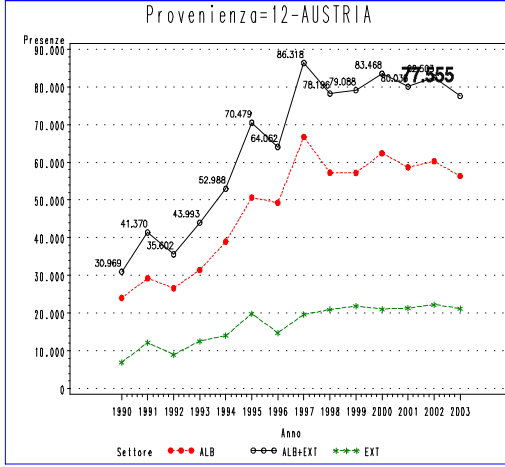
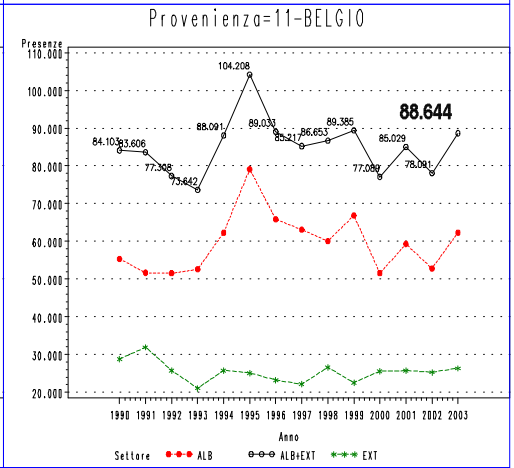
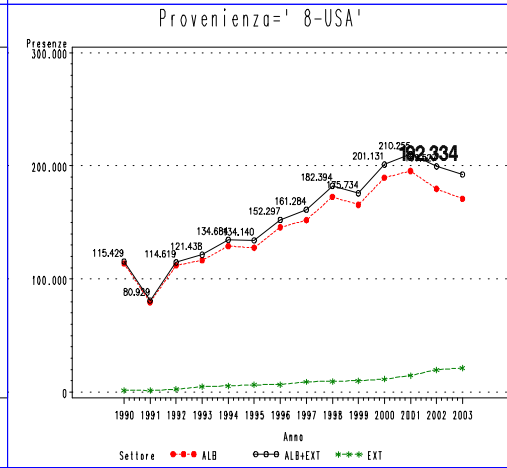
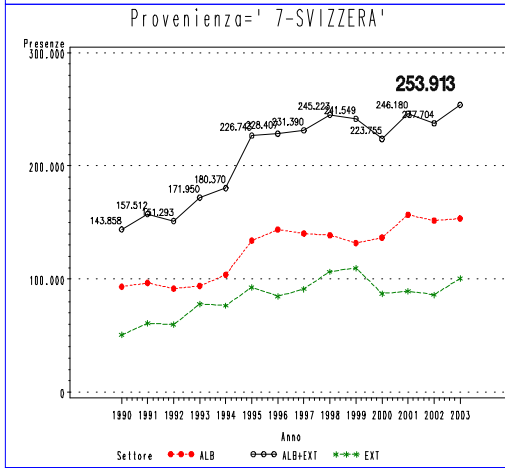
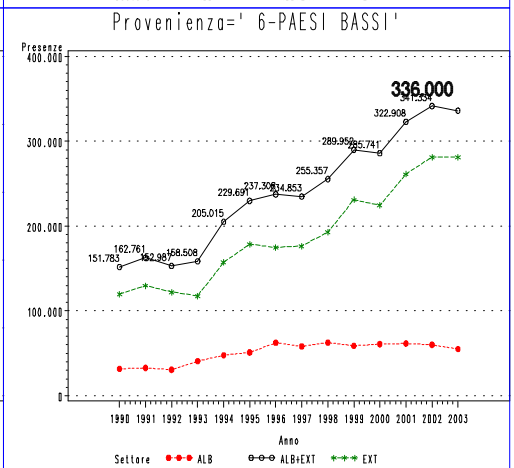
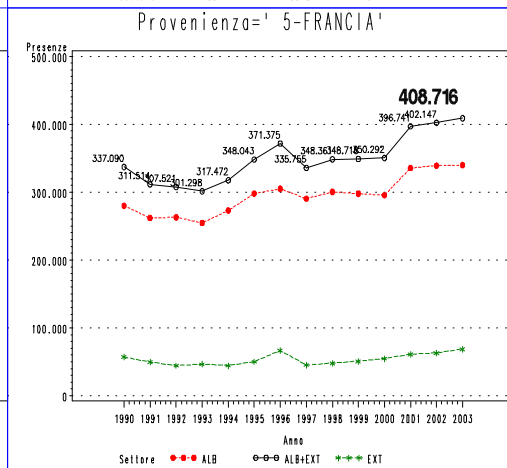
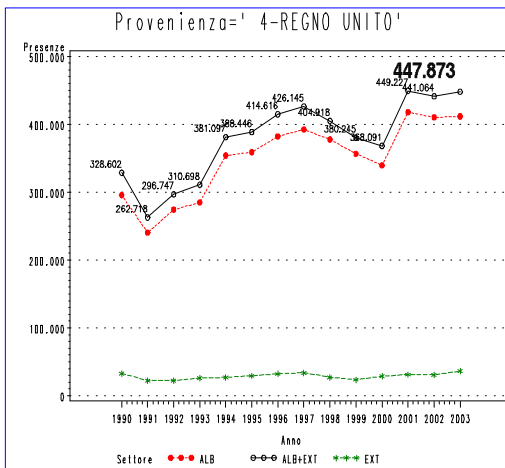
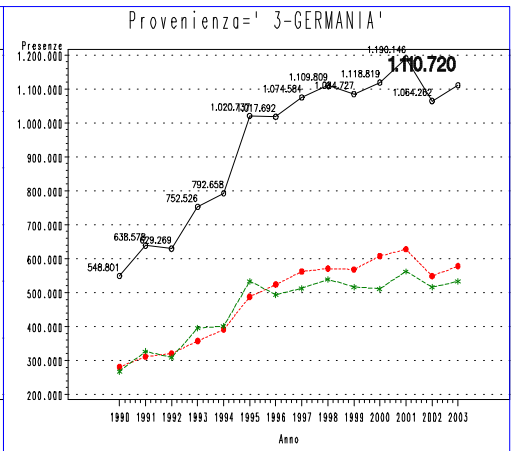
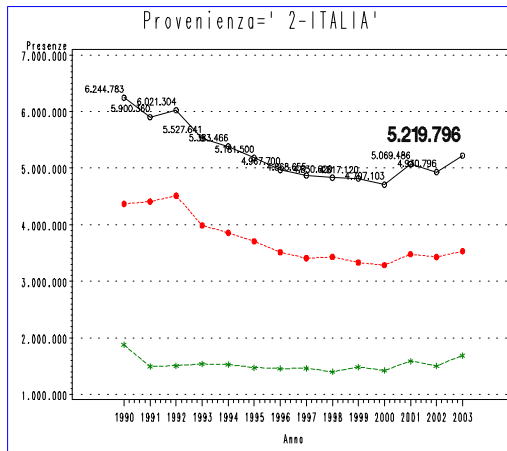
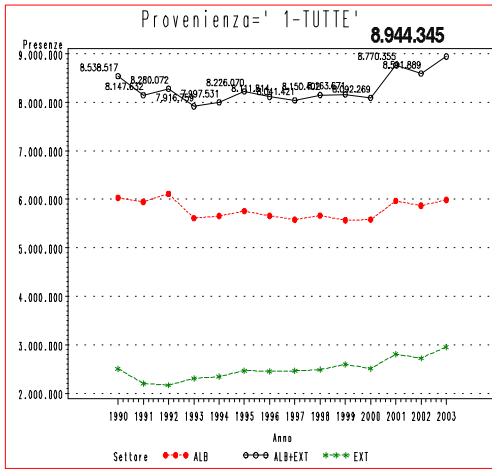
ANNO 2003

Presenze totali 2003: 8.944.345

Differenza Presenze rispetto al 2002: + 352.456 (+ 4.10 %)



REGIONE PIEMONTE – Mercati di provenienza – Presenze

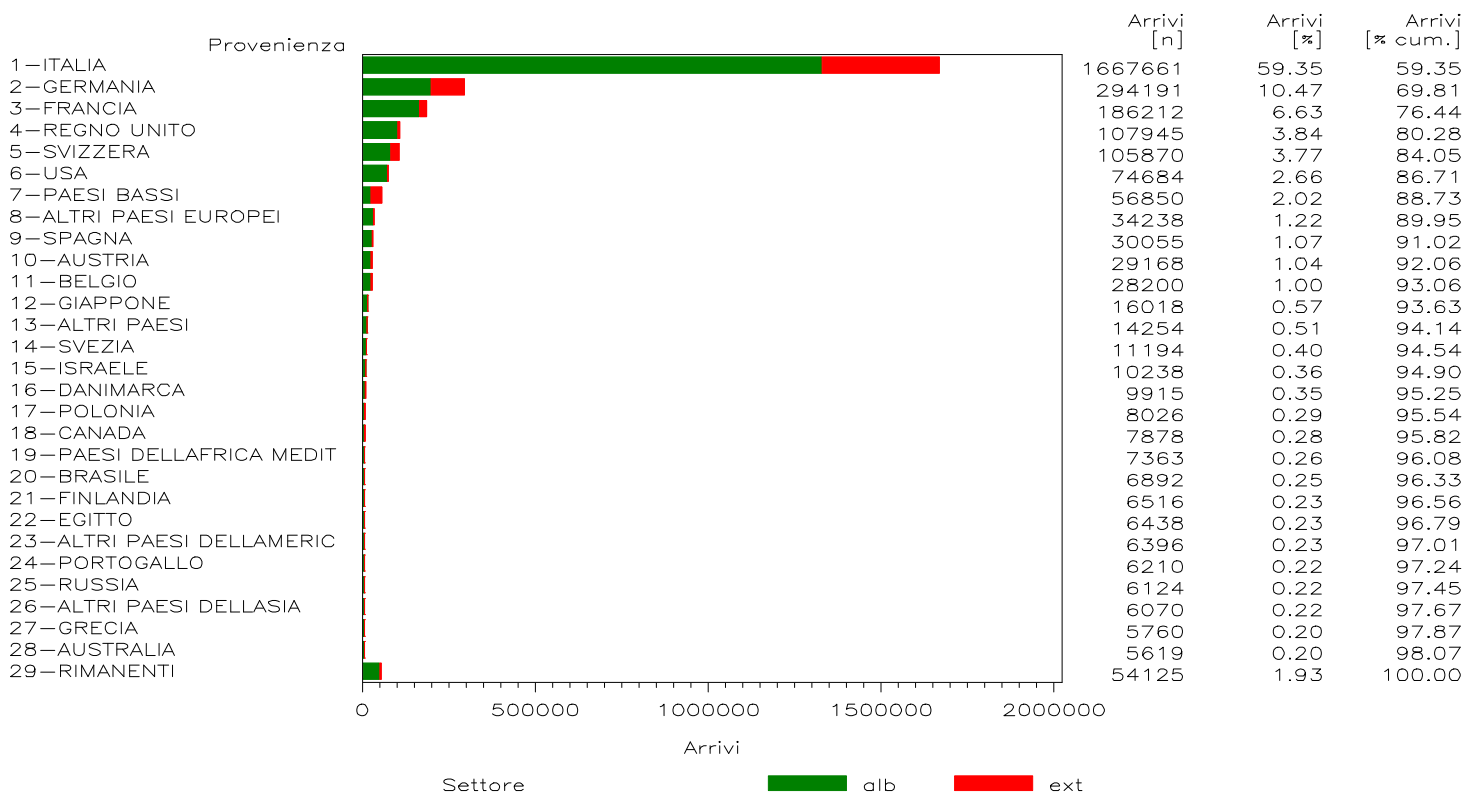
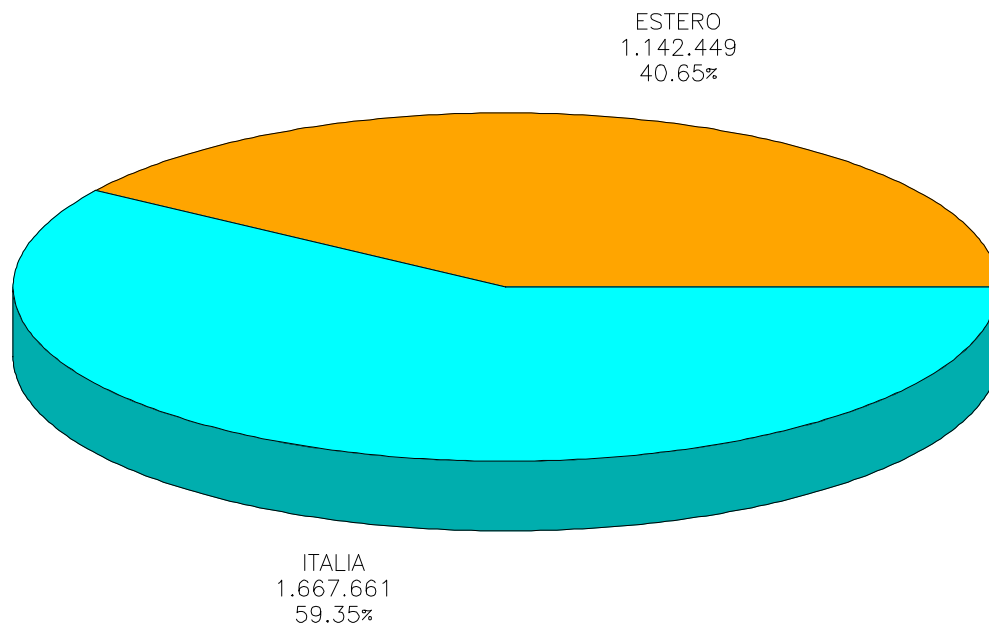


REGIONE PIEMONTE

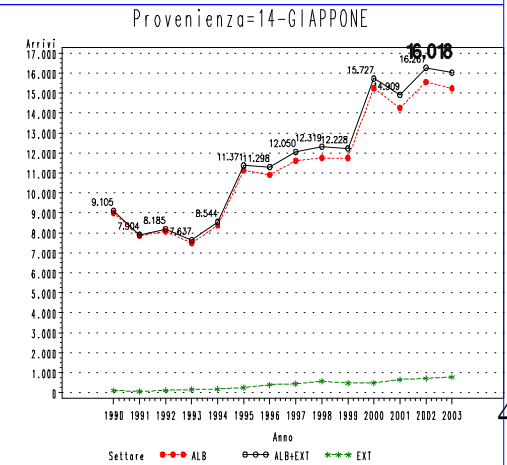
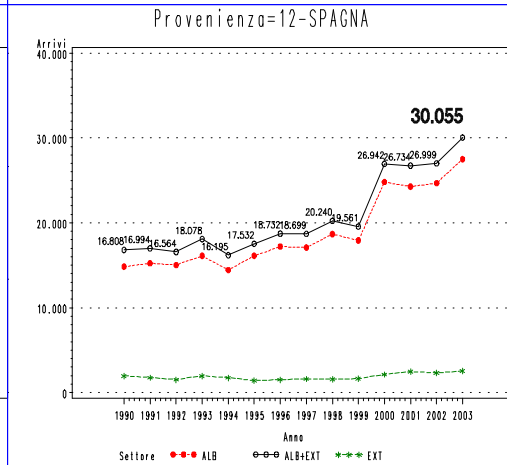
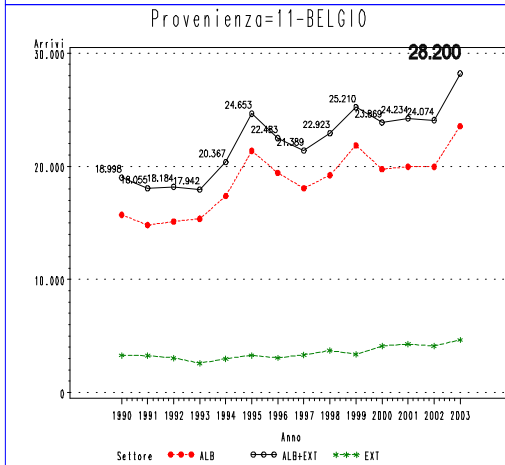
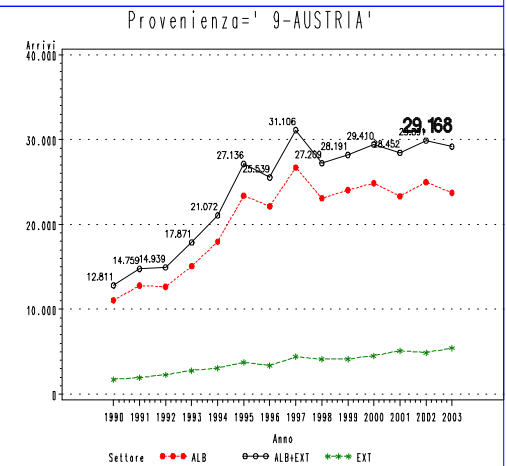
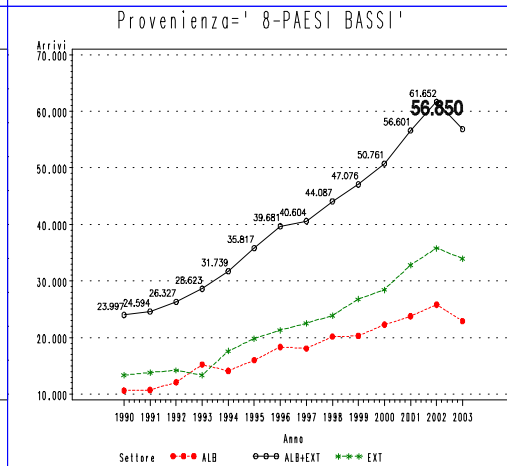
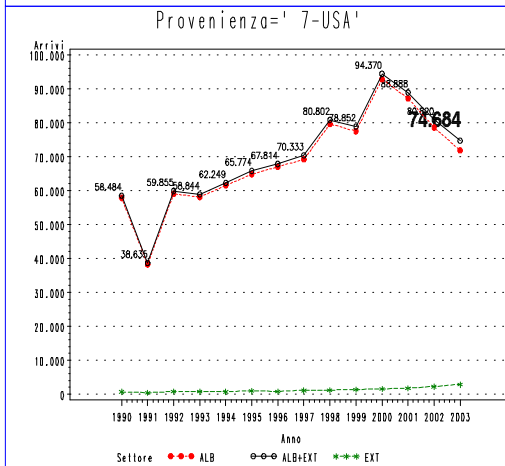
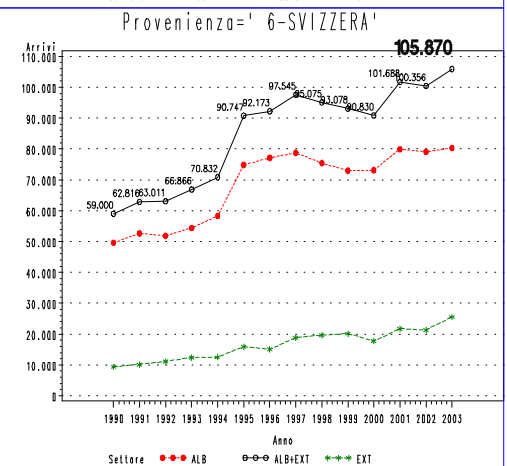
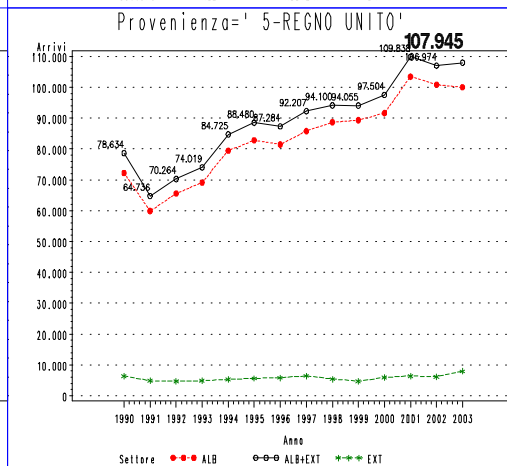
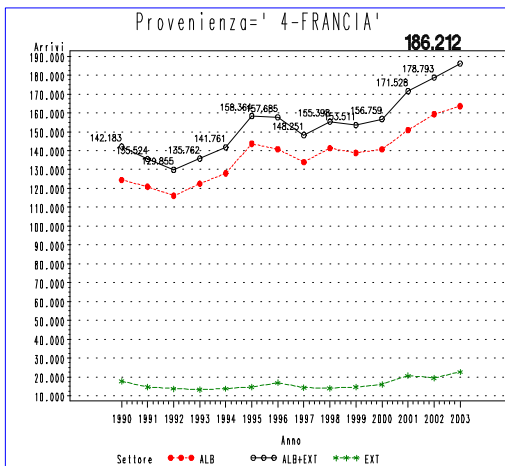
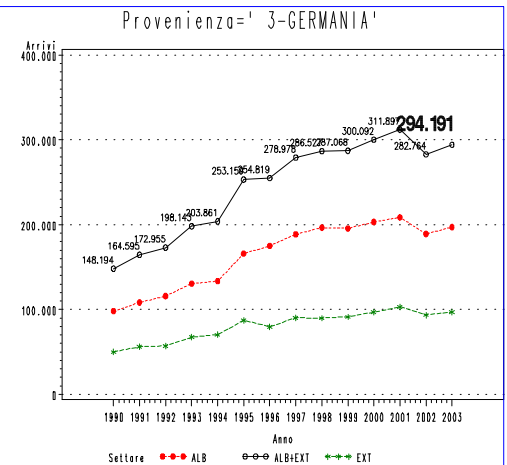
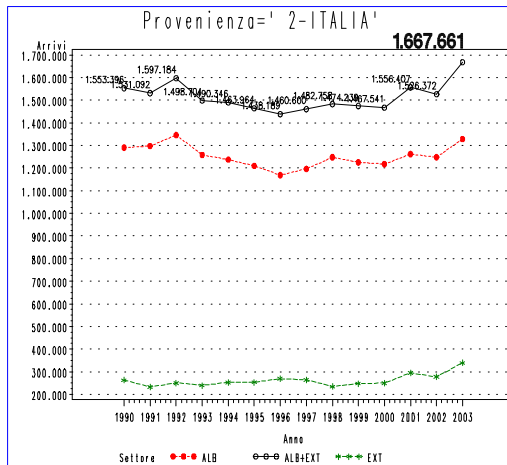
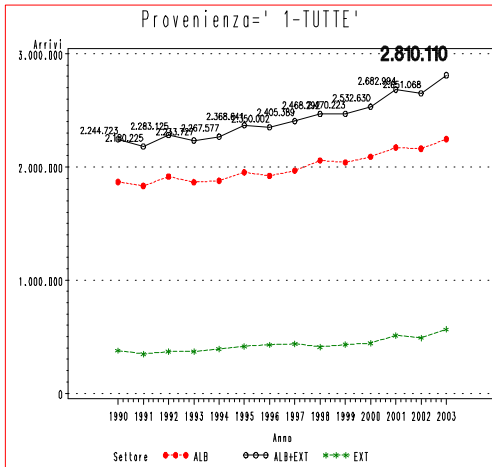
ANNO 2003

Arrivi totali 2003: 2.810.110

Differenza Arrivi rispetto al 2002: + 159.042 (+ 6.00 %)



REGIONE PIEMONTE – Mercati di provenienza – Arrivi



OFFERTA REGIONE PIEMONTE

N. ESERCIZI

N. LETTI

